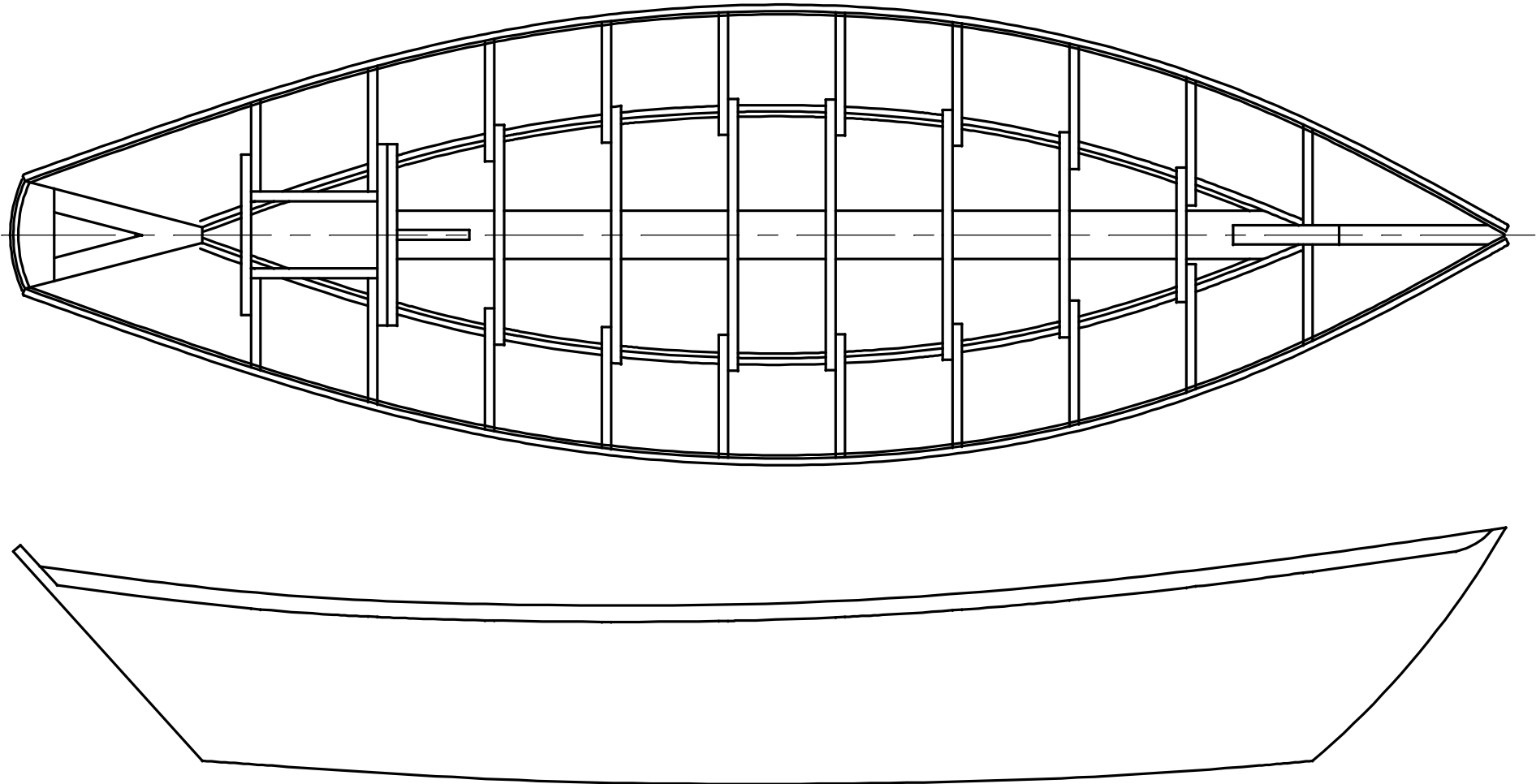


**NOTICE**

THIS DRAWING CONTAINS A PROPRIETARY DESIGN ASSIGNED TO SPIRA INTERNATIONAL, INC. ALL RIGHTS TO DUPLICATE, TRANSFER OR SELL THIS DESIGN ARE EXPRESSLY RESERVED. THE BUYER IS LICENSED TO BUILD ONE ASSEMBLY FROM THESE PLANS.

**REVISIONS**

ZONE	LTR	DESCRIPTION	DATE	APPROVED
	A	UPDATED TO NEW FORMAT	09/03/08	JJS



**GENERAL DIMENSIONS**

LENGTH OVER ALL	19' 0"
LENGTH AT WATERLINE	14' 3"
BEAM	5' 11"
DRAFT	0' 3"
FREEBOARD MAX	3' 0"
FREEBOARD MIN	1' 9"

**Spira International, Inc.**  
Huntington Beach, California

**ALASKAN**  
19' ROW/POWER/SAIL DORY

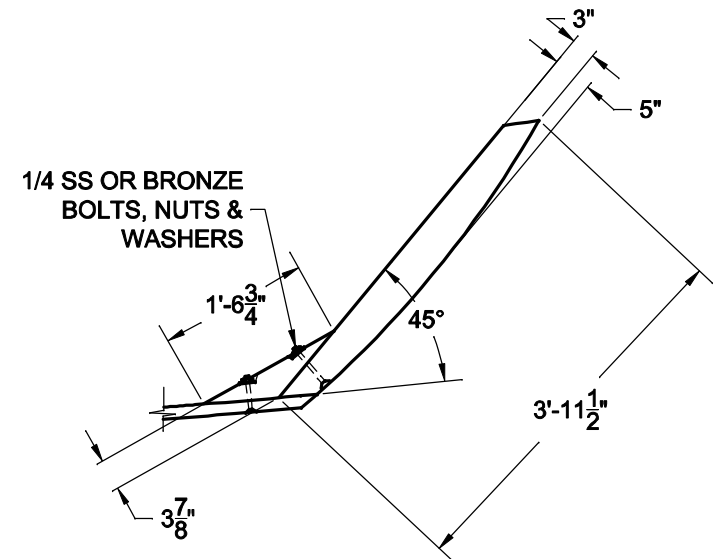
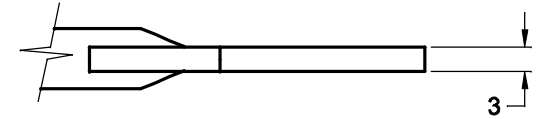
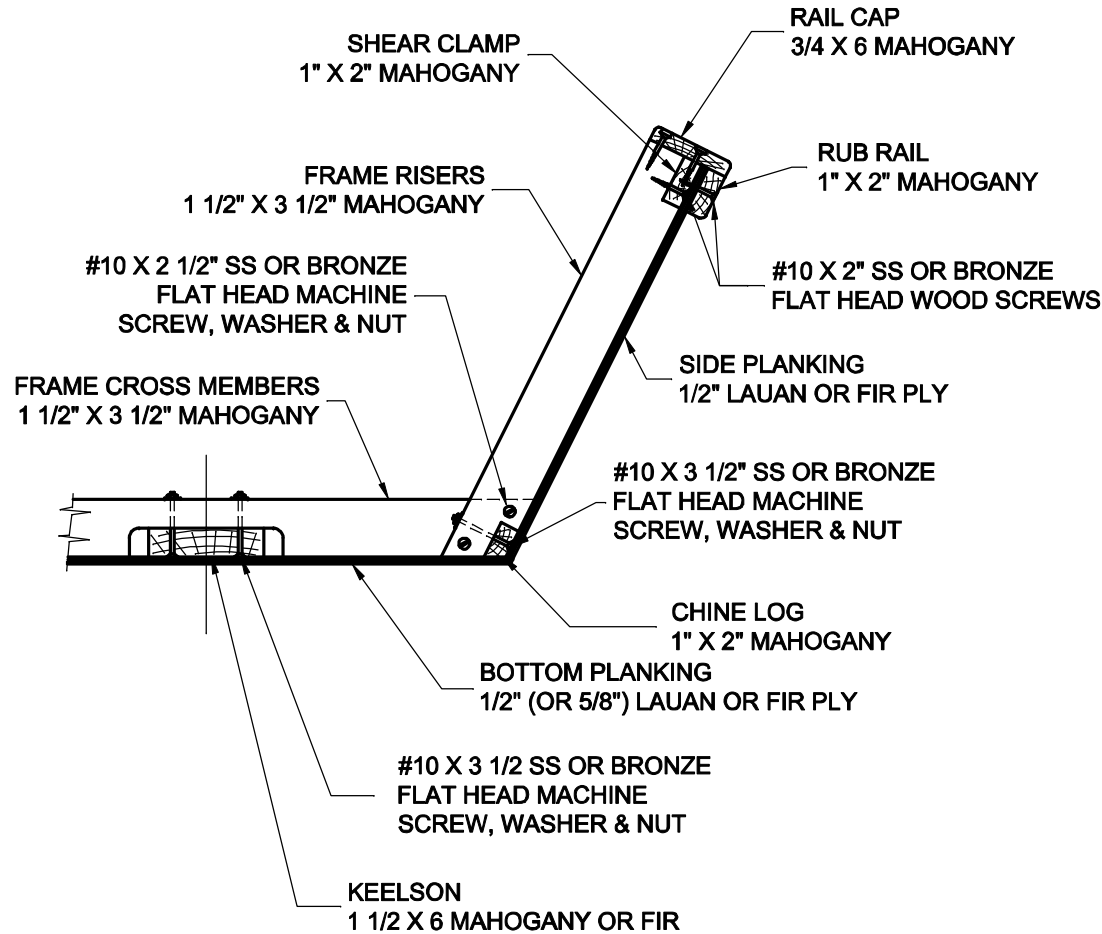
DRAWN BY: J. SPIRA 12/12/98	DATE:	DRAWING NO. ALAS01
SCALE 1" = 1' & NOTED		SHEET OF

**NOTICE**

THIS DRAWING CONTAINS A PROPRIETARY DESIGN ASSIGNED TO SPIRA INTERNATIONAL, INC. ALL RIGHTS TO DUPLICATE, TRANSFER OR SELL THIS DESIGN ARE EXPRESSLY RESERVED. THE BUYER IS LICENSED TO BUILD ONE ASSEMBLY FROM THESE PLANS.

**REVISIONS**

ZONE	LTR	DESCRIPTION	DATE	APPROVED
	A	UPDATED TO NEW FORMAT	09/03/08	JJS



**STEM DETAILS**

**CONSTRUCTION METHOD**

TYPICAL AT EACH FRAME

NOT TO SCALE

**Spira International, Inc.**  
Huntington Beach, California

**ALASKAN**  
CONSTRUCTION DETAILS

DRAWN BY: J. SPIRA	DATE: 12/14/98	DRAWING NO. ALAS03
SCALE 1" = 1' & NOTED		SHEET OF