

4

3

2

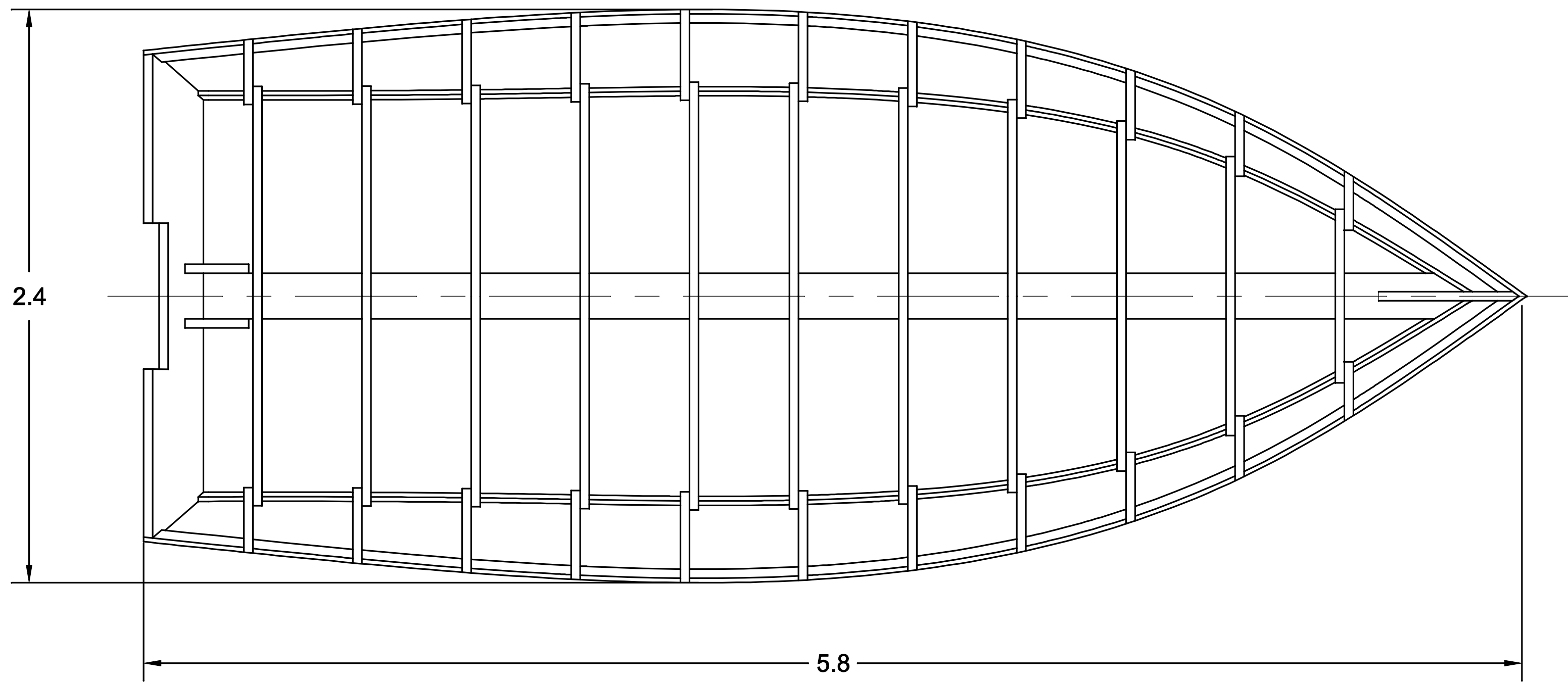
1

NOTICE  
 THIS DRAWING CONTAINS A PROPRIETARY DESIGN ASSIGNED TO SPIRA INTERNATIONAL, INC. ALL RIGHTS TO DUPLICATE, TRANSFER OR SELL THIS DESIGN ARE EXPRESSLY RESERVED. THE BUYER IS LICENSED TO BUILD ONE ASSEMBLY FROM THESE PLANS.

REVISIONS				
ZONE	LTR	DESCRIPTION	DATE	APPROVED

D

D

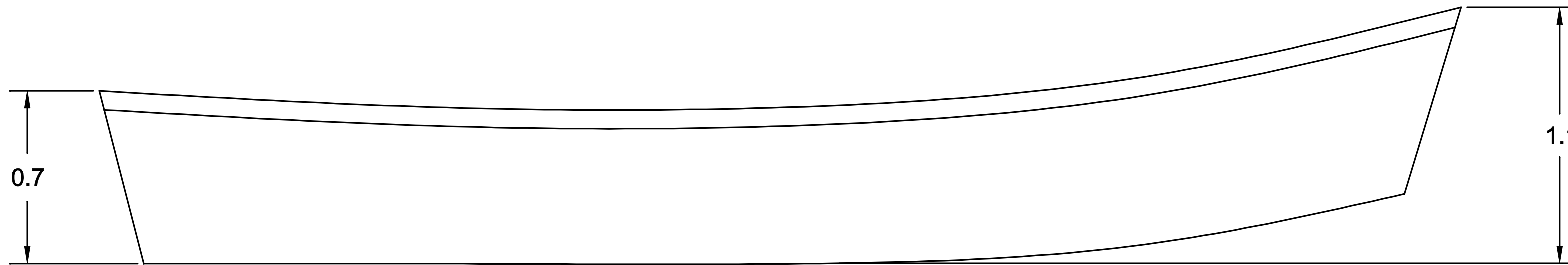


C

C

B

B



A

A

4

3

2

1

**Spira International, Inc.**  
*Huntington Beach, California*

**ALBION**  
**5.8 M PACIFIC POWER DORY**

DRAWN BY: J. SPIRA	DATE: 08/17/10	DRAWING NO. ALBIM01
SCALE 1 / 16		SHEET OF

4

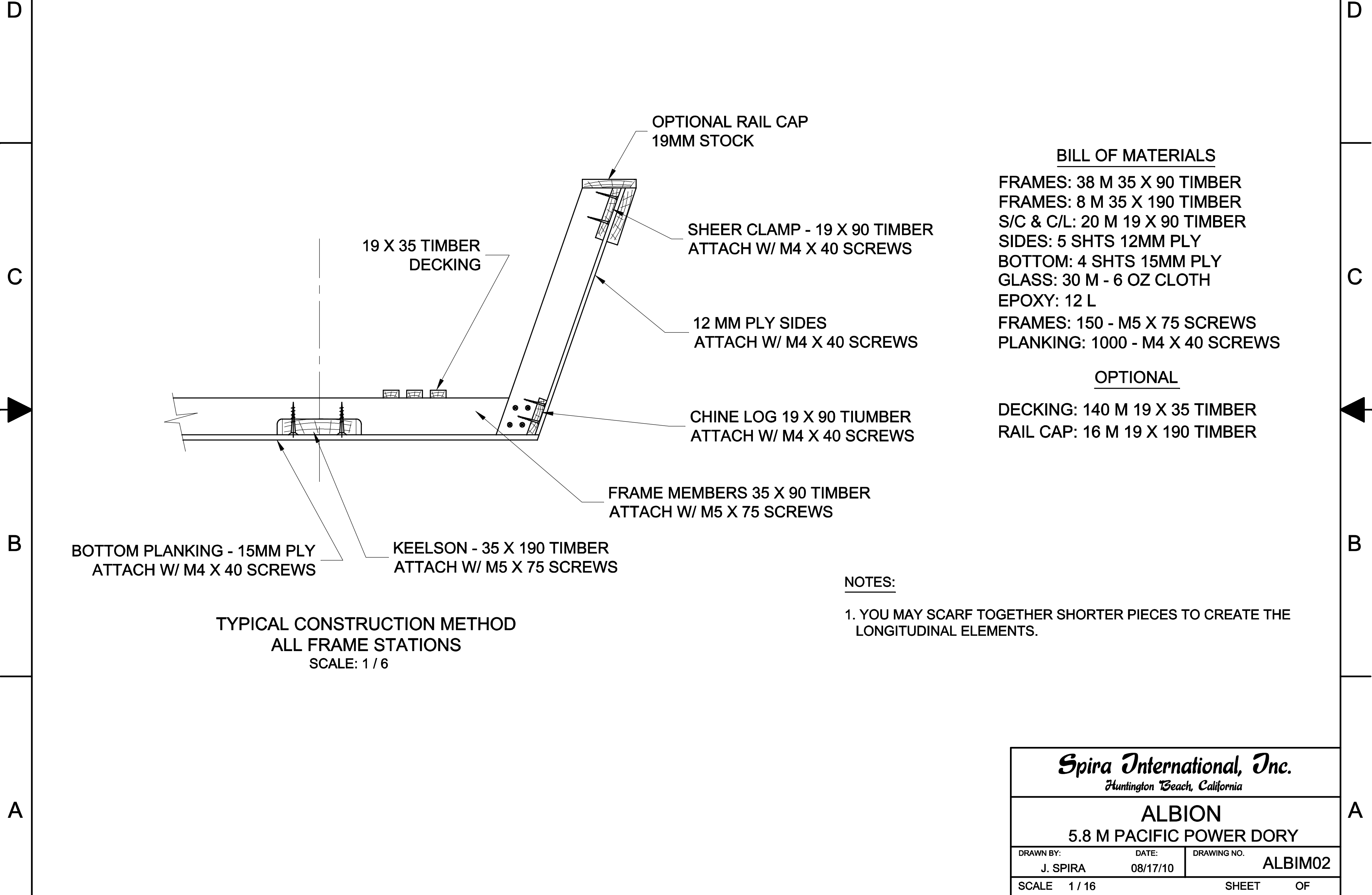
3

2

1

NOTICE  
 THIS DRAWING CONTAINS A PROPRIETARY DESIGN ASSIGNED TO SPIRA INTERNATIONAL, INC. ALL RIGHTS TO DUPLICATE, TRANSFER OR SELL THIS DESIGN ARE EXPRESSLY RESERVED. THE BUYER IS LICENSED TO BUILD ONE ASSEMBLY FROM THESE PLANS.

REVISIONS				
ZONE	LTR	DESCRIPTION	DATE	APPROVED



**BILL OF MATERIALS**

FRAMES: 38 M 35 X 90 TIMBER  
 FRAMES: 8 M 35 X 190 TIMBER  
 S/C & C/L: 20 M 19 X 90 TIMBER  
 SIDES: 5 SHTS 12MM PLY  
 BOTTOM: 4 SHTS 15MM PLY  
 GLASS: 30 M - 6 OZ CLOTH  
 EPOXY: 12 L  
 FRAMES: 150 - M5 X 75 SCREWS  
 PLANKING: 1000 - M4 X 40 SCREWS

**OPTIONAL**

DECKING: 140 M 19 X 35 TIMBER  
 RAIL CAP: 16 M 19 X 190 TIMBER

TYPICAL CONSTRUCTION METHOD  
 ALL FRAME STATIONS  
 SCALE: 1 / 6

**NOTES:**

1. YOU MAY SCARF TOGETHER SHORTER PIECES TO CREATE THE LONGITUDINAL ELEMENTS.

**Spira International, Inc.**  
 Huntington Beach, California

**ALBION**  
 5.8 M PACIFIC POWER DORY

DRAWN BY: J. SPIRA	DATE: 08/17/10	DRAWING NO. ALBIM02
SCALE 1 / 16		SHEET OF

4

3

2

1