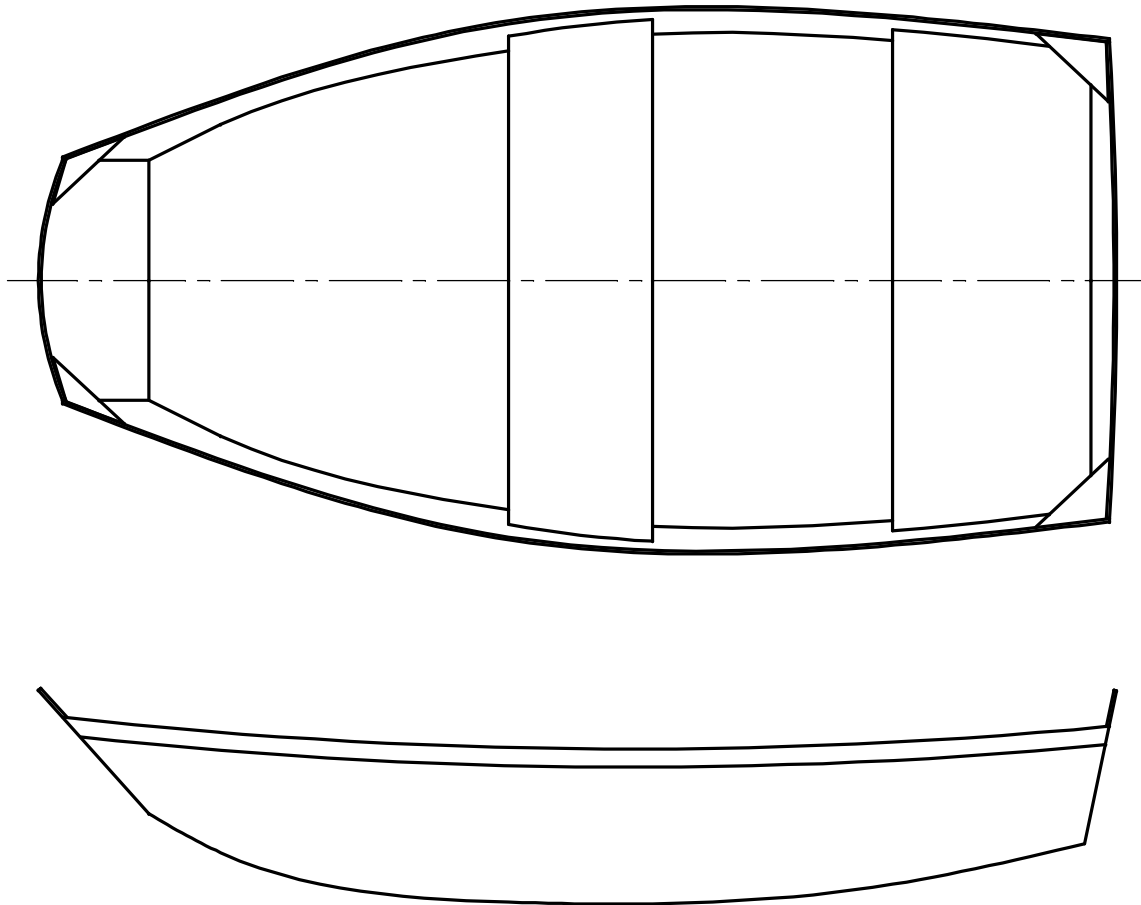


NOTICE

THIS DRAWING CONTAINS A PROPRIETARY DESIGN ASSIGNED TO SPIRA INTERNATIONAL, INC. ALL RIGHTS TO DUPLICATE, TRANSFER OR SELL THIS DESIGN ARE EXPRESSLY RESERVED. THE BUYER IS LICENSED TO BUILD ONE ASSEMBLY FROM THESE PLANS.

REVISIONS

ZONE	LTR	DESCRIPTION	DATE	APPROVED
	A	UPDATED TO NEW FORMAT	09/04/08	JJS



SPECIFICATIONS

LENGTH	7' 6"
BEAM	3' 10"
HEIGHT	1' 6"
DRAFT	0' 3"
WEIGHT	55 LBS

**Spira International, Inc.**  
*Huntington Beach, California*

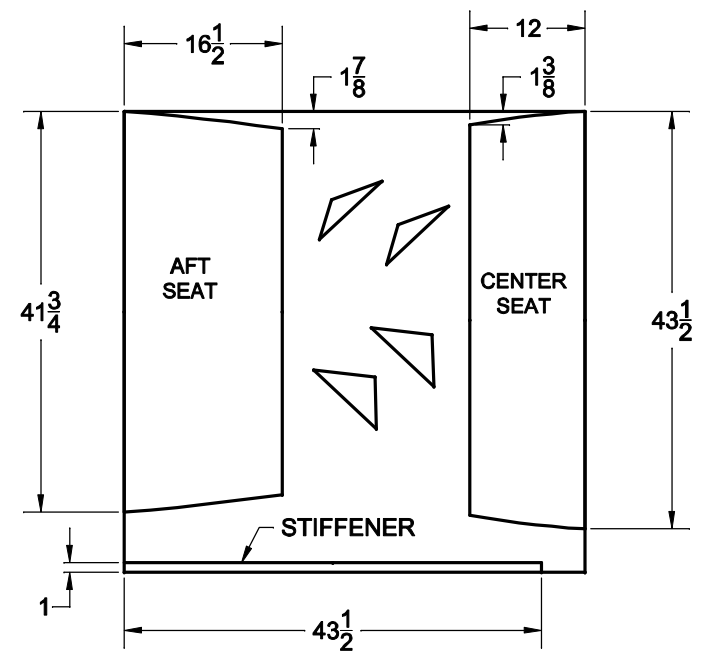
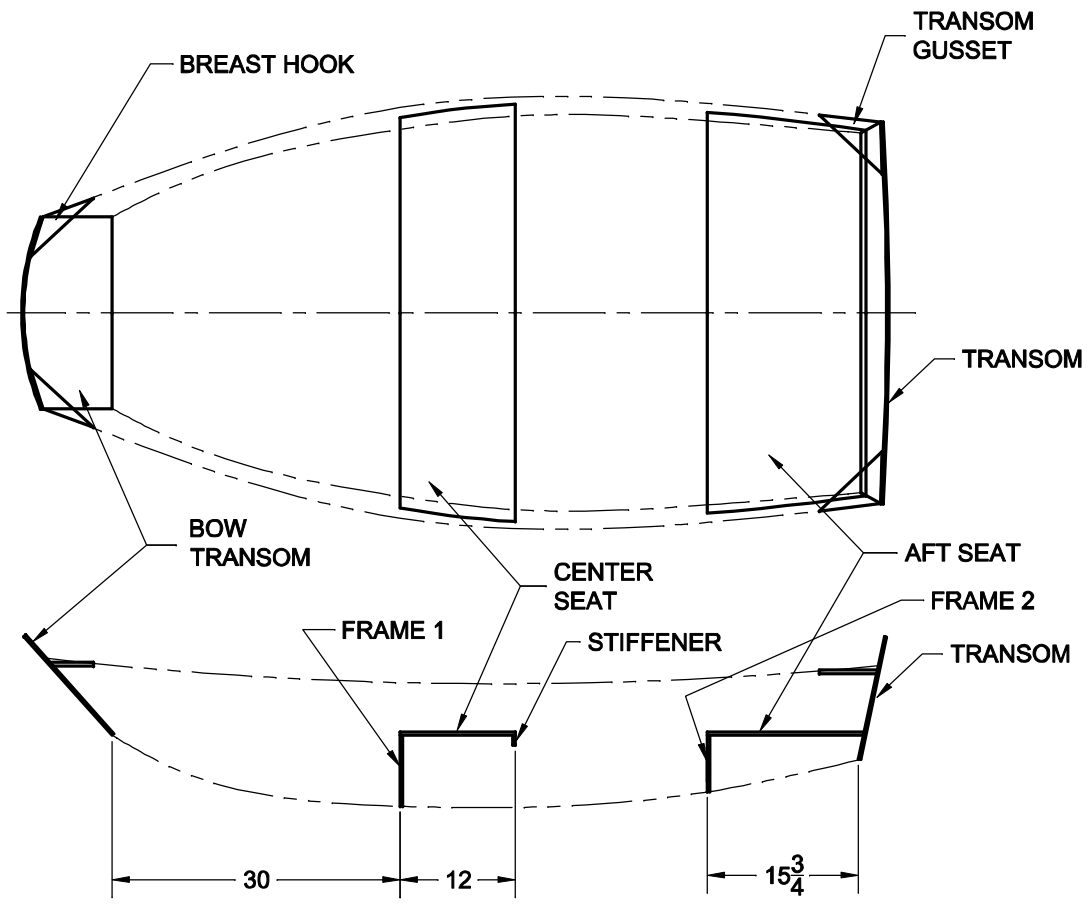
**BACK BAY**  
8' DRIFT PRAM

DRAWN BY: J. SPIRA	DATE: 12/07/00	DRAWING NO. BACK01
-----------------------	-------------------	-----------------------

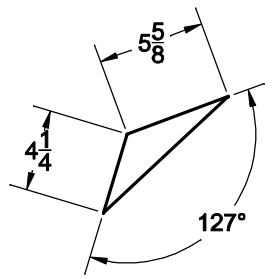
SCALE 1/8 SHEET OF

**NOTICE**  
 THIS DRAWING CONTAINS A PROPRIETARY DESIGN ASSIGNED TO SPIRA INTERNATIONAL, INC. ALL RIGHTS TO DUPLICATE, TRANSFER OR SELL THIS DESIGN ARE EXPRESSLY RESERVED. THE BUYER IS LICENSED TO BUILD ONE ASSEMBLY FROM THESE PLANS.

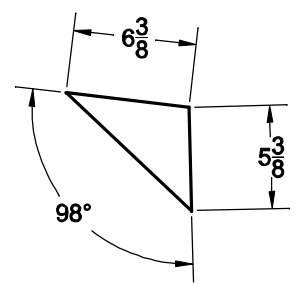
REVISIONS				
ZONE	LTR	DESCRIPTION	DATE	APPROVED
	A	UPDATED TO NEW FORMAT	09/04/08	JJS



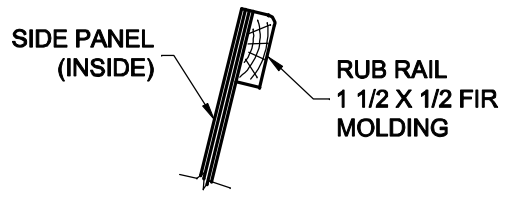
PARTS CUT FROM 3/8 PLY  
 1/2 SHEET (48" X 48") REQ'D



**BREAST HOOK**  
 3/8 PLY - 2 REQ'D  
 SCALE 1/5



**TRANSOM GUSSET**  
 3/8 PLY - 2 REQ'D  
 SCALE 1/5



**RUB RAIL**  
 SCALE 1/2

<b>Spira International, Inc.</b> Huntington Beach, California		
<b>BACK BAY</b> FRAME DETAILS		
DRAWN BY: J. SPIRA	DATE: 12/07/00	DRAWING NO. BACK02
SCALE 1/10 & NOTED		SHEET OF