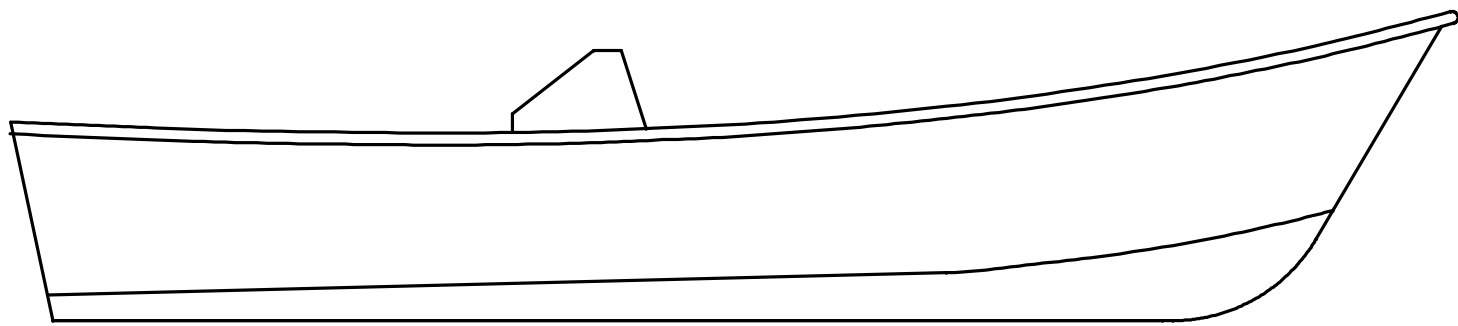
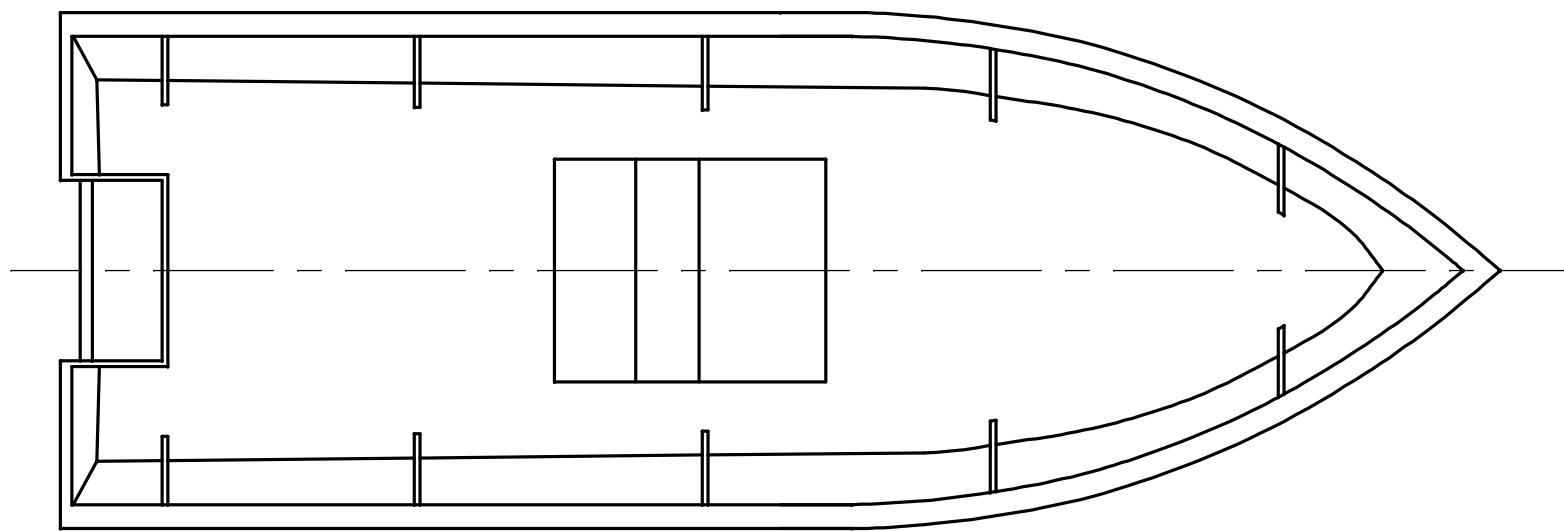


NOTICE
 THIS DRAWING CONTAINS A PROPRIETARY DESIGN ASSIGNED TO SPIRA INTERNATIONAL, INC. ALL RIGHTS TO DUPLICATE, TRANSFER OR SELL THIS DESIGN ARE EXPRESSLY RESERVED. THE BUYER IS LICENSED TO BUILD ONE ASSEMBLY FROM THESE PLANS.

REVISIONS				
ZONE	LTR	DESCRIPTION	DATE	APPROVED
	A	UPDATED TO NEW FORMAT	09/07/08	JJS

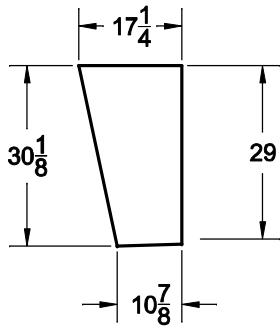


CALIFORNIAN	
LENGTH	20' 0"
BEAM	7' 4"
FREEBOARD	42"

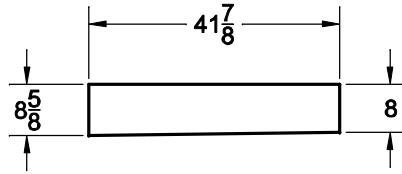
<i>Spira International, Inc.</i> Huntington Beach, California		
CALIFORNIAN VEE BOTTOM FISHING BOAT		
DRAWN BY: J. SPIRA 000301	DATE:	DRAWING NO. CALI01
SCALE 3/4" = 1'	SHEET OF	

NOTICE
 THIS DRAWING CONTAINS A PROPRIETARY DESIGN ASSIGNED TO SPIRA INTERNATIONAL, INC. ALL RIGHTS TO DUPLICATE, TRANSFER OR SELL THIS DESIGN ARE EXPRESSLY RESERVED. THE BUYER IS LICENSED TO BUILD ONE ASSEMBLY FROM THESE PLANS.

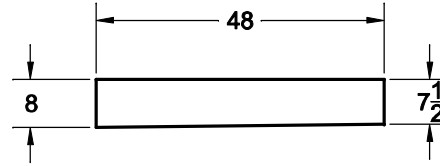
REVISIONS				
ZONE	LTR	DESCRIPTION	DATE	APPROVED
	A	UPDATED TO NEW FORMAT	09/07/08	JJS



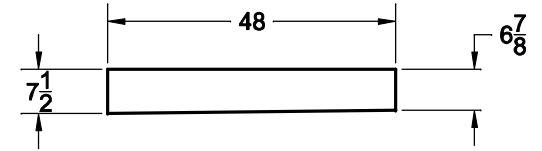
STRINGER 1
 2 REQ'D - 3/4 PLY



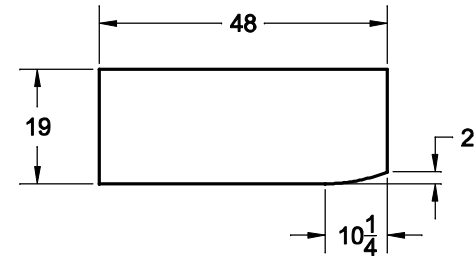
STRINGER 2
 2 REQ'D - 3/4 PLY



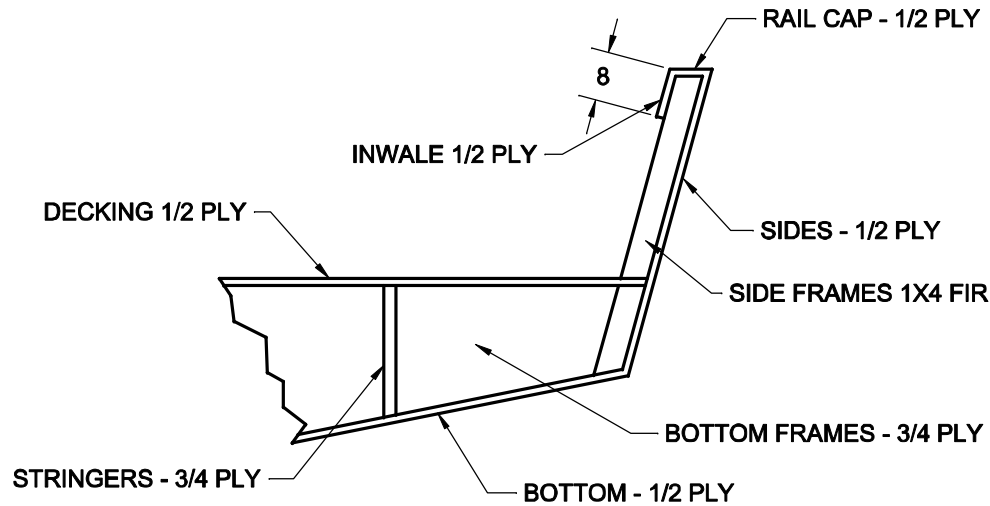
STRINGER 3
 2 REQ'D - 3/4 PLY



STRINGER 4
 2 REQ'D - 3/4 PLY



STRINGER 5
 1 REQ'D - 3/4 PLY



TYPICAL CONSTRUCTION METHOD

Spira International, Inc. Huntington Beach, California		
CALIFORNIAN FRAMING DETAILS		
DRAWN BY: J. SPIRA	DATE: 03/01/00	DRAWING NO. CAL104
SCALE 3/4" = 1'		SHEET OF