

4

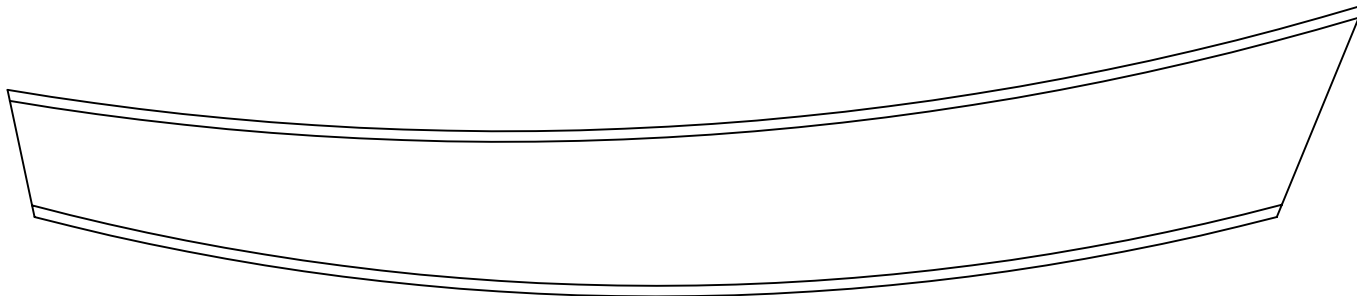
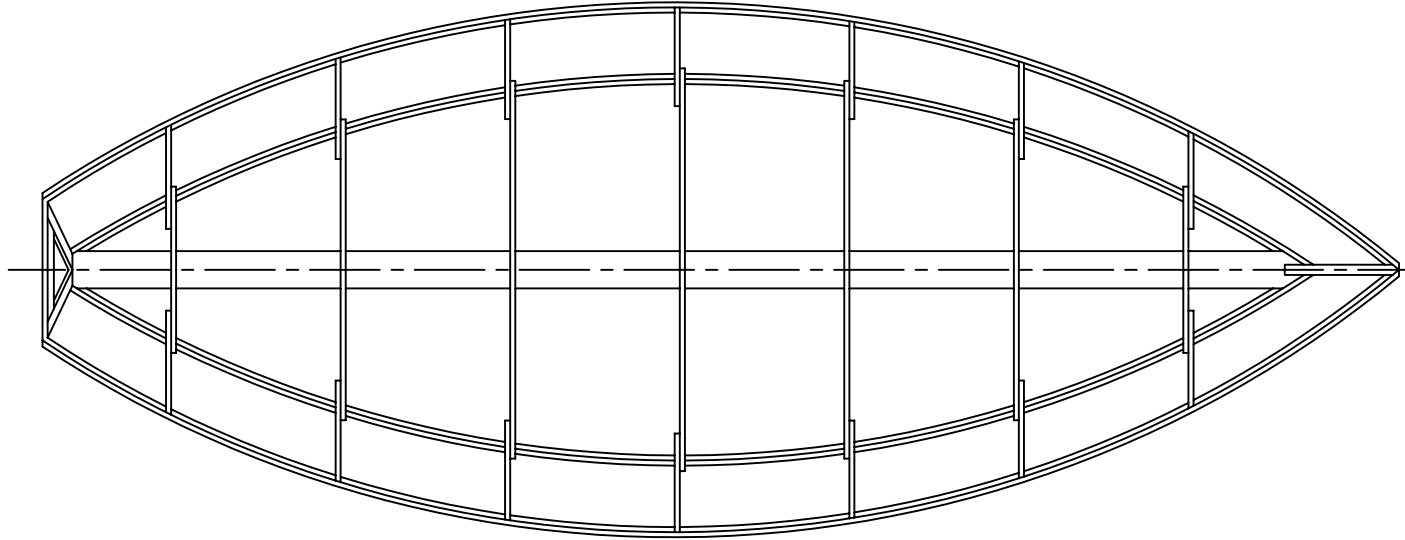
3

2

1

NOTICE
 THIS DRAWING CONTAINS A PROPRIETARY DESIGN ASSIGNED TO SPIRA INTERNATIONAL, INC. ALL RIGHTS TO DUPLICATE, TRANSFER OR SELL THIS DESIGN ARE EXPRESSLY RESERVED. THE BUYER IS LICENSED TO BUILD ONE ASSEMBLY FROM THESE PLANS.

REVISIONS				
ZONE	LTR	DESCRIPTION	DATE YR/MO/DA	APPROVED
	A	CORRECTED BEAM ERROR	02/20/04	JJS



SPECIFICATIONS	
LENGTH	14' 0"
BEAM	5' 9"
HEIGHT	2' 6"
DRAFT	0' 4"
WEIGHT	150 LBS

Spira International, Inc.
 Huntington Beach, California

CANADIAN
 14' DRIFT BOAT

DRAWN BY: J. SPIRA	DATE: 09/04/01	DRAWING NO. CANA01
SCALE 1" = 1'		SHEET OF

4

3

2

1

4

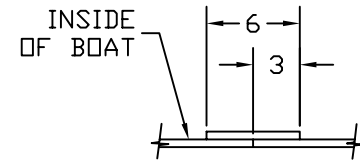
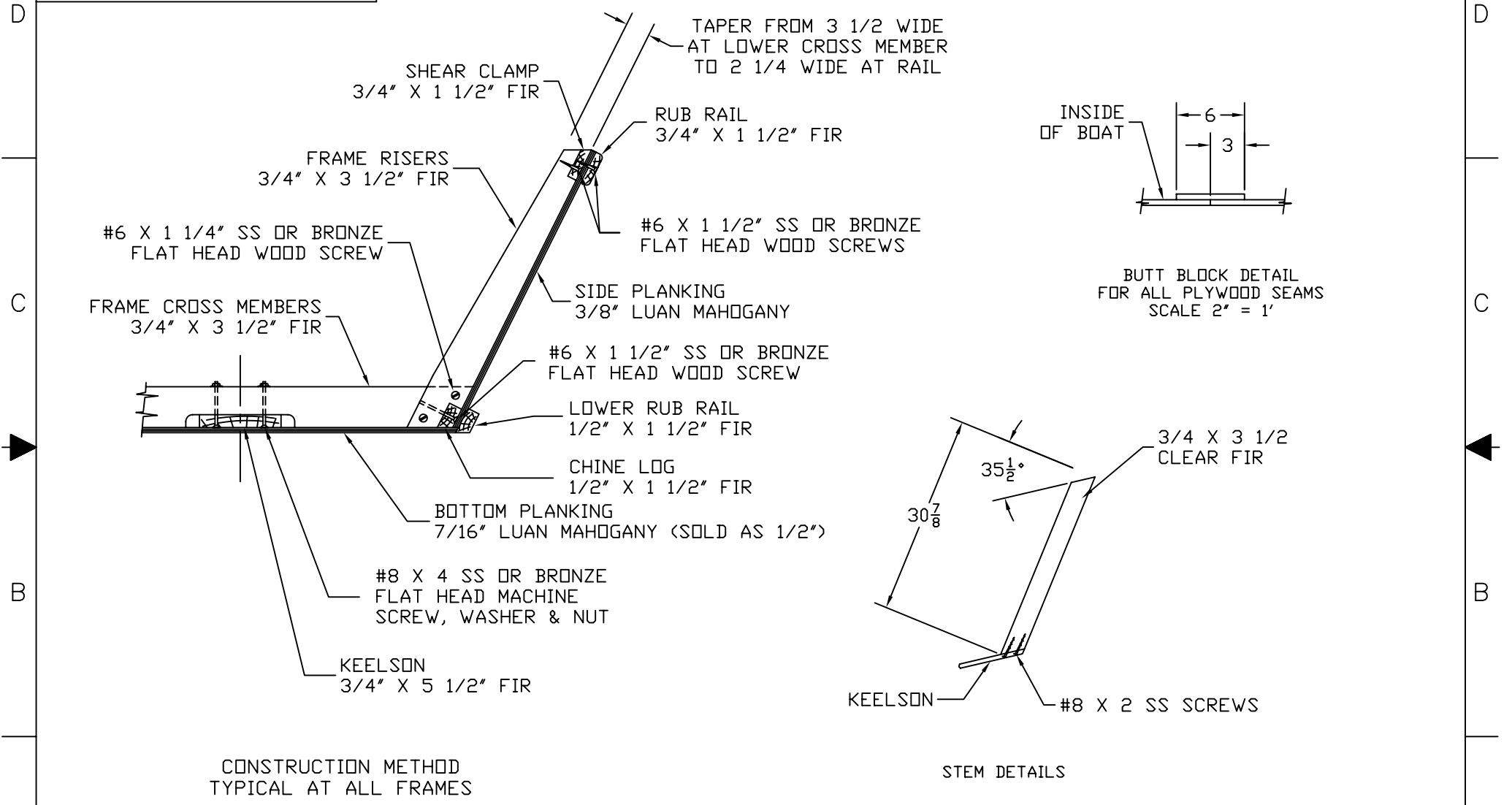
3

2

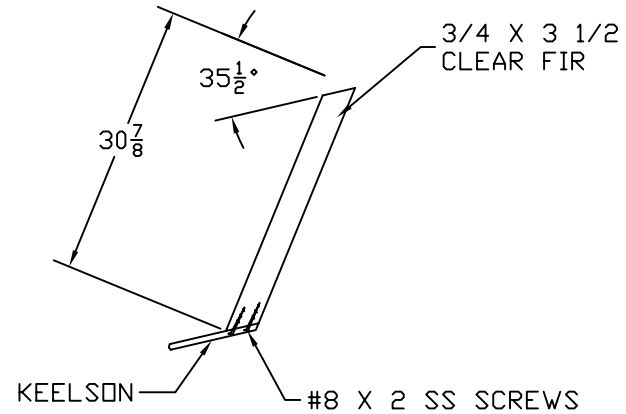
1

NOTICE
 THIS DRAWING CONTAINS A PROPRIETARY DESIGN ASSIGNED TO SPIRA INTERNATIONAL, INC. ALL RIGHTS TO DUPLICATE, TRANSFER OR SELL THIS DESIGN ARE EXPRESSLY RESERVED. THE BUYER IS LICENSED TO BUILD ONE ASSEMBLY FROM THESE PLANS.

REVISIONS				
ZONE	LTR	DESCRIPTION	DATE YR/MO/DA	APPROVED



BUTT BLOCK DETAIL
 FOR ALL PLYWOOD SEAMS
 SCALE 2" = 1"



STEM DETAILS

CONSTRUCTION METHOD
 TYPICAL AT ALL FRAMES

Spira International, Inc.
 Huntington Beach, California

CANADIAN
 CONSTRUCTION DETAILS

DRAWN BY: J. SPIRA	DATE: 09/05/00	DRAWING NO. CANA04
SCALE 1" = 1' & NOTED		SHEET OF

4

3

2

1