

4

3

2

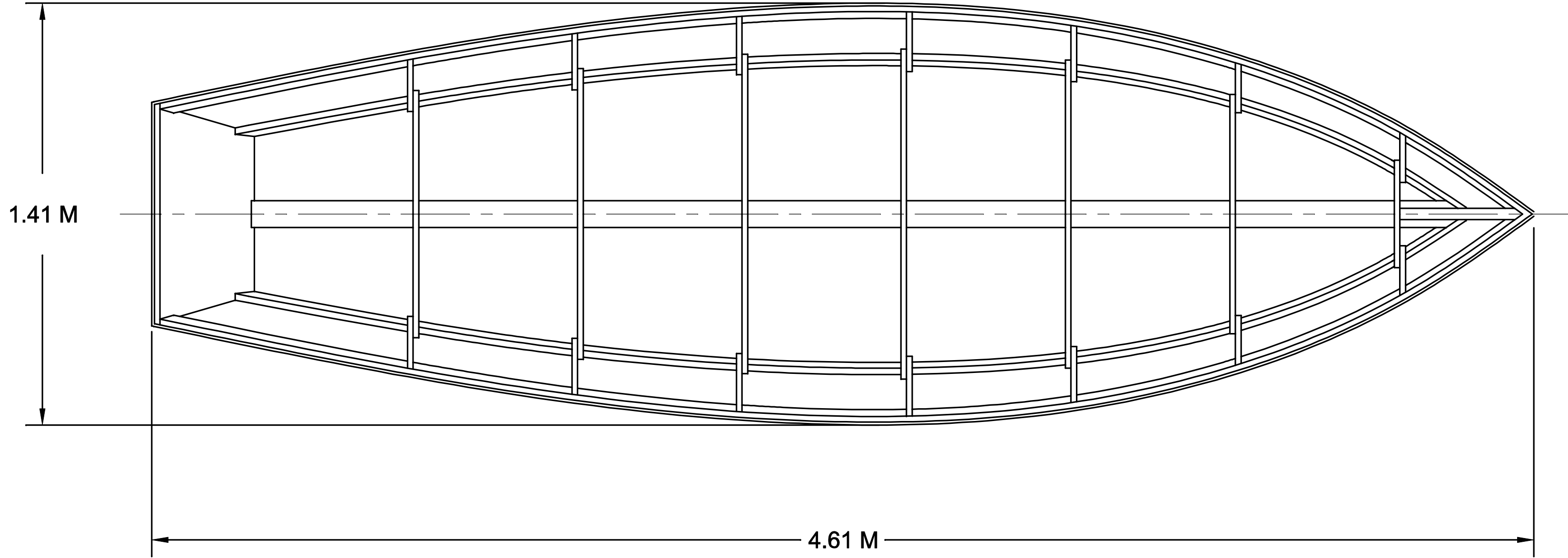
1

NOTICE
 THIS DRAWING CONTAINS A PROPRIETARY DESIGN ASSIGNED TO SPIRA INTERNATIONAL, INC. ALL RIGHTS TO DUPLICATE, TRANSFER OR SELL THIS DESIGN ARE EXPRESSLY RESERVED. THE BUYER IS LICENSED TO BUILD ONE ASSEMBLY FROM THESE PLANS.

REVISIONS				
ZONE	LTR	DESCRIPTION	DATE	APPROVED

D

D



C

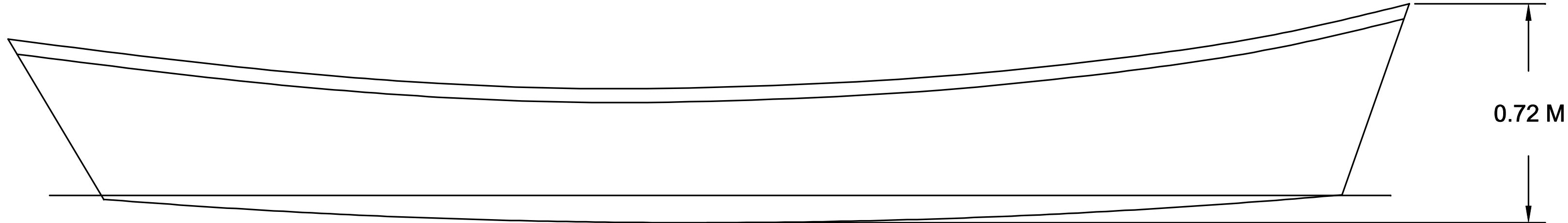
C

B

B

B

B



A

A

Spira International, Inc.
Huntington Beach, California

CAPE COD
 4.6 M ROWING SKIFF

DRAWN BY: J. SPIRA	DATE: 08/20/10	DRAWING NO. CAPEM01
SCALE 1 / 12 & NOTED		SHEET OF

4

3

2

1

4

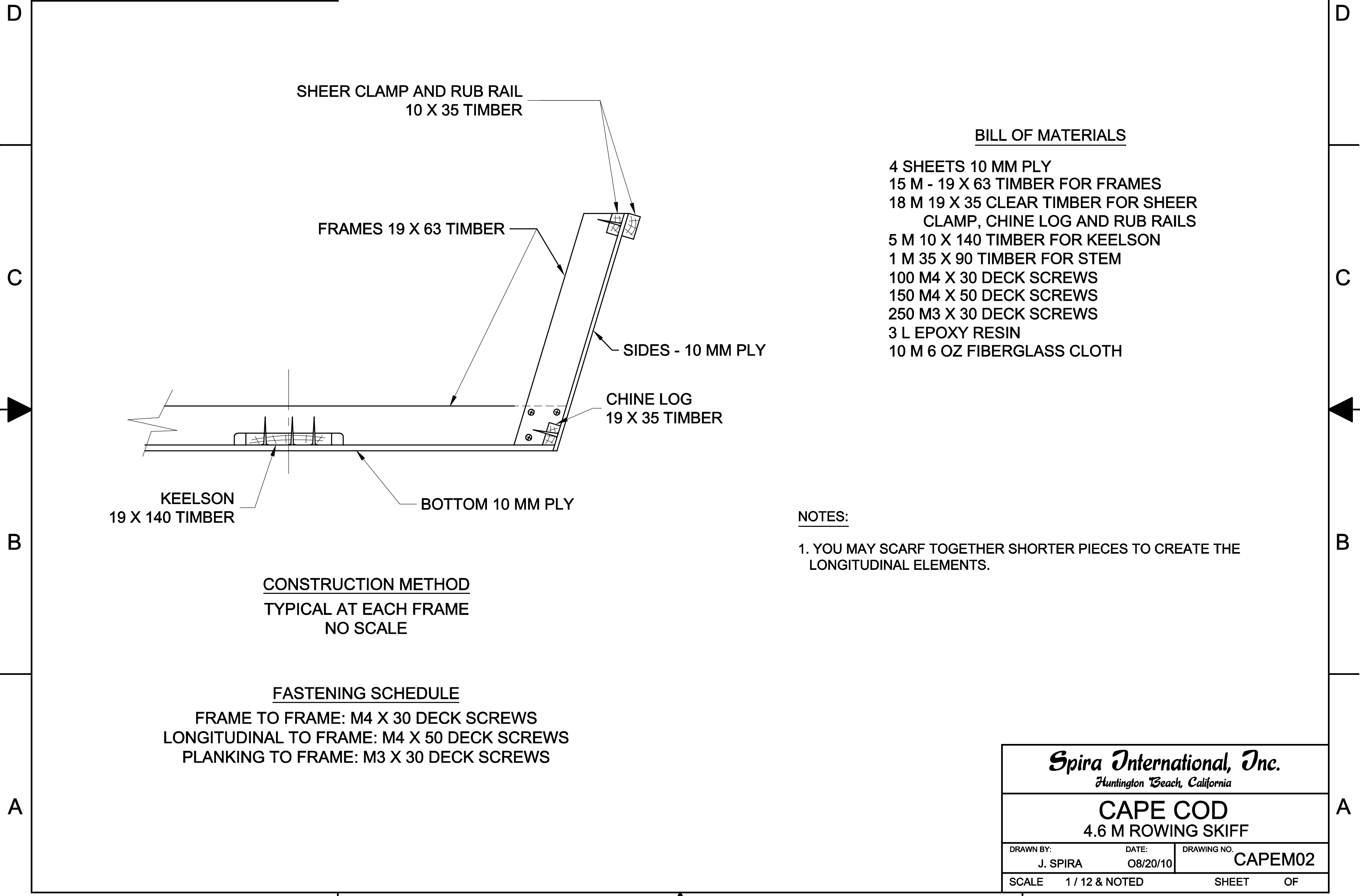
3

2

1

NOTICE
 THIS DRAWING CONTAINS A PROPRIETARY DESIGN ASSIGNED TO SPIRA INTERNATIONAL, INC. ALL RIGHTS TO DUPLICATE, TRANSFER OR SELL THIS DESIGN ARE EXPRESSLY RESERVED. THE BUYER IS LICENSED TO BUILD ONE ASSEMBLY FROM THESE PLANS.

REVISIONS				
ZONE	LTR	DESCRIPTION	DATE	APPROVED



SHEER CLAMP AND RUB RAIL
 10 X 35 TIMBER

FRAMES 19 X 63 TIMBER

SIDES - 10 MM PLY

CHINE LOG
 19 X 35 TIMBER

KEELSON
 19 X 140 TIMBER

BOTTOM 10 MM PLY

BILL OF MATERIALS

- 4 SHEETS 10 MM PLY
- 15 M - 19 X 63 TIMBER FOR FRAMES
- 18 M 19 X 35 CLEAR TIMBER FOR SHEER CLAMP, CHINE LOG AND RUB RAILS
- 5 M 10 X 140 TIMBER FOR KEELSON
- 1 M 35 X 90 TIMBER FOR STEM
- 100 M4 X 30 DECK SCREWS
- 150 M4 X 50 DECK SCREWS
- 250 M3 X 30 DECK SCREWS
- 3 L EPOXY RESIN
- 10 M 6 OZ FIBERGLASS CLOTH

NOTES:

1. YOU MAY SCARF TOGETHER SHORTER PIECES TO CREATE THE LONGITUDINAL ELEMENTS.

CONSTRUCTION METHOD
 TYPICAL AT EACH FRAME
 NO SCALE

FASTENING SCHEDULE
 FRAME TO FRAME: M4 X 30 DECK SCREWS
 LONGITUDINAL TO FRAME: M4 X 50 DECK SCREWS
 PLANKING TO FRAME: M3 X 30 DECK SCREWS

Spira International, Inc.
Huntington Beach, California

CAPE COD
 4.6 M ROWING SKIFF

DRAWN BY: J. SPIRA	DATE: 08/20/10	DRAWING NO. CAPEM02
SCALE 1 / 12 & NOTED	SHEET OF	

4

3

2

1