

4

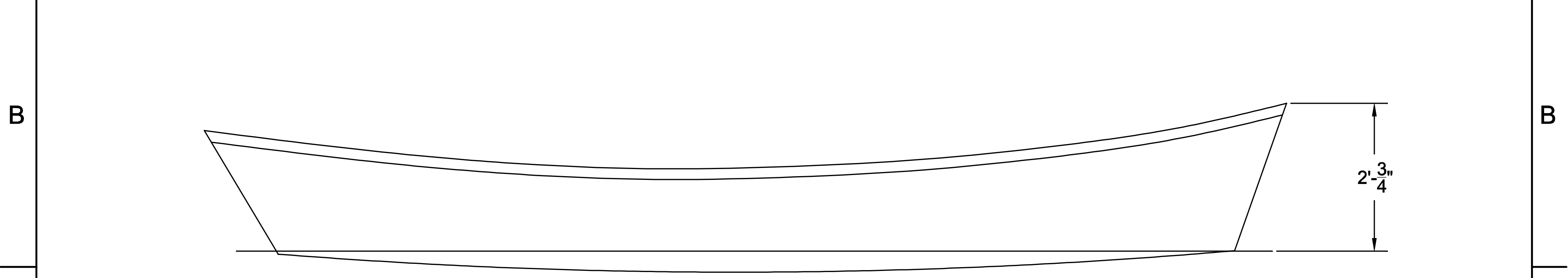
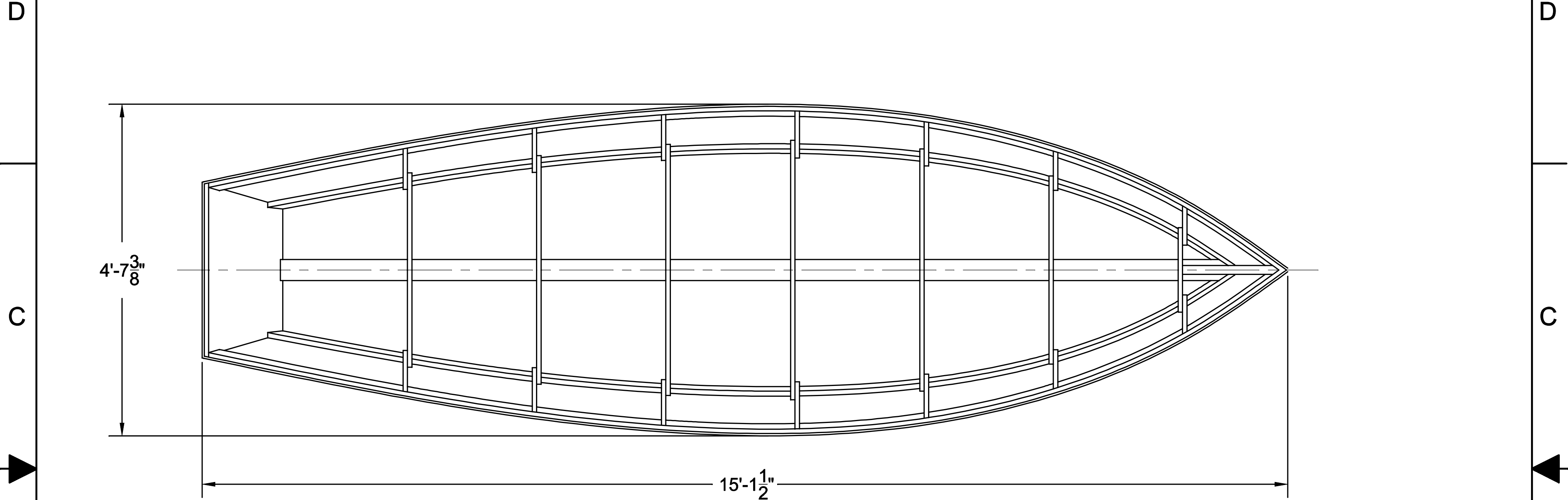
3

2

1

NOTICE  
 THIS DRAWING CONTAINS A PROPRIETARY DESIGN ASSIGNED TO SPIRA INTERNATIONAL, INC. ALL RIGHTS TO DUPLICATE, TRANSFER OR SELL THIS DESIGN ARE EXPRESSLY RESERVED. THE BUYER IS LICENSED TO BUILD ONE ASSEMBLY FROM THESE PLANS.

| REVISIONS |     |             |      |          |
|-----------|-----|-------------|------|----------|
| ZONE      | LTR | DESCRIPTION | DATE | APPROVED |
|           |     |             |      |          |



**Spira International, Inc.**  
*Huntington Beach, California*

**CAPE COD**  
 15' ROWING SKIFF

|                       |                   |                       |
|-----------------------|-------------------|-----------------------|
| DRAWN BY:<br>J. SPIRA | DATE:<br>08/01/10 | DRAWING NO.<br>CAPE01 |
| SCALE 1" = 1' & NOTED |                   | SHEET OF              |

4

3

2

1

4

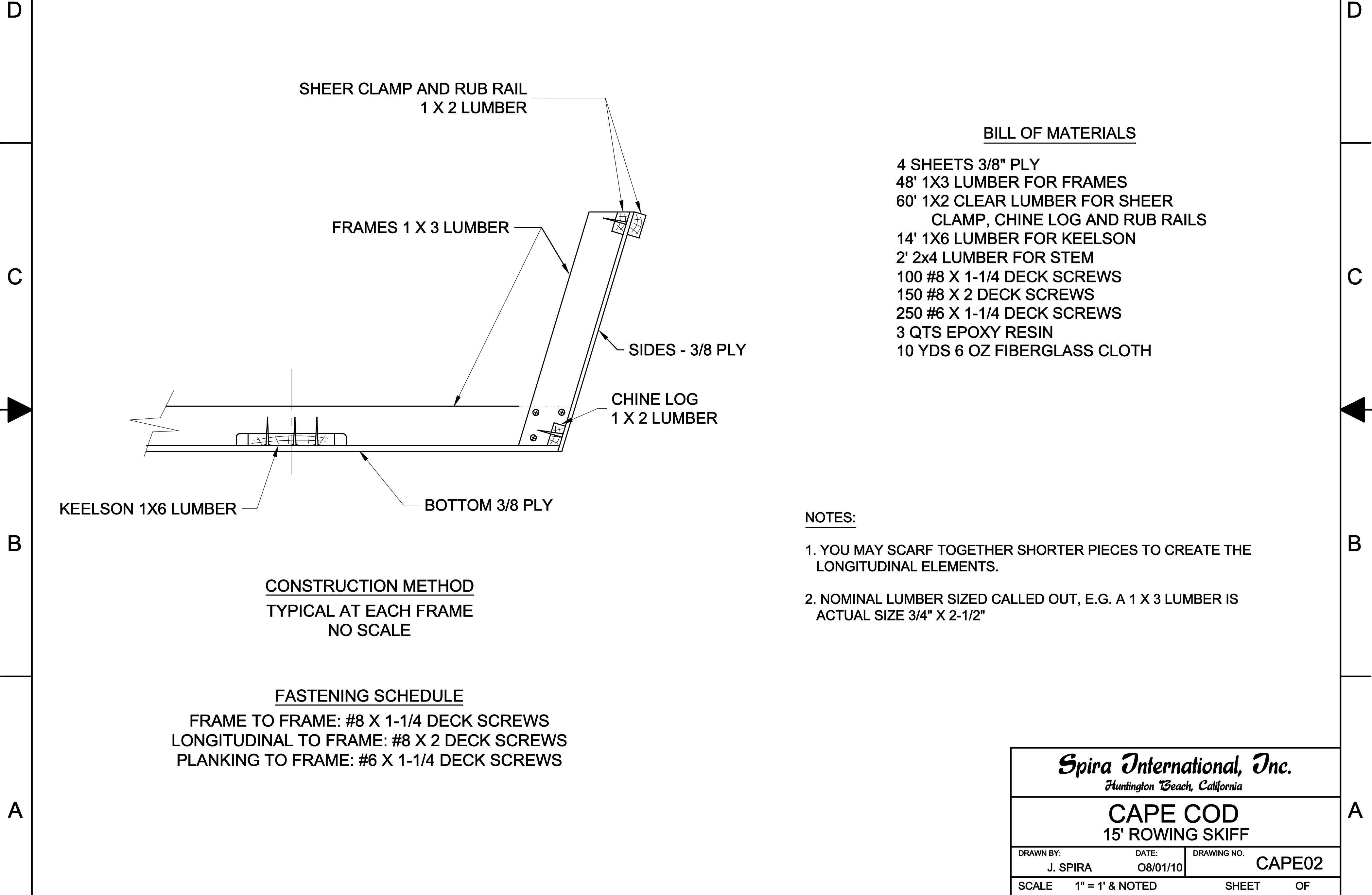
3

2

1

NOTICE  
 THIS DRAWING CONTAINS A PROPRIETARY DESIGN ASSIGNED TO SPIRA INTERNATIONAL, INC. ALL RIGHTS TO DUPLICATE, TRANSFER OR SELL THIS DESIGN ARE EXPRESSLY RESERVED. THE BUYER IS LICENSED TO BUILD ONE ASSEMBLY FROM THESE PLANS.

| REVISIONS |     |             |      |          |
|-----------|-----|-------------|------|----------|
| ZONE      | LTR | DESCRIPTION | DATE | APPROVED |
|           |     |             |      |          |



BILL OF MATERIALS

- 4 SHEETS 3/8" PLY
- 48' 1X3 LUMBER FOR FRAMES
- 60' 1X2 CLEAR LUMBER FOR SHEER CLAMP, CHINE LOG AND RUB RAILS
- 14' 1X6 LUMBER FOR KEELSON
- 2' 2x4 LUMBER FOR STEM
- 100 #8 X 1-1/4 DECK SCREWS
- 150 #8 X 2 DECK SCREWS
- 250 #6 X 1-1/4 DECK SCREWS
- 3 QTS EPOXY RESIN
- 10 YDS 6 OZ FIBERGLASS CLOTH

NOTES:

1. YOU MAY SCARF TOGETHER SHORTER PIECES TO CREATE THE LONGITUDINAL ELEMENTS.
2. NOMINAL LUMBER SIZED CALLED OUT, E.G. A 1 X 3 LUMBER IS ACTUAL SIZE 3/4" X 2-1/2"

CONSTRUCTION METHOD

TYPICAL AT EACH FRAME  
 NO SCALE

FASTENING SCHEDULE

FRAME TO FRAME: #8 X 1-1/4 DECK SCREWS  
 LONGITUDINAL TO FRAME: #8 X 2 DECK SCREWS  
 PLANKING TO FRAME: #6 X 1-1/4 DECK SCREWS

*Spira International, Inc.*  
 Huntington Beach, California

**CAPE COD**  
 15' ROWING SKIFF

|                       |                   |                       |
|-----------------------|-------------------|-----------------------|
| DRAWN BY:<br>J. SPIRA | DATE:<br>08/01/10 | DRAWING NO.<br>CAPE02 |
| SCALE 1" = 1' & NOTED | SHEET OF          |                       |

4

3

2

1