

4

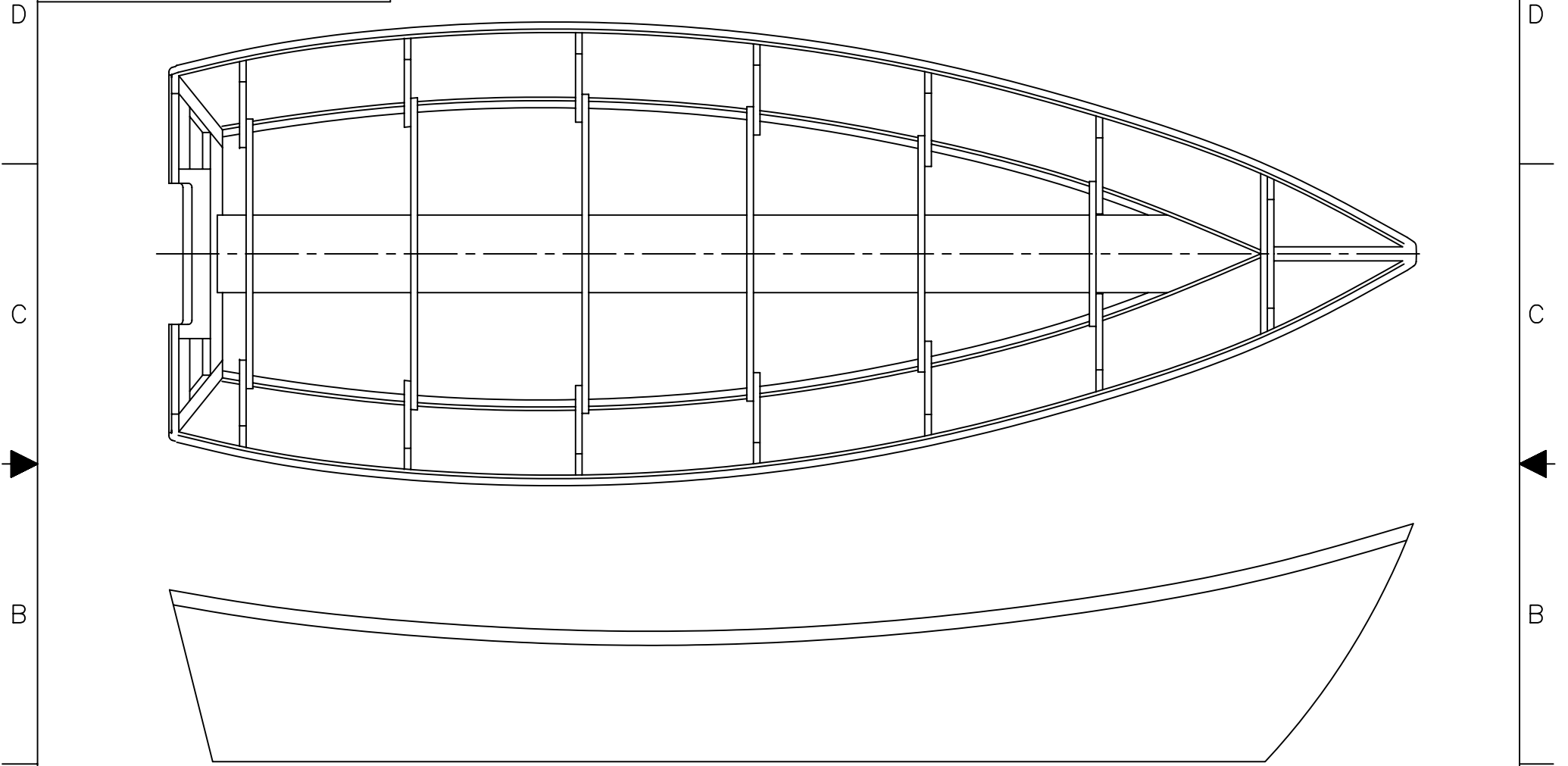
3

2

1

NOTICE  
 THIS DRAWING CONTAINS A PROPRIETARY DESIGN ASSIGNED TO SPIRA INTERNATIONAL, INC. ALL RIGHTS TO DUPLICATE, TRANSFER OR SELL THIS DESIGN ARE EXPRESSLY RESERVED. THE BUYER IS LICENSED TO BUILD ONE ASSEMBLY FROM THESE PLANS.

REVISIONS				
ZONE	LTR	DESCRIPTION	DATE YR/MO/DA	APPROVED



SPECIFICATIONS	
LENGTH	18' 1"
BEAM	6' 4"
HEIGHT	2' 10"
DRAFT	0' 3"
WEIGHT	325 LBS

*Spira International, Inc.*  
 Huntington Beach, California

CAROLINIAN  
 18' CAROLINA DORY

DRAWN BY: J. SPIRA	DATE: 07/05/00	DRAWING NO. CARD01
SCALE 1" = 1'		SHEET OF

4

3

2

1

A

A

4

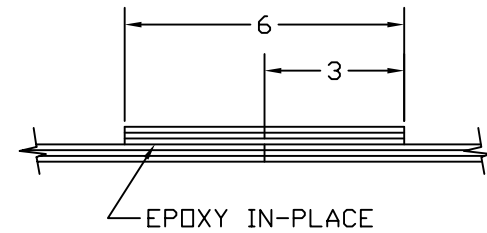
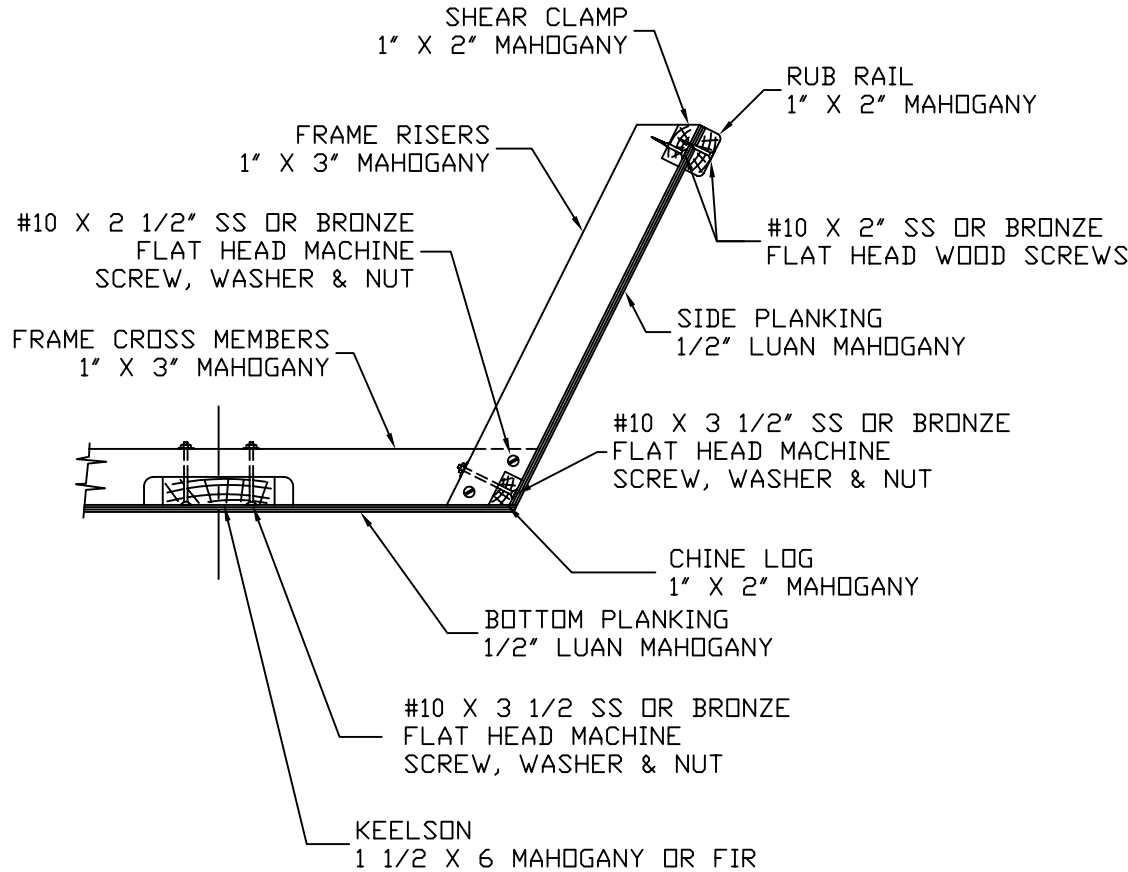
3

2

1

NOTICE  
 THIS DRAWING CONTAINS A PROPRIETARY DESIGN ASSIGNED TO SPIRA INTERNATIONAL, INC. ALL RIGHTS TO DUPLICATE, TRANSFER OR SELL THIS DESIGN ARE EXPRESSLY RESERVED. THE BUYER IS LICENSED TO BUILD ONE ASSEMBLY FROM THESE PLANS.

REVISIONS				
ZONE	LTR	DESCRIPTION	DATE YR/MO/DA	APPROVED



BUTT BLOCKS REQUIRED AT ALL PLYWOOD SEAMS (BLOCK ON INSIDE OF HULL)

CONSTRUCTION METHOD TYPICAL AT EACH FRAME

*Spira International, Inc.*  
 Huntington Beach, California

CAROLINIAN  
 18' CAROLINA DORY

DRAWN BY: J. SPIRA	DATE: 07/06/00	DRAWING NO. CARD03
SCALE 1/5 & NOTED		SHEET OF

4

3

2

1