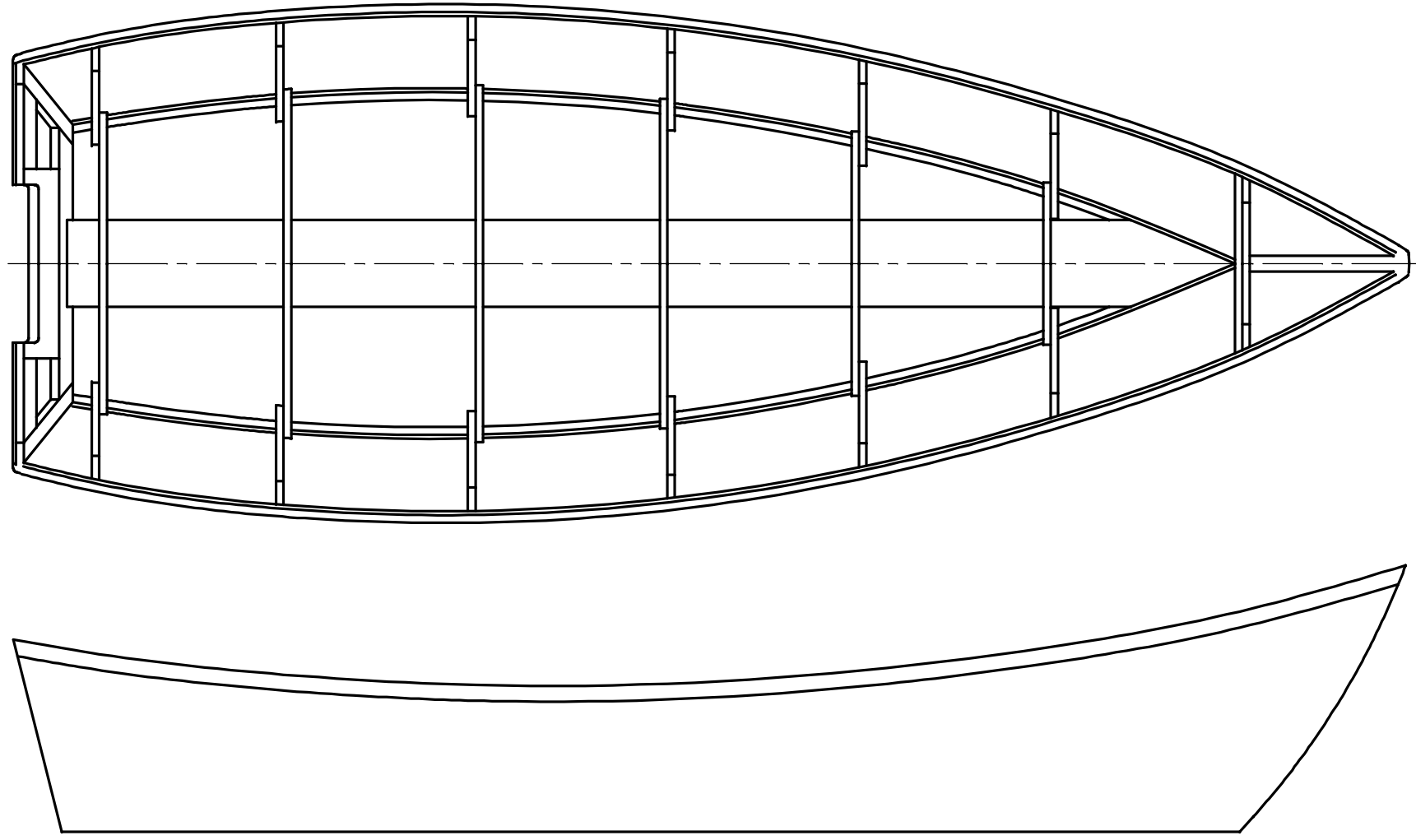


NOTICE
 THIS DRAWING CONTAINS A PROPRIETARY DESIGN ASSIGNED TO SPIRA INTERNATIONAL, INC. ALL RIGHTS TO DUPLICATE, TRANSFER OR SELL THIS DESIGN ARE EXPRESSLY RESERVED. THE BUYER IS LICENSED TO BUILD ONE ASSEMBLY FROM THESE PLANS.

REVISIONS				
ZONE	LTR	DESCRIPTION	DATE	APPROVED
	A	UPDATED TO NEW FORMAT	9/11/08	JJS

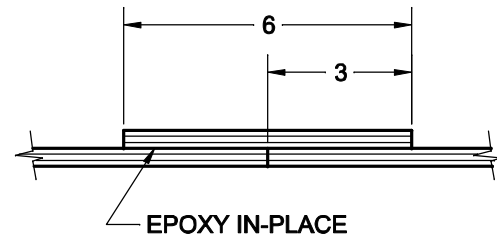
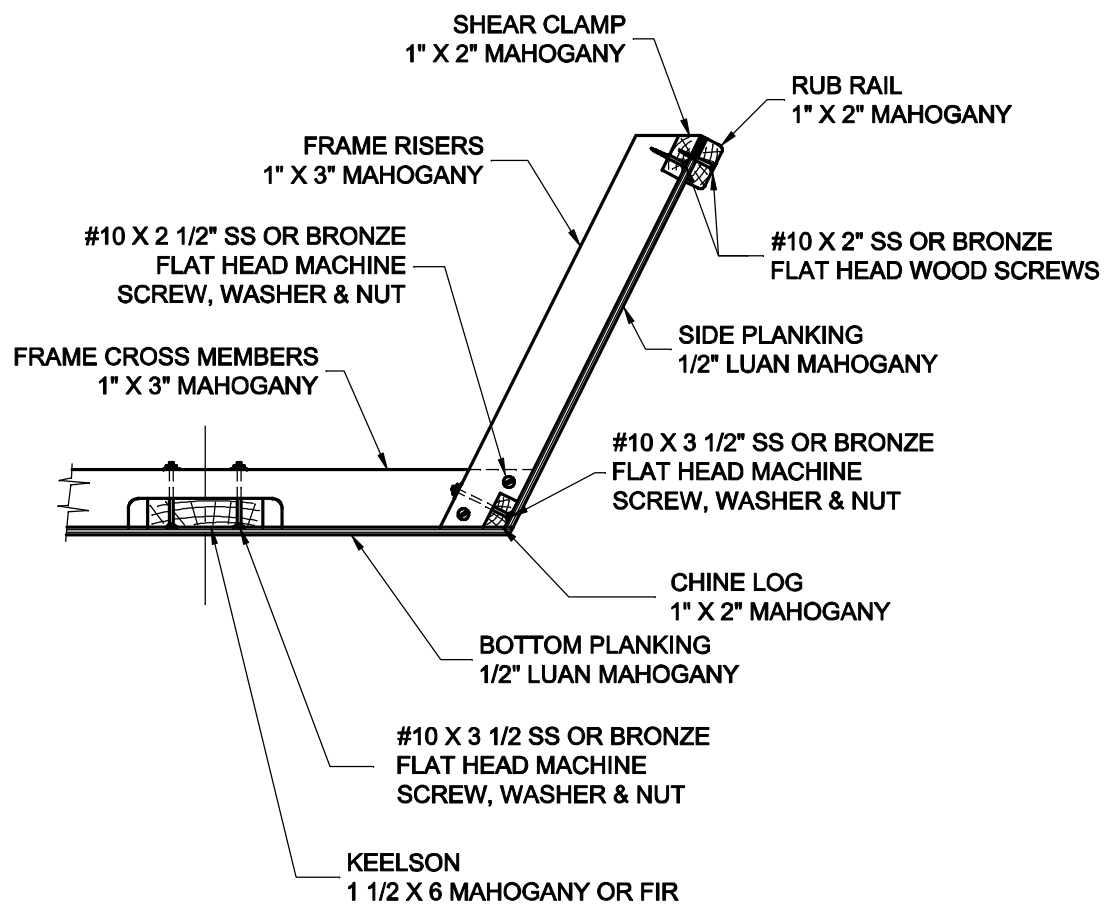


SPECIFICATIONS	
LENGTH	18' 1"
BEAM	6' 4"
HEIGHT	2' 10"
DRAFT	0' 3"
WEIGHT	325 LBS

Spira International, Inc. <i>Huntington Beach, California</i>		
CAROLINIAN 18' CAROLINA DORY		
DRAWN BY: J. SPIRA	DATE: 07/05/00	DRAWING NO. CAR001
SCALE 1" = 1'	SHEET OF	

NOTICE
 THIS DRAWING CONTAINS A PROPRIETARY DESIGN ASSIGNED TO SPIRA INTERNATIONAL, INC. ALL RIGHTS TO DUPLICATE, TRANSFER OR SELL THIS DESIGN ARE EXPRESSLY RESERVED. THE BUYER IS LICENSED TO BUILD ONE ASSEMBLY FROM THESE PLANS.

REVISIONS				
ZONE	LTR	DESCRIPTION	DATE	APPROVED
	A	UPDATED TO NEW FORMAT	9/11/08	JJS



**BUTT BLOCKS REQUIRED
 AT ALL PLYWOOD SEAMS
 (BLOCK ON INSIDE OF HULL)**

**CONSTRUCTION METHOD
 TYPICAL AT EACH FRAME**

Spira International, Inc. <i>Huntington Beach, California</i>		
CAROLINIAN 18' CAROLINA DORY		
DRAWN BY: J. SPIRA	DATE: 07/06/00	DRAWING NO. CAR003
SCALE 1/5 & NOTED		SHEET OF