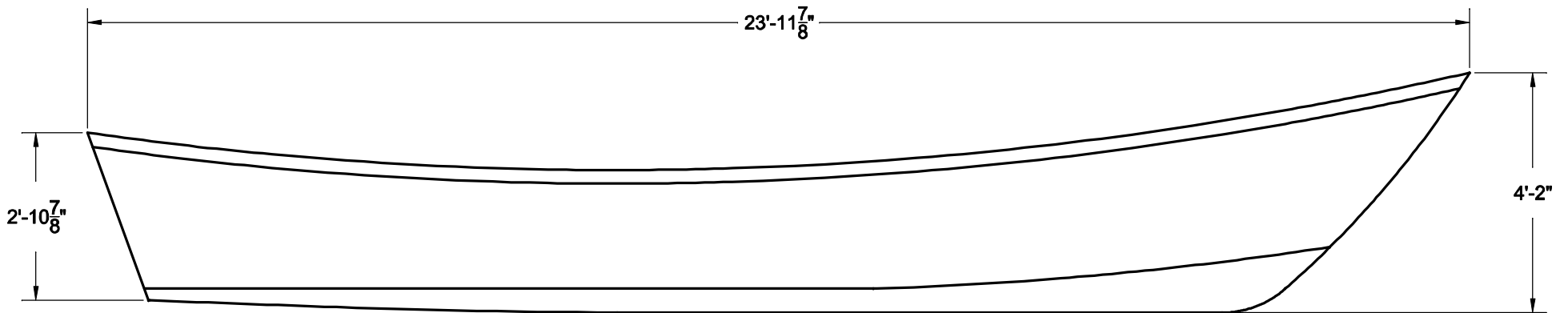
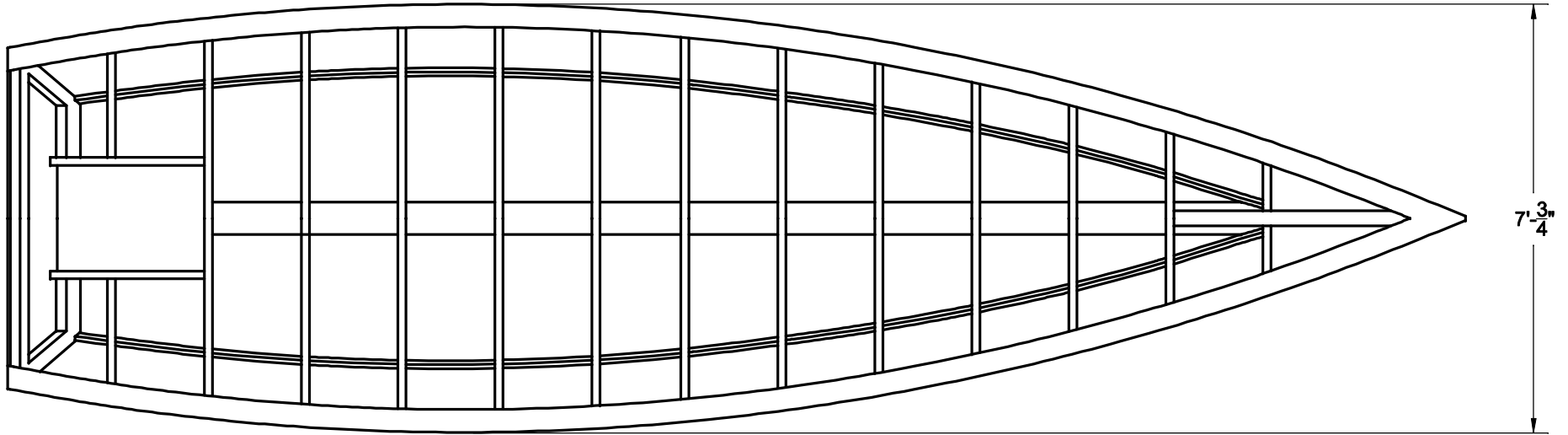


NOTICE

THIS DRAWING CONTAINS A PROPRIETARY DESIGN ASSIGNED TO SPIRA INTERNATIONAL, INC. ALL RIGHTS TO DUPLICATE, TRANSFER OR SELL THIS DESIGN ARE EXPRESSLY RESERVED. THE BUYER IS LICENSED TO BUILD ONE ASSEMBLY FROM THESE PLANS.

REVISIONS

ZONE	LTR	DESCRIPTION	DATE	APPROVED
	A	UPDATED TO NEW FORMAT	09/11/08	JJS



Spira International, Inc.
Huntington Beach, California

CHESAPEKE
24' VEE BOTTOM DORY

DRAWN BY:
J. SPIRA

DATE:
01/05/04

DRAWING NO.

CHES01

SCALE 3/4" = 1'

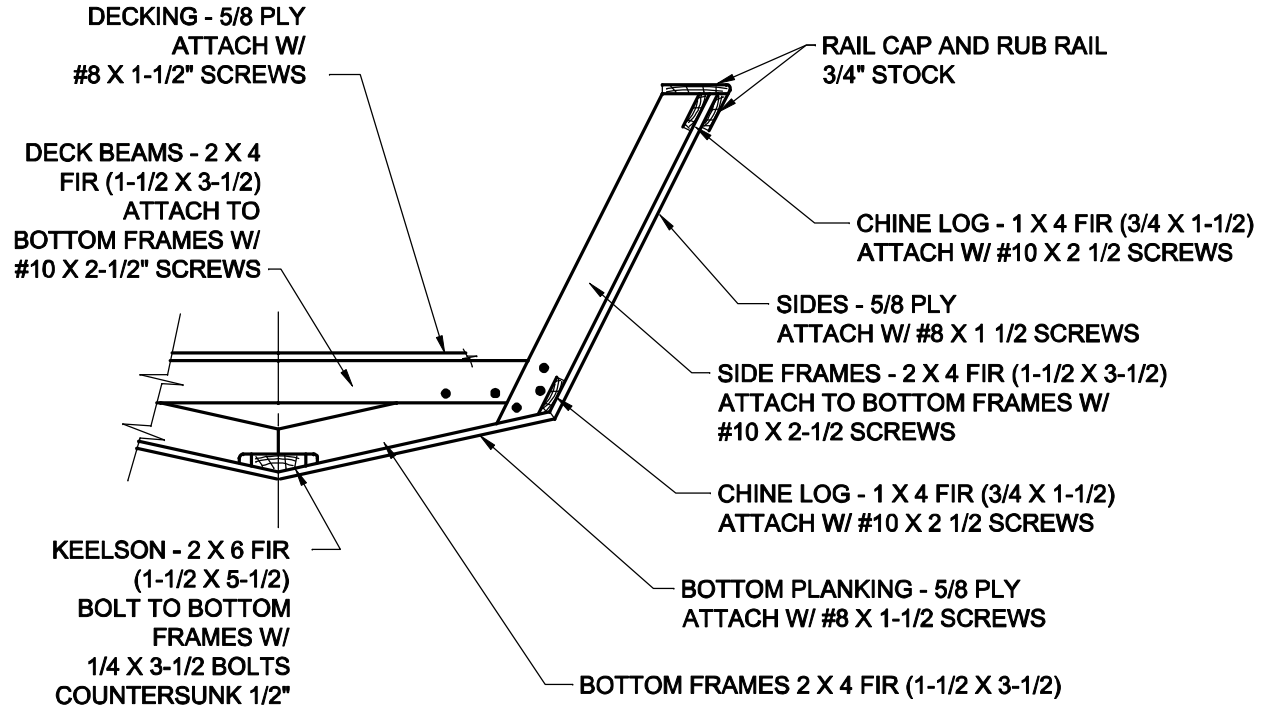
SHEET OF

NOTICE

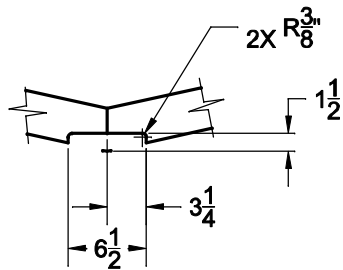
THIS DRAWING CONTAINS A PROPRIETARY DESIGN ASSIGNED TO SPIRA INTERNATIONAL, INC. ALL RIGHTS TO DUPLICATE, TRANSFER OR SELL THIS DESIGN ARE EXPRESSLY RESERVED. THE BUYER IS LICENSED TO BUILD ONE ASSEMBLY FROM THESE PLANS.

REVISIONS

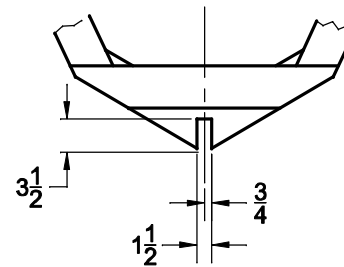
ZONE	LTR	DESCRIPTION	DATE	APPROVED
	A	UPDATED TO NEW FORMAT	09/11/08	JJS



**CONSTRUCTION METHOD
TYPICAL AT EACH FRAME**



KEELSON CUTOUT
TYPICAL ALL FRAMES
EXCEPT # 11, 12, 13



KEELSON CUTOUT
FRAMES #11 & 12

Spira International, Inc.
Huntington Beach, California

CHESAPEKE
24' VEE BOTTOM DORY

DRAWN BY: J. SPIRA	DATE: 01/05/04	DRAWING NO. CHES05
SCALE 1/20		SHEET OF