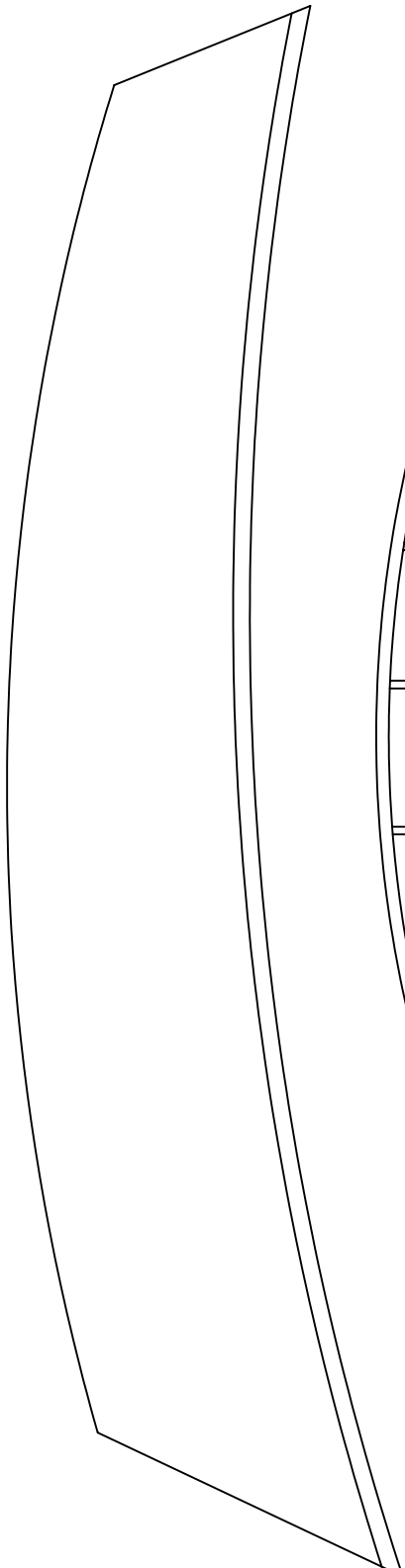
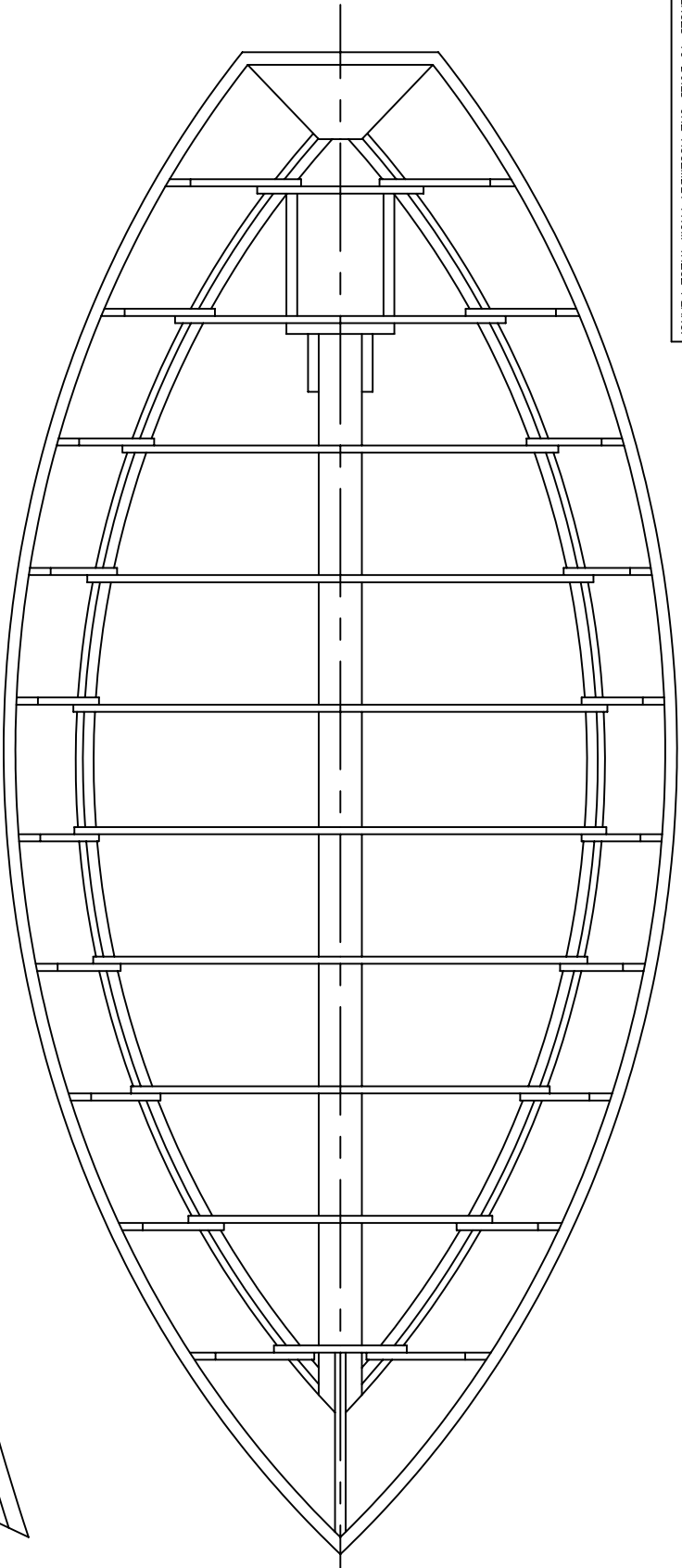


NOTICE  
 THIS DRAWING CONTAINS A PROPRIETARY DESIGN ASSIGNED TO SPIRA INTERNATIONAL, INC. ALL RIGHTS TO DUPLICATE, TRANSFER OR SELL THIS DESIGN ARE EXPRESSLY RESERVED. THE BUYER IS LICENSED TO BUILD ONE ASSEMBLY FROM THESE PLANS.

REVISIONS			
ZONE	LTR	DESCRIPTION	DATE R/M/DY APPROVED



CHINDOK	
LENGTH	17'
BEAM	7' 6"
FREEBOARD	30"

**Spira International, Inc.**  
*Huntington Beach, California*

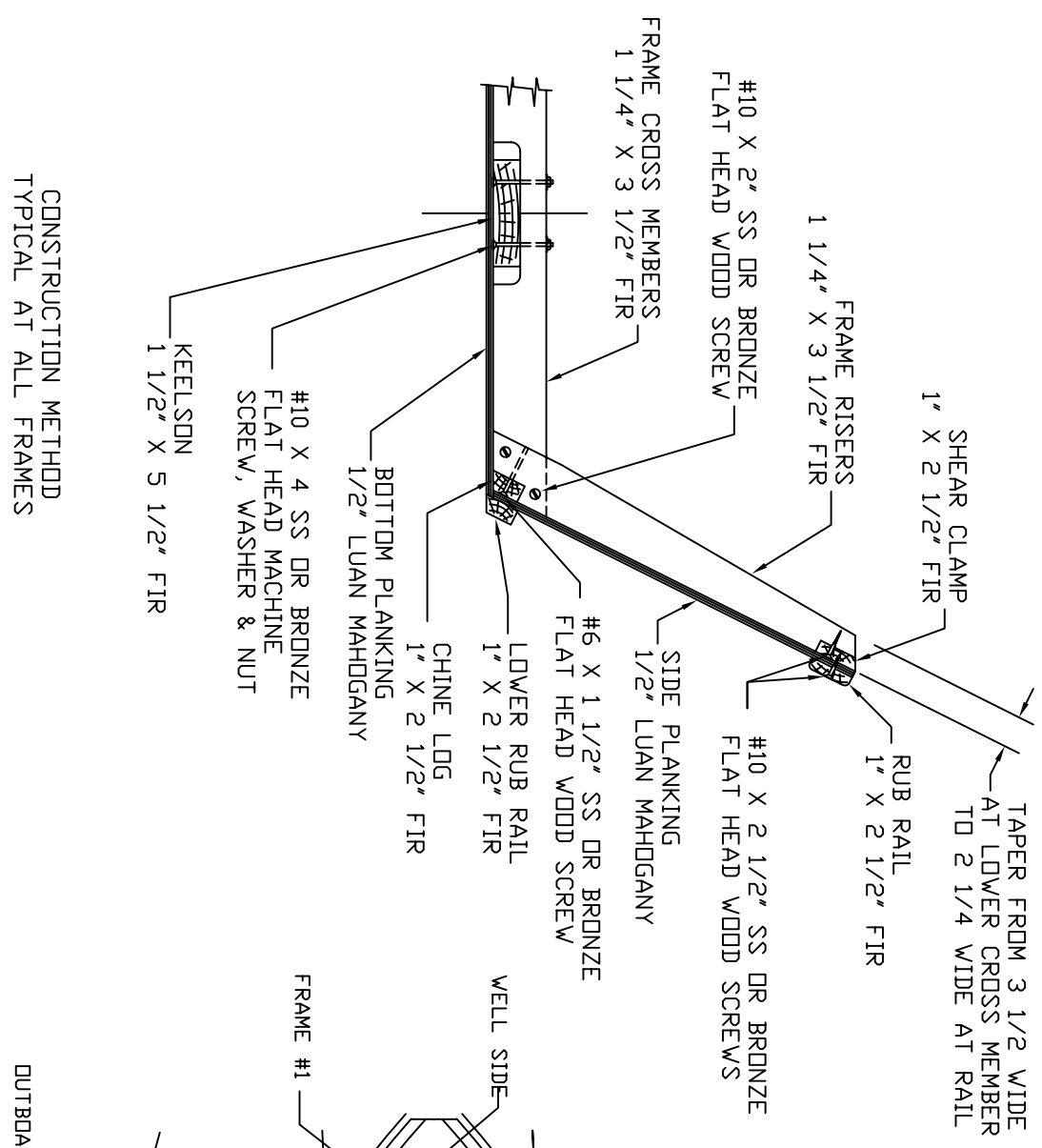
**CHINDOK**  
 MCKENZIE RIVER DRIFT BOAT

DRAWN BY: J. SPIRA  
 DATE: 000318  
 DRAWING NO: CHIND01

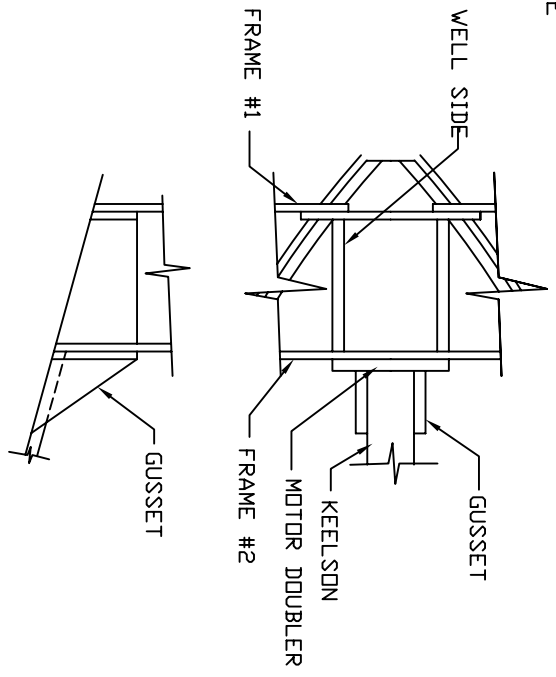
SCALE 1' = 1' SHEET OF

NOTICE  
THIS DRAWING CONTAINS A PROPRIETARY DESIGN ASSIGNED TO SPIRA INTERNATIONAL, INC. ALL RIGHTS TO DUPLICATE, TRANSFER OR SELL THIS DESIGN ARE EXPRESSLY RESERVED. THE BUYER IS LICENSED TO BUILD ONE ASSEMBLY FROM THESE PLANS.

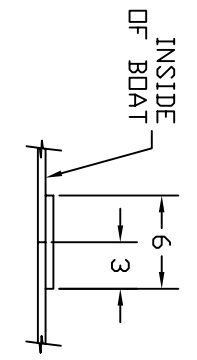
REVISIONS		
ZONE	LTR	DESCRIPTION
		DATE R/W/D/A/ APPROVED



CONSTRUCTION METHOD  
TYPICAL AT ALL FRAMES



BUTT BLOCK DETAIL  
FOR ALL PLYWOOD SEAMS  
SCALE 2\"/>



**Spira International, Inc.**  
Huntington Beach, California

**CHINDOK**  
CONSTRUCTION DETAILS

DRAWN BY: J. SPIRA  
DATE: 000318  
DRAWING NO.: CHIND04

SCALE 1\"/>

## Chinook Bill of Materials

10 pc. 4' x 8' sheet 1/2" thick lauan plywood (actually it's 7/16")  
8 pc. 12' long 1" x 2-1/2" clear pine (or fir) molding for rub rail, chine log & sheer clamp  
32 ft 1-1/4" x 3 1/2" clear fir for frames (random lengths)  
1 pc. 4 ft. 1-1/4" x 11-1/2" clear fir for aft two frame bottoms  
1 pc. 16 ft - 1-1/2" x 5 1/2" clear fir for keelson (one piece)  
1 pc. 8' 1-1/2" x 11-1/2" clear fir for motor mount, gussets and well sides.  
12 dozen #8 x 1 1/4" stainless steel wood screws  
4 dozen #10 x 2" stainless steel wood screws  
16 ea. #10 x 4" flat head stainless machine screws, washers & nuts  
8 ea. 1/4" x 3" stainless steel lag screws  
5 - gallon epoxy  
A dozen or so inexpensive disposable paint brushes of various widths  
Rubber gloves  
Respirators (for sanding dust) & safety glasses

In addition, for the strongback and frame jig, you'll need the following materials:

1 - 16' fir 4x6s  
3 - 8' 2x4 studs  
3 - 3' fir 4x4s  
6 - Metal Tee Brackets  
1 sheet 1/2" shop ply  
Some scraps of 1x2 furring strip  
Handful of 16d box nails  
Handful of 2d box nails  
Woodworking (or white) glue