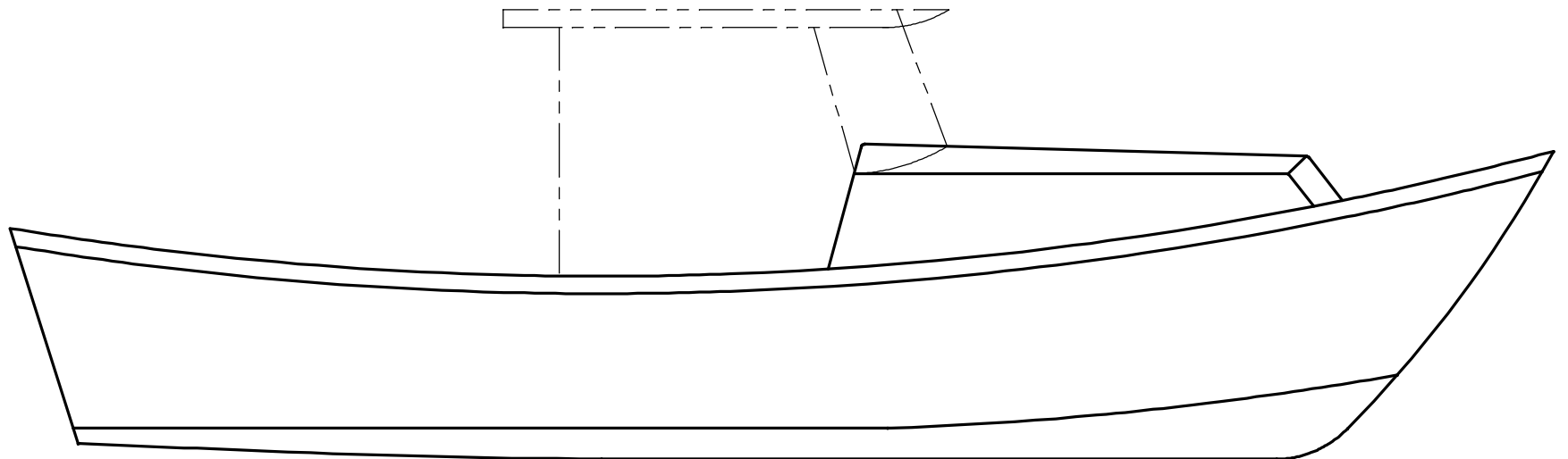
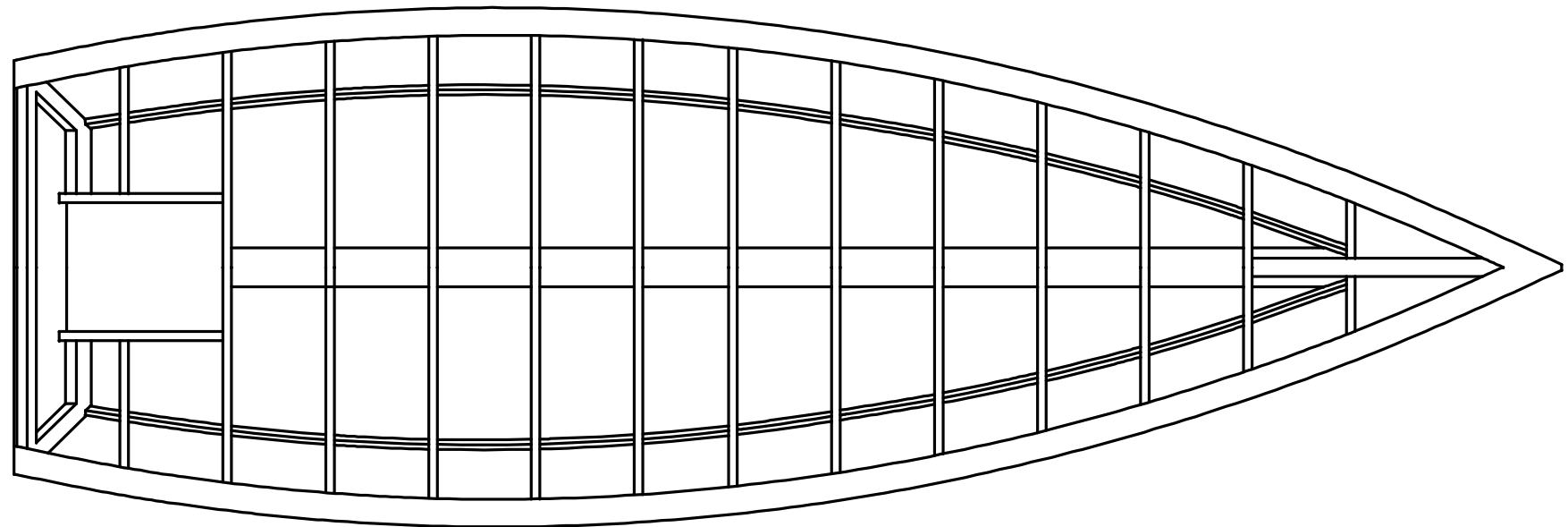


NOTICE
 THIS DRAWING CONTAINS A PROPRIETARY DESIGN ASSIGNED TO SPIRA INTERNATIONAL, INC. ALL RIGHTS TO DUPLICATE, TRANSFER OR SELL THIS DESIGN ARE EXPRESSLY RESERVED. THE BUYER IS LICENSED TO BUILD ONE ASSEMBLY FROM THESE PLANS.

REVISIONS				
ZONE	LTR	DESCRIPTION	DATE	APPROVED
	A	UPDATED TO NEW FORMAT	09/13/08	JJS



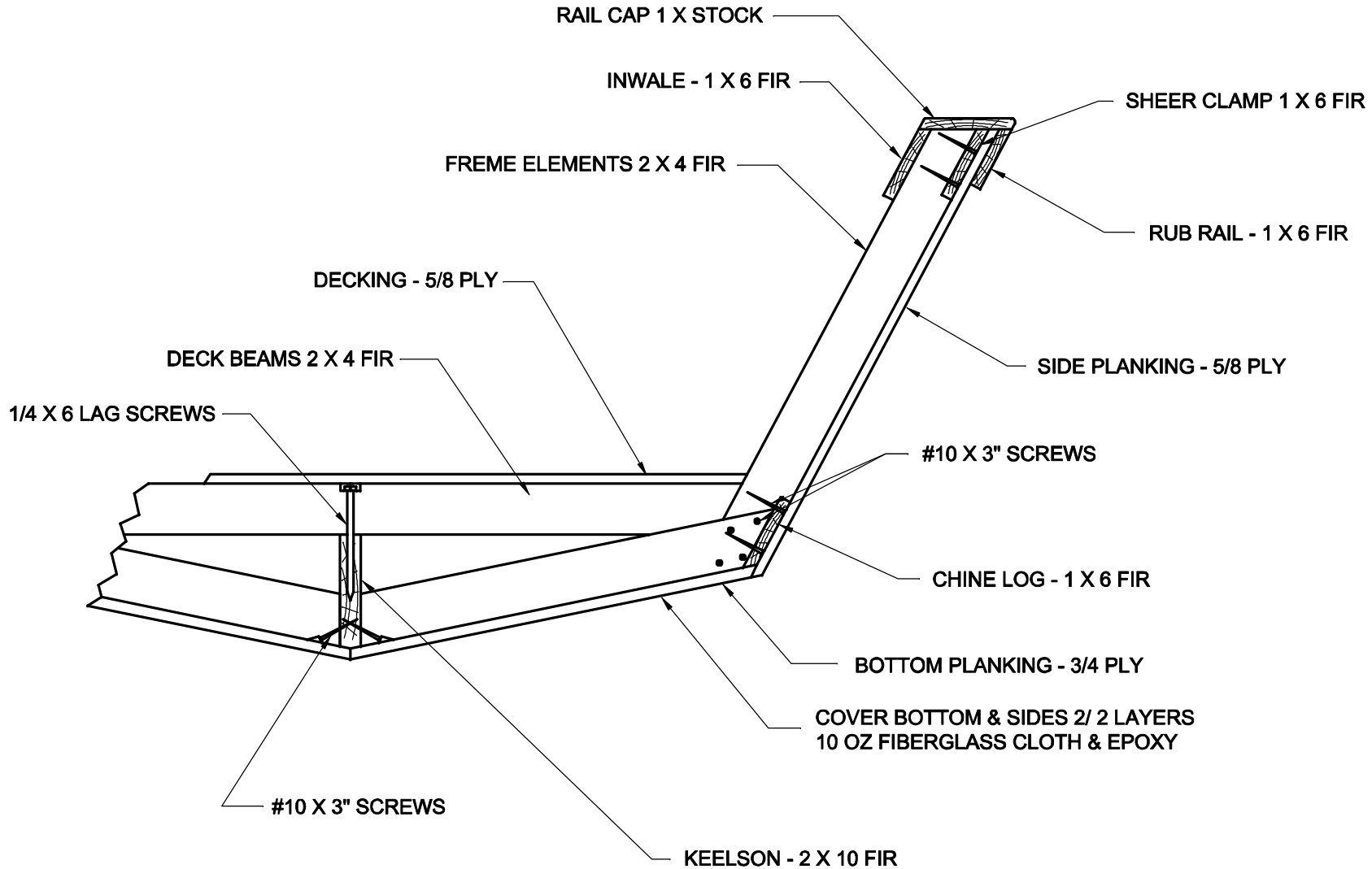
Spira International, Inc.
Huntington Beach, California

**CLEMENTE
 24' VEE BOTTOM DORY**

DRAWN BY: J. SPIRA	DATE: 01/05/04	DRAWING NO. CLEM01
SCALE 3/4" = 1'		SHEET OF

NOTICE
 THIS DRAWING CONTAINS A PROPRIETARY DESIGN ASSIGNED TO SPIRA INTERNATIONAL, INC. ALL RIGHTS TO DUPLICATE, TRANSFER OR SELL THIS DESIGN ARE EXPRESSLY RESERVED. THE BUYER IS LICENSED TO BUILD ONE ASSEMBLY FROM THESE PLANS.

REVISIONS				
ZONE	LTR	DESCRIPTION	DATE	APPROVED
	A	UPDATED TO NEW FORMAT	09/13/08	JJS



CONSTRUCTION DETAIL
 TYPICAL - EACH FRAME

Spira International, Inc.
 Huntington Beach, California

CLEMENTE
 24' VEE BOTTOM DORY

DRAWN BY: J. SPIRA	DATE: 01/05/04	DRAWING NO. CLEM05
SCALE 3/4" = 1'		SHEET OF