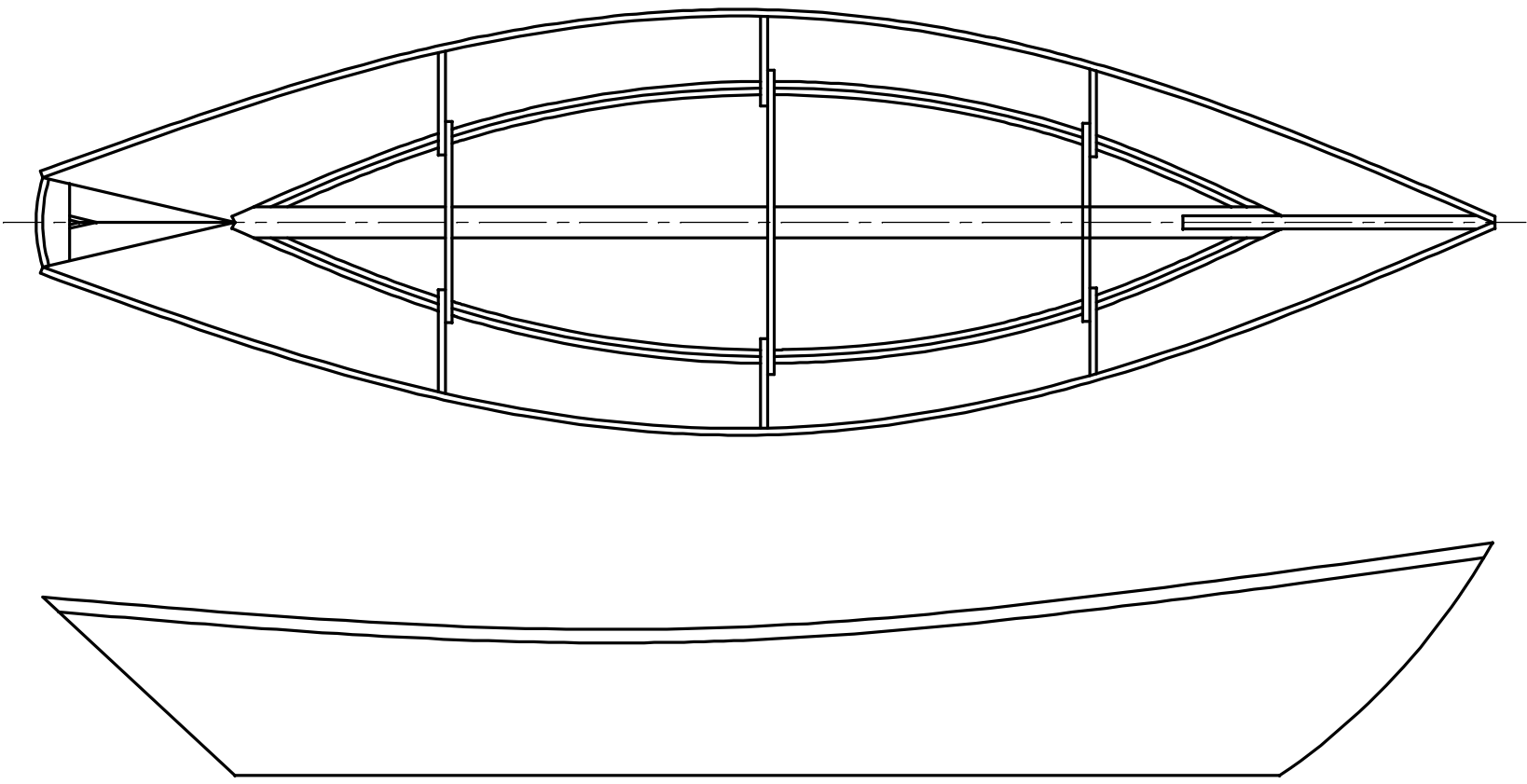


NOTICE
 THIS DRAWING CONTAINS A PROPRIETARY DESIGN ASSIGNED TO SPIRA INTERNATIONAL, INC. ALL RIGHTS TO DUPLICATE, TRANSFER OR SELL THIS DESIGN ARE EXPRESSLY RESERVED. THE BUYER IS LICENSED TO BUILD ONE ASSEMBLY FROM THESE PLANS.

REVISIONS				
ZONE	LTR	DESCRIPTION	DATE	APPROVED
	A	UPDATED TO NEW FORMAT	09/17/08	JJS



JUNEAU 14' FRAMED DORY	
LENGTH	14' 0"
BEAM	3' 8"
HEIGHT	2' 2"
WEIGHT	125 LBS

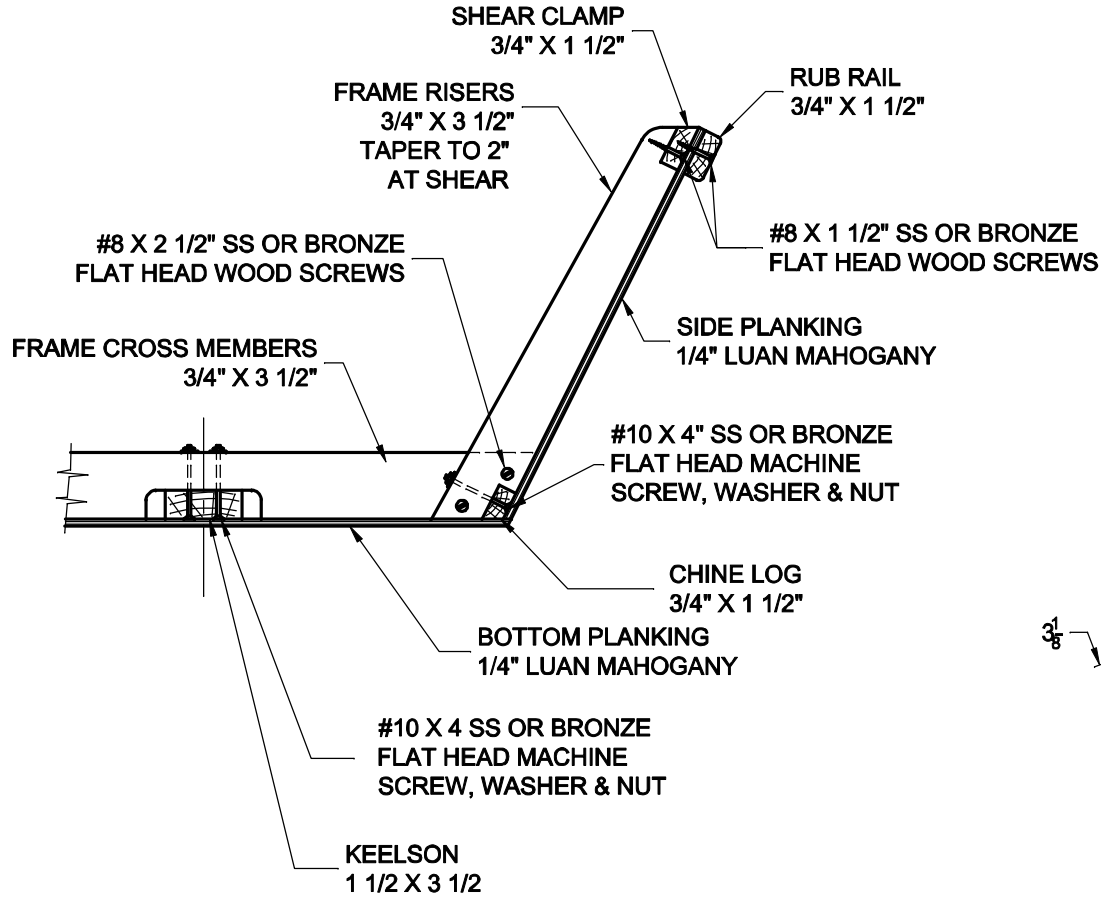
Spira International, Inc. <i>Huntington Beach, California</i>		
JUNEAU 14' FRAMED DORY		
DRAWN BY: J. SPIRA	DATE: 12/05/01	DRAWING NO. JUNE01
SCALE 1/10	SHEET OF	

NOTICE

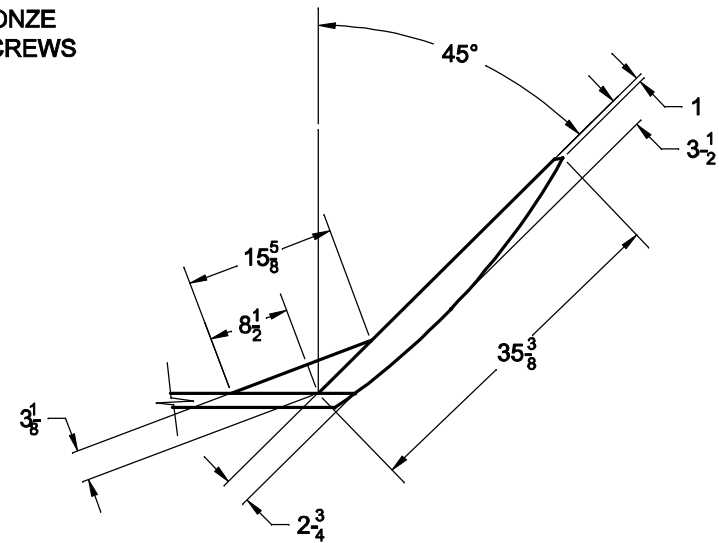
THIS DRAWING CONTAINS A PROPRIETARY DESIGN ASSIGNED TO SPIRA INTERNATIONAL, INC. ALL RIGHTS TO DUPLICATE, TRANSFER OR SELL THIS DESIGN ARE EXPRESSLY RESERVED. THE BUYER IS LICENSED TO BUILD ONE ASSEMBLY FROM THESE PLANS.

REVISIONS

ZONE	LTR	DESCRIPTION	DATE	APPROVED
	A	UPDATED TO NEW FORMAT	09/17/08	JJS



CONSTRUCTION METHOD
TYPICAL AT EACH FRAME



STEM DETAIL

Spira International, Inc.
Huntington Beach, California

JUNEAU
FRAMING DETAILS

DRAWN BY: J. SPIRA	DATE: 12/12/01	DRAWING NO. JUNE03
SCALE 1/10 & NOTED		SHEET OF