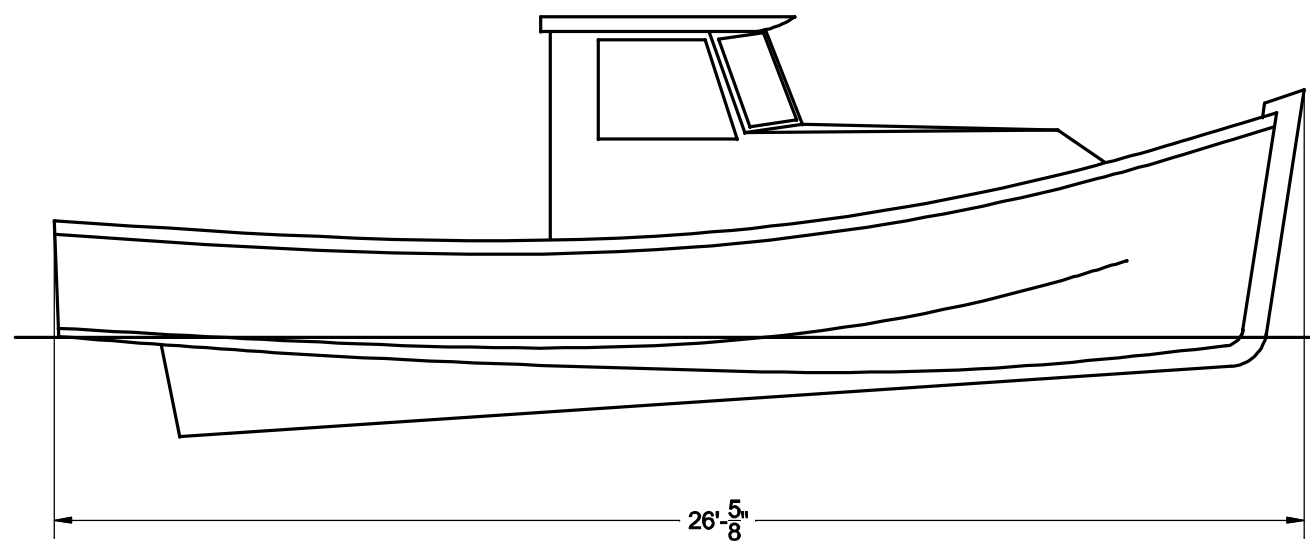
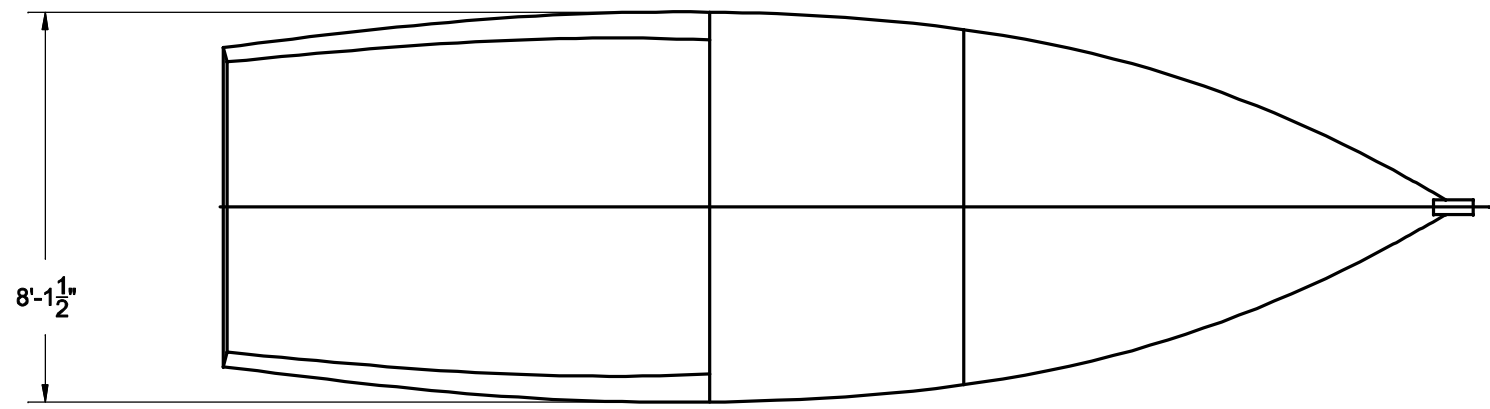


NOTICE
 THIS DRAWING CONTAINS A PROPRIETARY DESIGN ASSIGNED TO SPIRA INTERNATIONAL, INC. ALL RIGHTS TO DUPLICATE, TRANSFER OR SELL THIS DESIGN ARE EXPRESSLY RESERVED. THE BUYER IS LICENSED TO BUILD ONE ASSEMBLY FROM THESE PLANS.

| REVISIONS | | | | |
|-----------|-----|-------------|------|----------|
| ZONE | LTR | DESCRIPTION | DATE | APPROVED |
| | | | | |

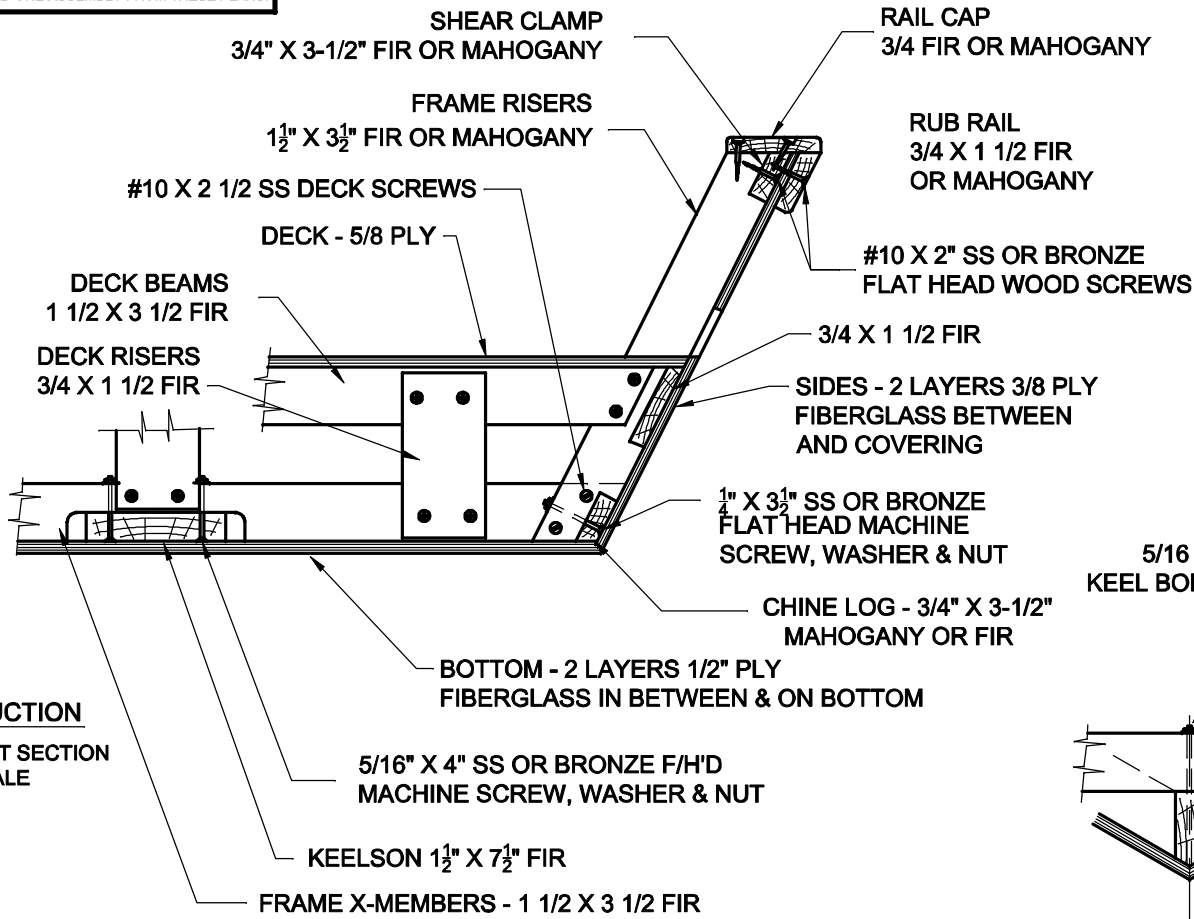


| | | |
|--|-------------------|-----------------------|
| <i>Spira International, Inc.</i> Huntington Beach, California | | |
| KONA 26' HAWAIIAN SAMPAN | | |
| DRAWN BY: J. SPIRA | DATE: 01/14/08 | DRAWING NO. KONA01 |
| SCALE 1/2" = 1' & NOTED | | SHEET OF |

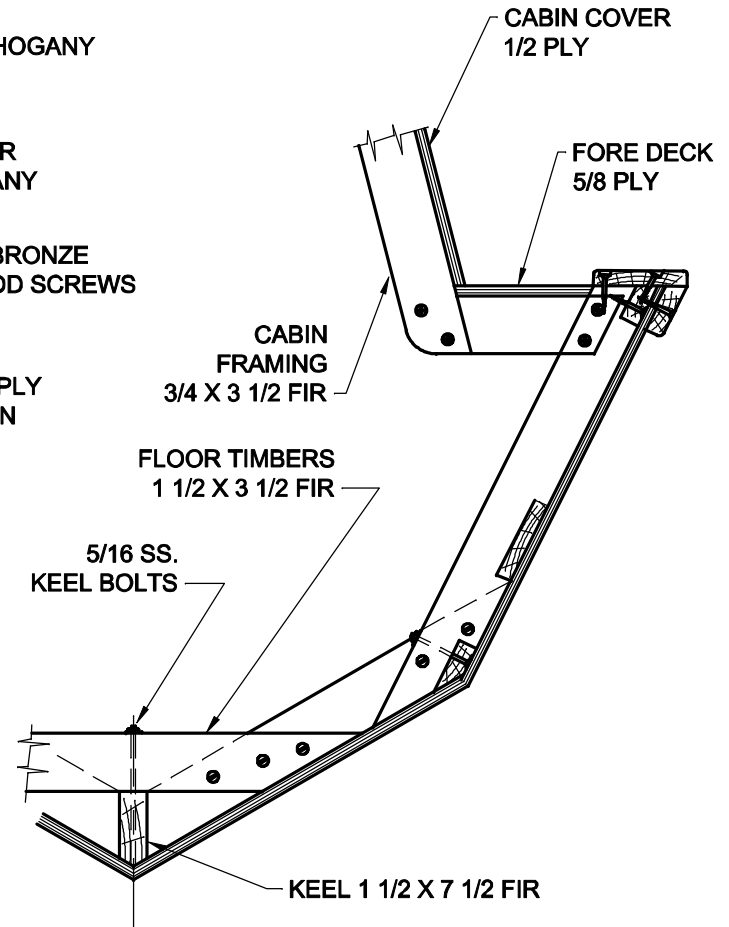
NOTICE

THIS DRAWING CONTAINS A PROPRIETARY DESIGN ASSIGNED TO SPIRA INTERNATIONAL, INC. ALL RIGHTS TO DUPLICATE, TRANSFER OR SELL THIS DESIGN ARE EXPRESSLY RESERVED. THE BUYER IS LICENSED TO BUILD ONE ASSEMBLY FROM THESE PLANS.

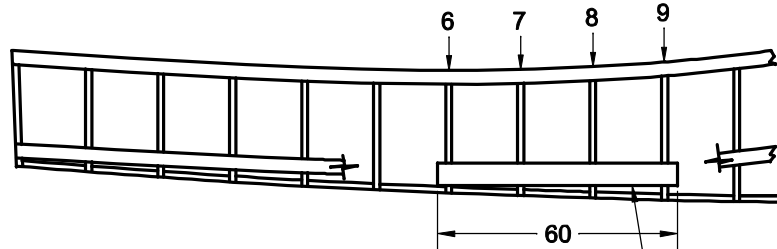
| REVISIONS | | | | |
|-----------|-----|-------------|------|----------|
| ZONE | LTR | DESCRIPTION | DATE | APPROVED |
| | | | | |



CONSTRUCTION
TYPICAL AT AFT SECTION
NO SCALE



VEE BOTTOM CONSTRUCTION
FORWARD SECTIONS
NO SCALE



MOTOR MOUNT TIMBERS
2 REQ'D - SPACED TO ACCOMODATE SELECTED ENGINE
NOTCH BOTTOM TO MATE WITH ALL FOUR RIBS

4X6 FIR MOTOR MOUNTS

Spira International, Inc.
Huntington Beach, California

KONA
25' HAWAIIAN SAMPAN

| | | |
|-----------------------|-------------------|-----------------------|
| DRAWN BY: J. SPIRA | DATE: 01/14/08 | DRAWING NO. KONA04 |
|-----------------------|-------------------|-----------------------|

SCALE 1/2" = 1' & NOTED SHEET OF