

4

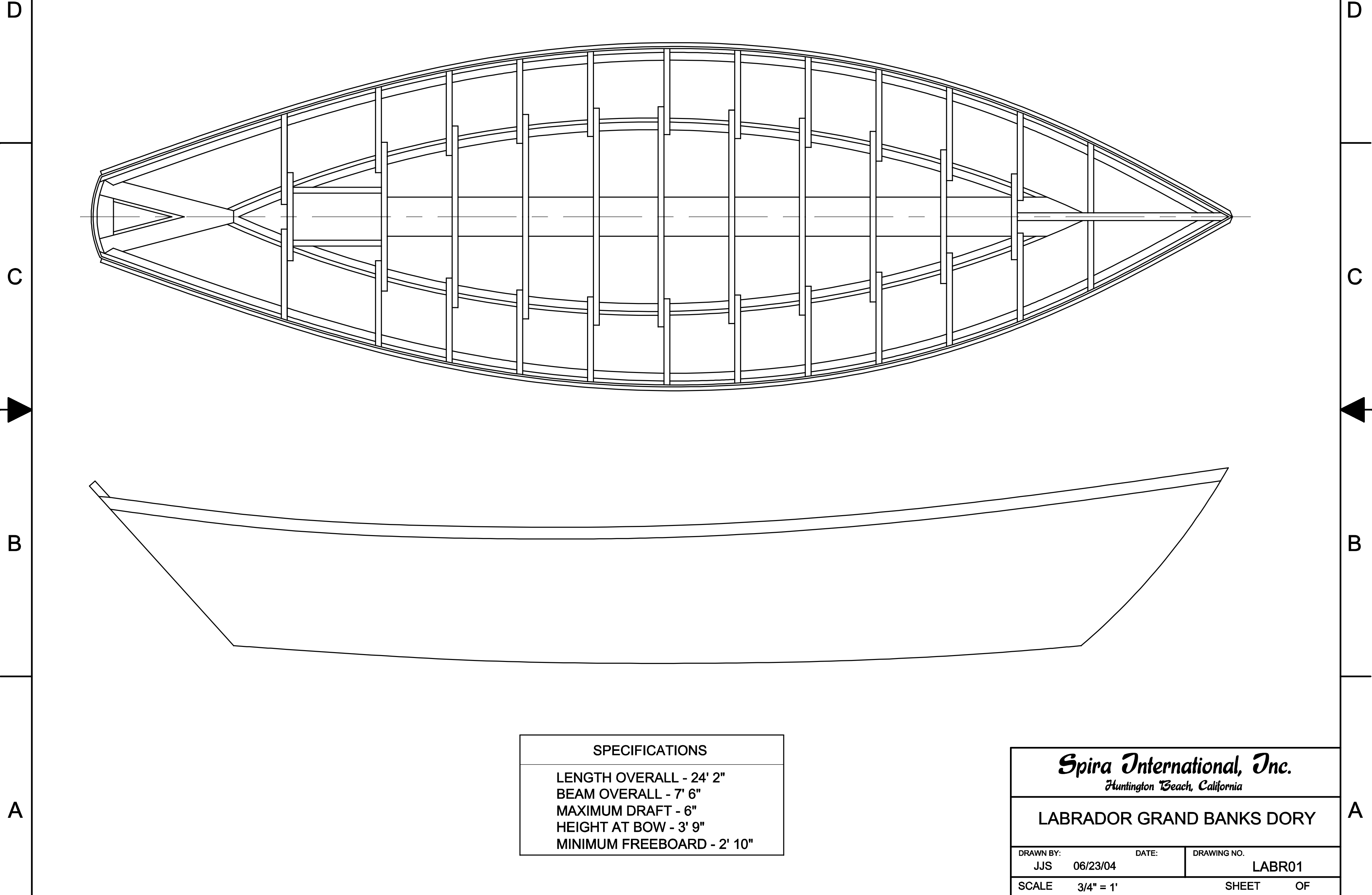
3

2

1

NOTICE
 THIS DRAWING CONTAINS A PROPRIETARY DESIGN ASSIGNED TO SPIRA INTERNATIONAL, INC. ALL RIGHTS TO DUPLICATE, TRANSFER OR SELL THIS DESIGN ARE EXPRESSLY RESERVED. THE BUYER IS LICENSED TO BUILD ONE ASSEMBLY FROM THESE PLANS.

REVISIONS				
ZONE	LTR	DESCRIPTION	DATE	APPROVED
	A	UPDATED TO NEW FORMAT	09/19/08	JJS



SPECIFICATIONS
LENGTH OVERALL - 24' 2"
BEAM OVERALL - 7' 6"
MAXIMUM DRAFT - 6"
HEIGHT AT BOW - 3' 9"
MINIMUM FREEBOARD - 2' 10"

Spira International, Inc. <i>Huntington Beach, California</i>		
LABRADOR GRAND BANKS DORY		
DRAWN BY: JJS	DATE: 06/23/04	DRAWING NO. LABR01
SCALE 3/4" = 1'	SHEET OF	

4

3

2

1

A

B

C

D

A

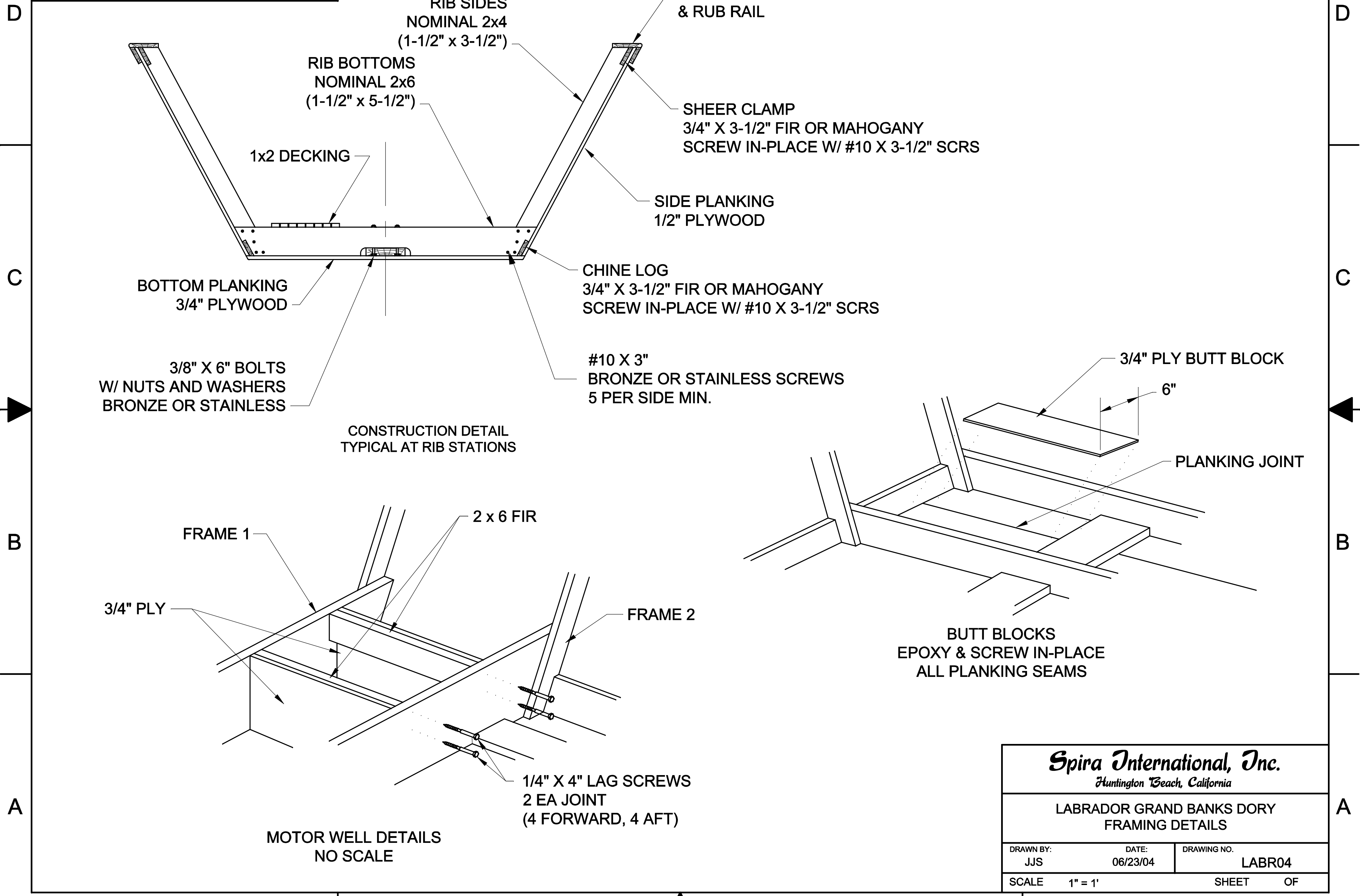
B

C

D

NOTICE
THIS DRAWING CONTAINS A PROPRIETARY DESIGN ASSIGNED TO SPIRA INTERNATIONAL, INC. ALL RIGHTS TO DUPLICATE, TRANSFER OR SELL THIS DESIGN ARE EXPRESSLY RESERVED. THE BUYER IS LICENSED TO BUILD ONE ASSEMBLY FROM THESE PLANS.

REVISIONS				
ZONE	LTR	DESCRIPTION	DATE	APPROVED
	A	UPDATED TO NEW FORMAT	09/19/08	JJS



RIB SIDES
NOMINAL 2x4
(1-1/2" x 3-1/2")

RIB BOTTOMS
NOMINAL 2x6
(1-1/2" x 5-1/2")

1x2 DECKING

3/4" RAIL CAP
& RUB RAIL

SHEER CLAMP
3/4" X 3-1/2" FIR OR MAHOGANY
SCREW IN-PLACE W/ #10 X 3-1/2" SCRS

SIDE PLANKING
1/2" PLYWOOD

BOTTOM PLANKING
3/4" PLYWOOD

CHINE LOG
3/4" X 3-1/2" FIR OR MAHOGANY
SCREW IN-PLACE W/ #10 X 3-1/2" SCRS

#10 X 3"
BRONZE OR STAINLESS SCREWS
5 PER SIDE MIN.

3/8" X 6" BOLTS
W/ NUTS AND WASHERS
BRONZE OR STAINLESS

CONSTRUCTION DETAIL
TYPICAL AT RIB STATIONS

3/4" PLY BUTT BLOCK

6"

PLANKING JOINT

BUTT BLOCKS
EPOXY & SCREW IN-PLACE
ALL PLANKING SEAMS

FRAME 1

2 x 6 FIR

3/4" PLY

FRAME 2

1/4" X 4" LAG SCREWS
2 EA JOINT
(4 FORWARD, 4 AFT)

MOTOR WELL DETAILS
NO SCALE

Spira International, Inc.
Huntington Beach, California

LABRADOR GRAND BANKS DORY
FRAMING DETAILS

DRAWN BY: JJS	DATE: 06/23/04	DRAWING NO. LABR04
SCALE 1" = 1'	SHEET OF	