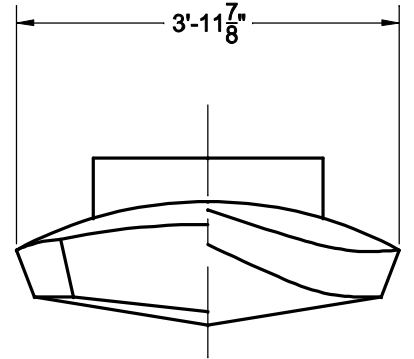
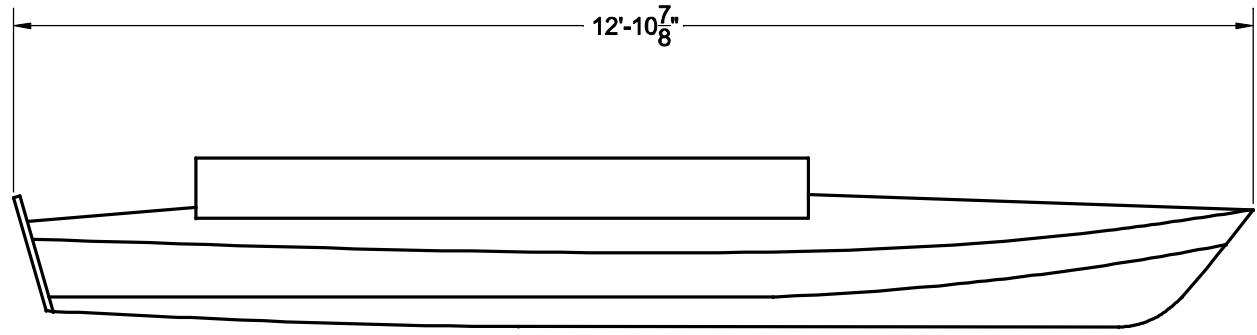
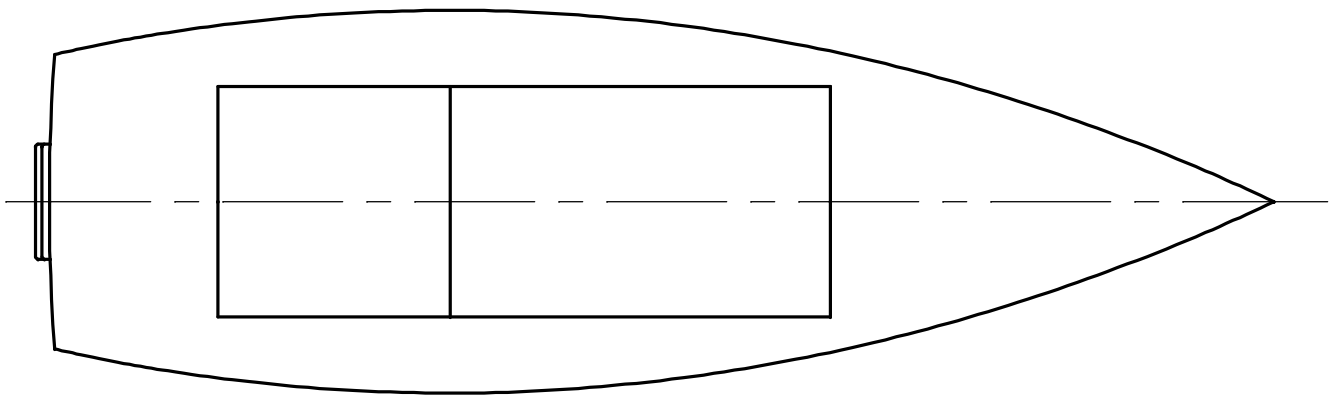


NOTICE
 THIS DRAWING CONTAINS A PROPRIETARY DESIGN ASSIGNED TO SPIRA INTERNATIONAL, INC. ALL RIGHTS TO DUPLICATE, TRANSFER OR SELL THIS DESIGN ARE EXPRESSLY RESERVED. THE BUYER IS LICENSED TO BUILD ONE ASSEMBLY FROM THESE PLANS.

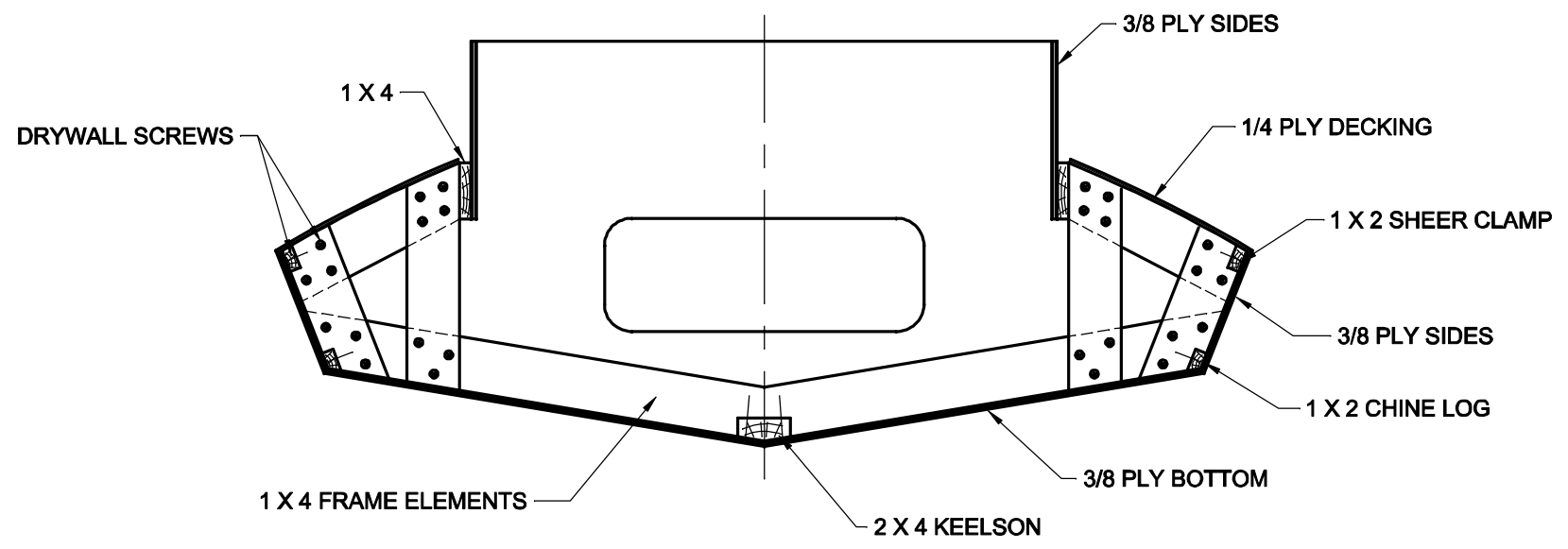
REVISIONS				
ZONE	LTR	DESCRIPTION	DATE	APPROVED



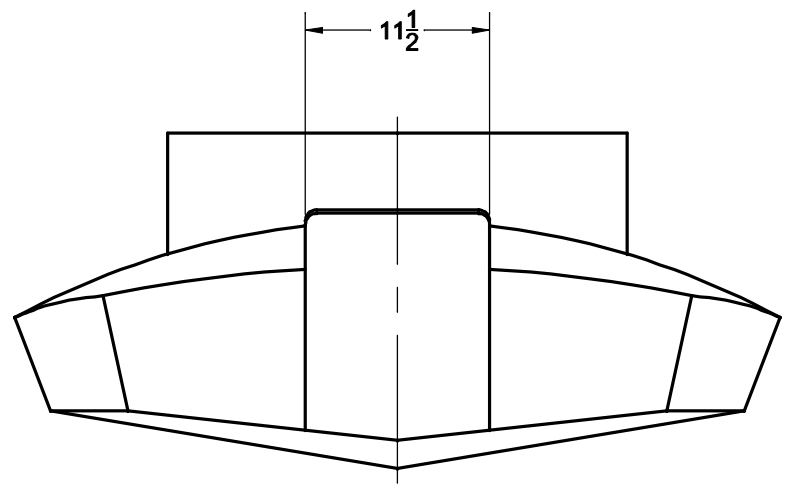
<i>Spira International, Inc.</i> Huntington Beach, California		
MARSH RAT 13' ULTRALIGHT HUNTING BOAT		
DRAWN BY: J. SPIRA	DATE: 03/26/06	DRAWING NO. MARS01
SCALE 1" = 1'		SHEET OF

NOTICE
 THIS DRAWING CONTAINS A PROPRIETARY DESIGN ASSIGNED TO SPIRA INTERNATIONAL, INC. ALL RIGHTS TO DUPLICATE, TRANSFER OR SELL THIS DESIGN ARE EXPRESSLY RESERVED. THE BUYER IS LICENSED TO BUILD ONE ASSEMBLY FROM THESE PLANS.

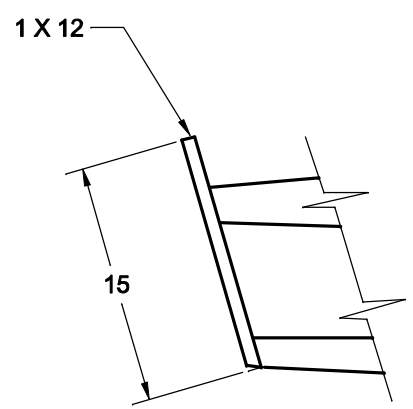
REVISIONS				
ZONE	LTR	DESCRIPTION	DATE	APPROVED



TYPICAL CONSTRUCTION



MOTORBOARD DETAILS
 EPOXY & SCREW IN-PLACE



Spira International, Inc. <i>Huntington Beach, California</i>		
MARSH RAT 13' ULTRALIGHT HUNTING BOAT		
DRAWN BY: J. SPIRA	DATE: 03/26/06	DRAWING NO. MARS03
SCALE 2" = 1'		SHEET OF