

4

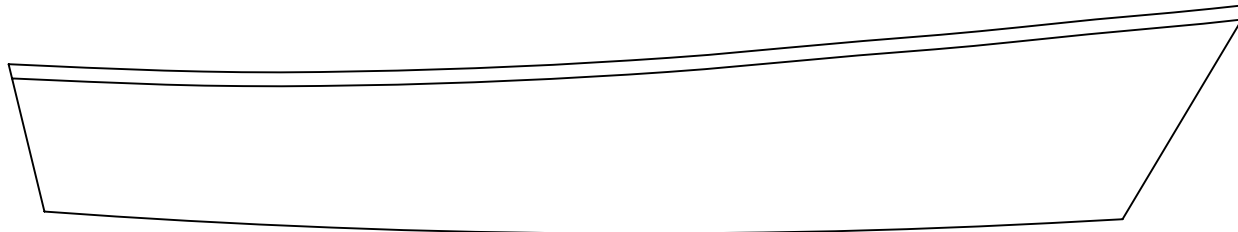
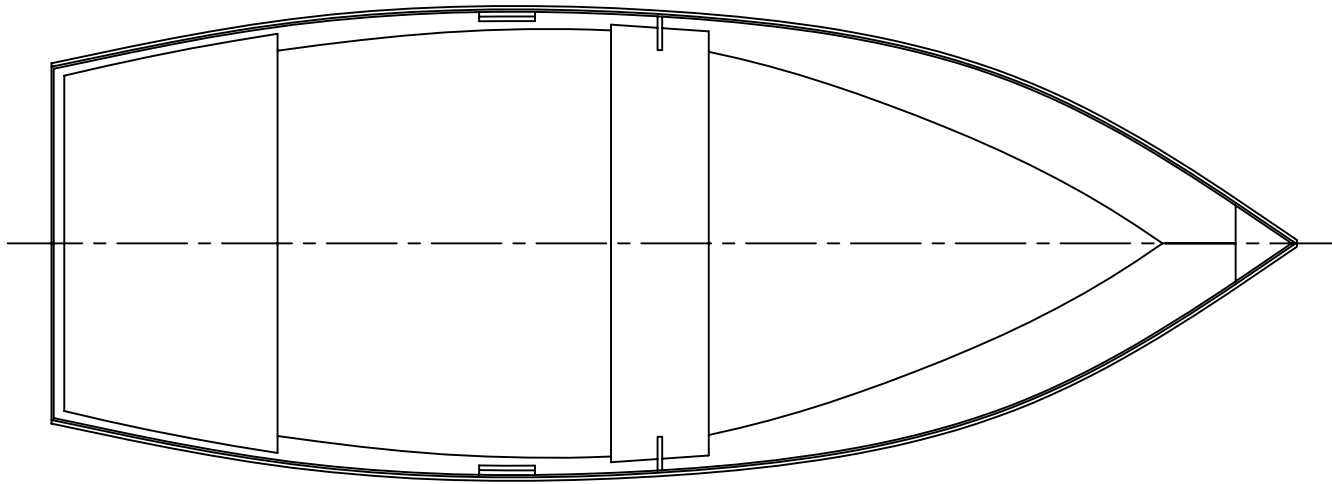
3

2

1

NOTICE
 THIS DRAWING CONTAINS A PROPRIETARY DESIGN ASSIGNED TO SPIRA INTERNATIONAL, INC. ALL RIGHTS TO DUPLICATE, TRANSFER OR SELL THIS DESIGN ARE EXPRESSLY RESERVED. THE BUYER IS LICENSED TO BUILD ONE ASSEMBLY FROM THESE PLANS.

REVISIONS				
ZONE	LTR	DESCRIPTION	DATE YR/MO/DA	APPROVED



SPECIFICATIONS	
LENGTH	11' 1"
BEAM	4' 3"
HEIGHT	1' 10"
DRAFT	0' 2"
WEIGHT	65 LBS

Spira International, Inc.
 Huntington Beach, California

MISSION BAY
 11' SKIFF

DRAWN BY: J. SPIRA	DATE: 02/21/01	DRAWING NO. MISS01
-----------------------	-------------------	-----------------------

SCALE 1/10 SHEET OF

4

3

2

1

D

D

C

C

B

B

A

A

4

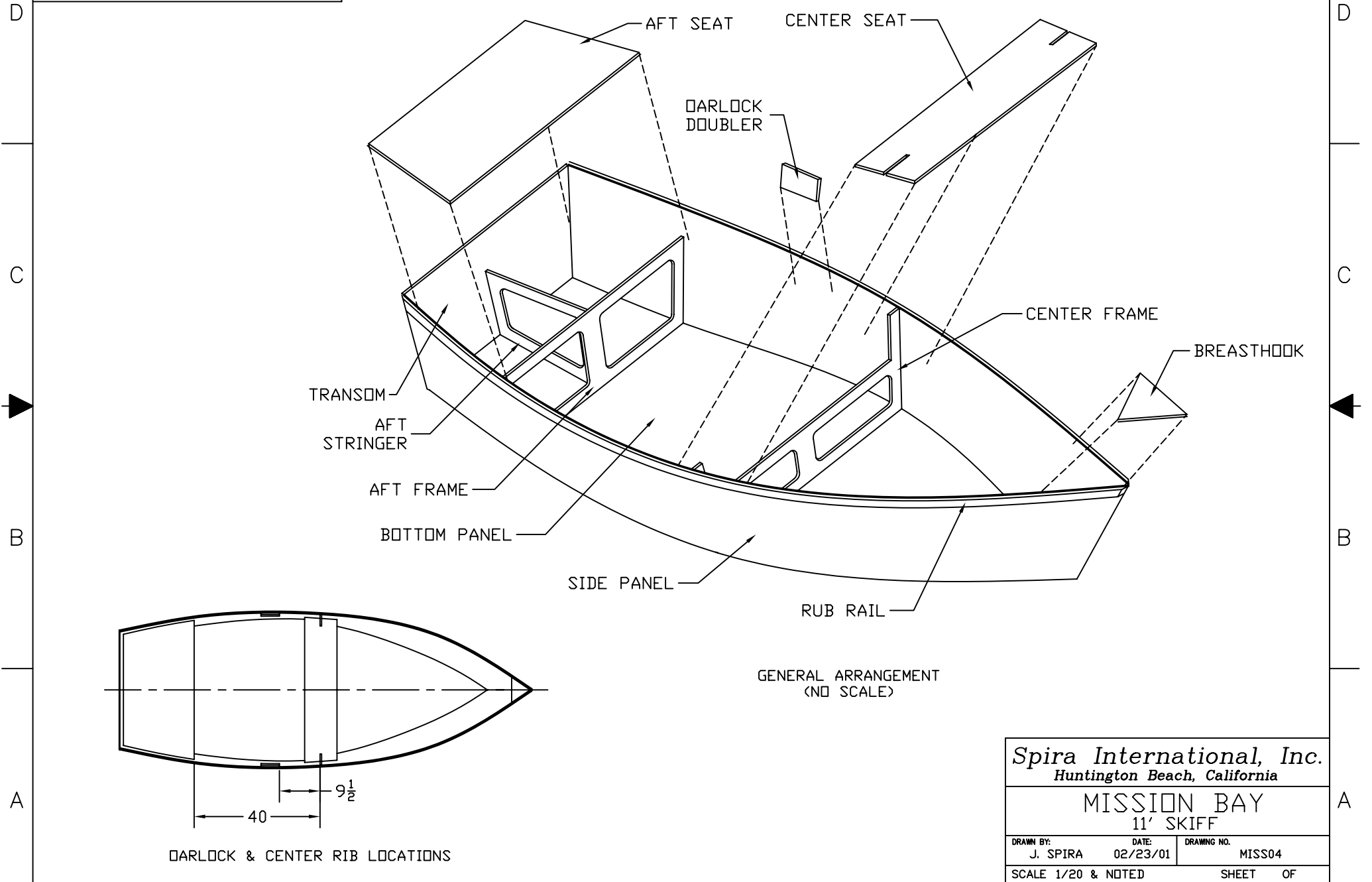
3

2

1

NOTICE
 THIS DRAWING CONTAINS A PROPRIETARY DESIGN ASSIGNED TO SPIRA INTERNATIONAL, INC. ALL RIGHTS TO DUPLICATE, TRANSFER OR SELL THIS DESIGN ARE EXPRESSLY RESERVED. THE BUYER IS LICENSED TO BUILD ONE ASSEMBLY FROM THESE PLANS.

REVISIONS					
ZONE	LTR	DESCRIPTION	DATE	YR/MO/DA	APPROVED



GENERAL ARRANGEMENT
 (NO SCALE)

Spira International, Inc.
 Huntington Beach, California

MISSION BAY
 11' SKIFF

DRAWN BY: J. SPIRA	DATE: 02/23/01	DRAWING NO. MISS04
SCALE 1/20 & NOTED		SHEET OF

4

3

2

1

DARLOCK & CENTER RIB LOCATIONS