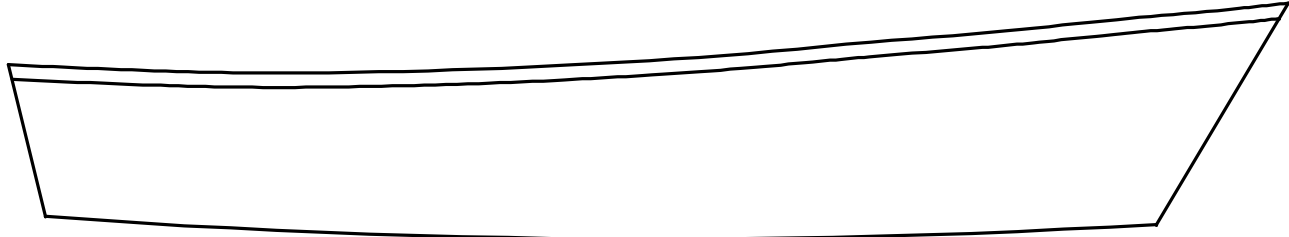
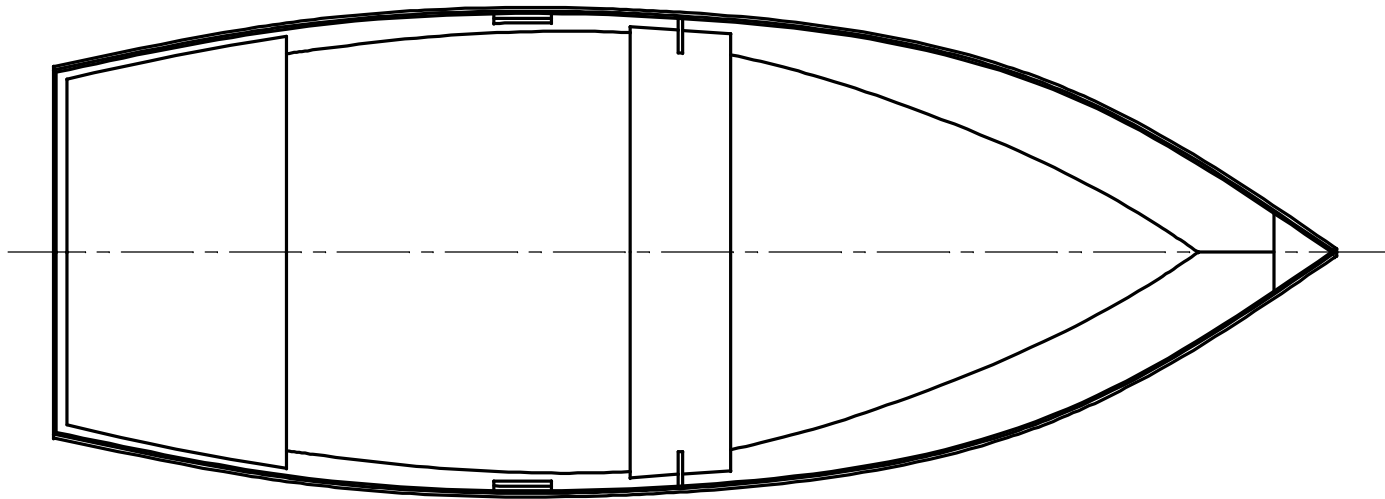


NOTICE
 THIS DRAWING CONTAINS A PROPRIETARY DESIGN ASSIGNED TO SPIRA INTERNATIONAL, INC. ALL RIGHTS TO DUPLICATE, TRANSFER OR SELL THIS DESIGN ARE EXPRESSLY RESERVED. THE BUYER IS LICENSED TO BUILD ONE ASSEMBLY FROM THESE PLANS.

REVISIONS				
ZONE	LTR	DESCRIPTION	DATE	APPROVED
	A	UPDATED TO NEW FORMAT	09/24/08	JJS



SPECIFICATIONS	
LENGTH	11' 1"
BEAM	4' 3"
HEIGHT	1' 10"
DRAFT	0' 2"
WEIGHT	65 LBS

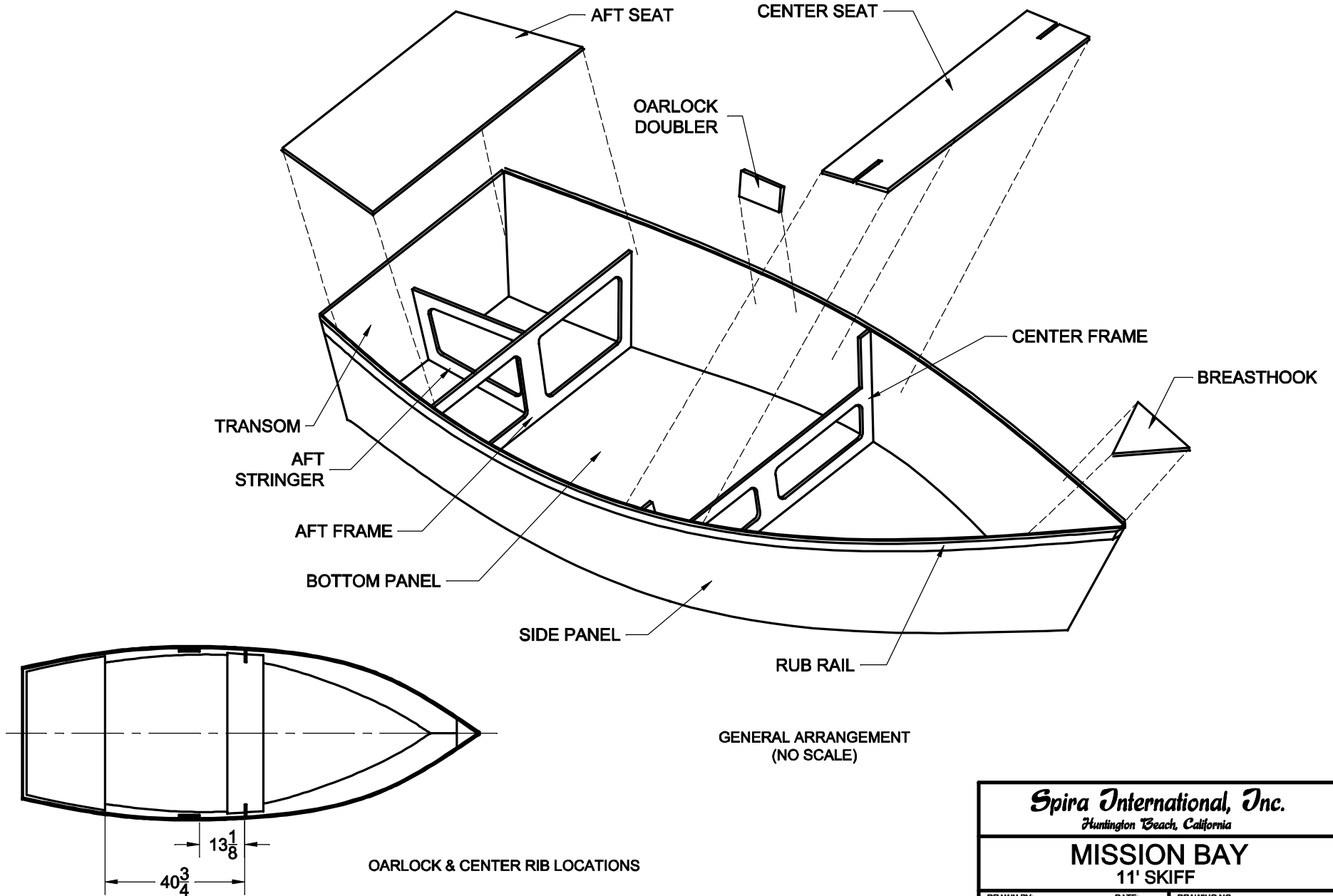
<i>Spira International, Inc.</i> Huntington Beach, California		
MISSION BAY 11' SKIFF		
DRAWN BY: J. SPIRA	DATE: 02/21/01	DRAWING NO. MISS01
SCALE 1/10	SHEET OF	

NOTICE

THIS DRAWING CONTAINS A PROPRIETARY DESIGN ASSIGNED TO SPIRA INTERNATIONAL, INC. ALL RIGHTS TO DUPLICATE, TRANSFER OR SELL THIS DESIGN ARE EXPRESSLY RESERVED. THE BUYER IS LICENSED TO BUILD ONE ASSEMBLY FROM THESE PLANS.

REVISIONS

ZONE	LTR	DESCRIPTION	DATE	APPROVED
	A	UPDATED TO NEW FORMAT	09/24/08	JJS



Spira International, Inc.
Huntington Beach, California

MISSION BAY
11' SKIFF

DRAWN BY: J. SPIRA	DATE: 02/23/01	DRAWING NO. MISS04
SCALE 1/20 & NOTED		SHEET OF