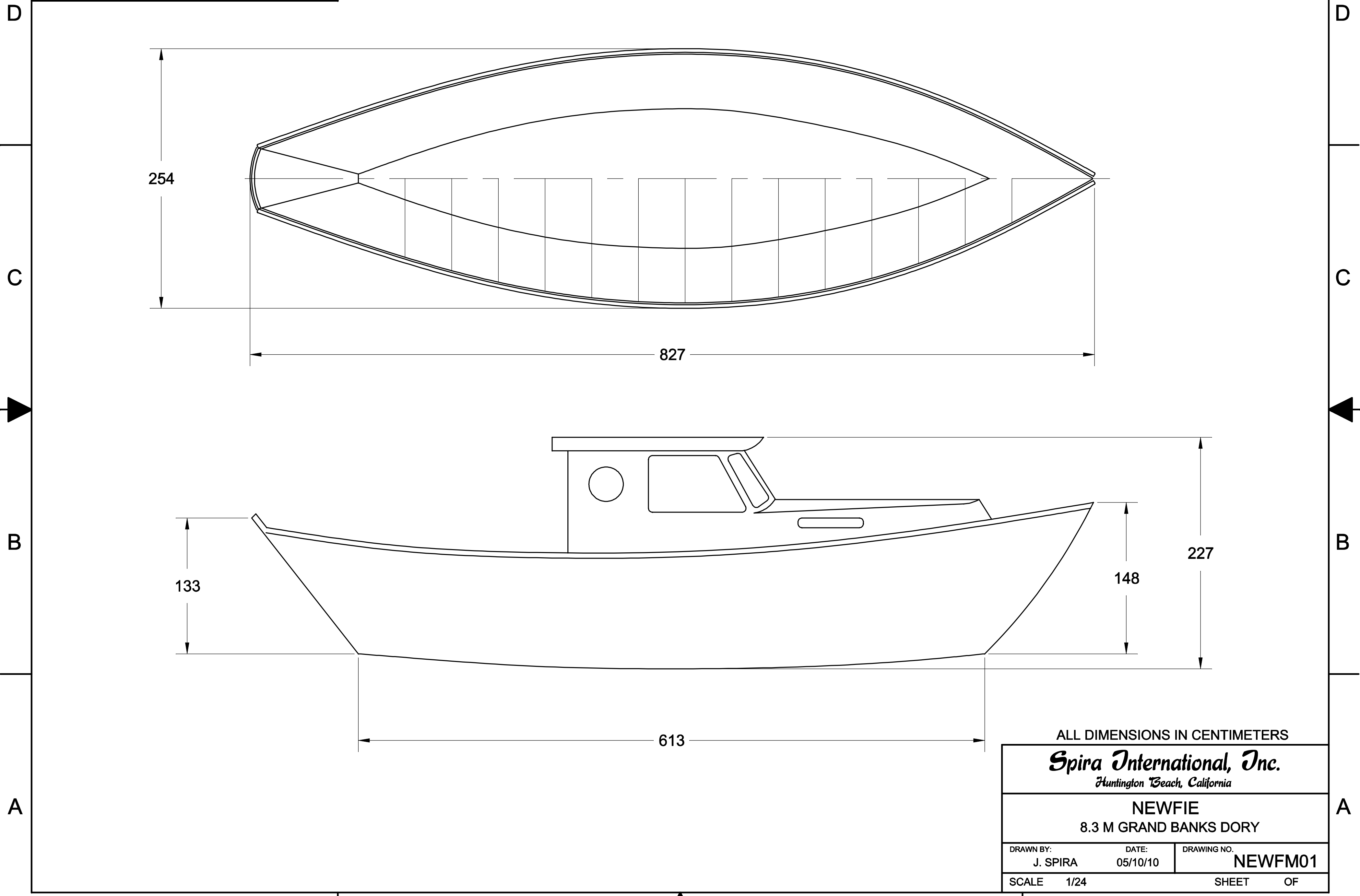


NOTICE  
 THIS DRAWING CONTAINS A PROPRIETARY DESIGN ASSIGNED TO SPIRA INTERNATIONAL, INC. ALL RIGHTS TO DUPLICATE, TRANSFER OR SELL THIS DESIGN ARE EXPRESSLY RESERVED. THE BUYER IS LICENSED TO BUILD ONE ASSEMBLY FROM THESE PLANS.

REVISIONS				
ZONE	LTR	DESCRIPTION	DATE	APPROVED



ALL DIMENSIONS IN CENTIMETERS

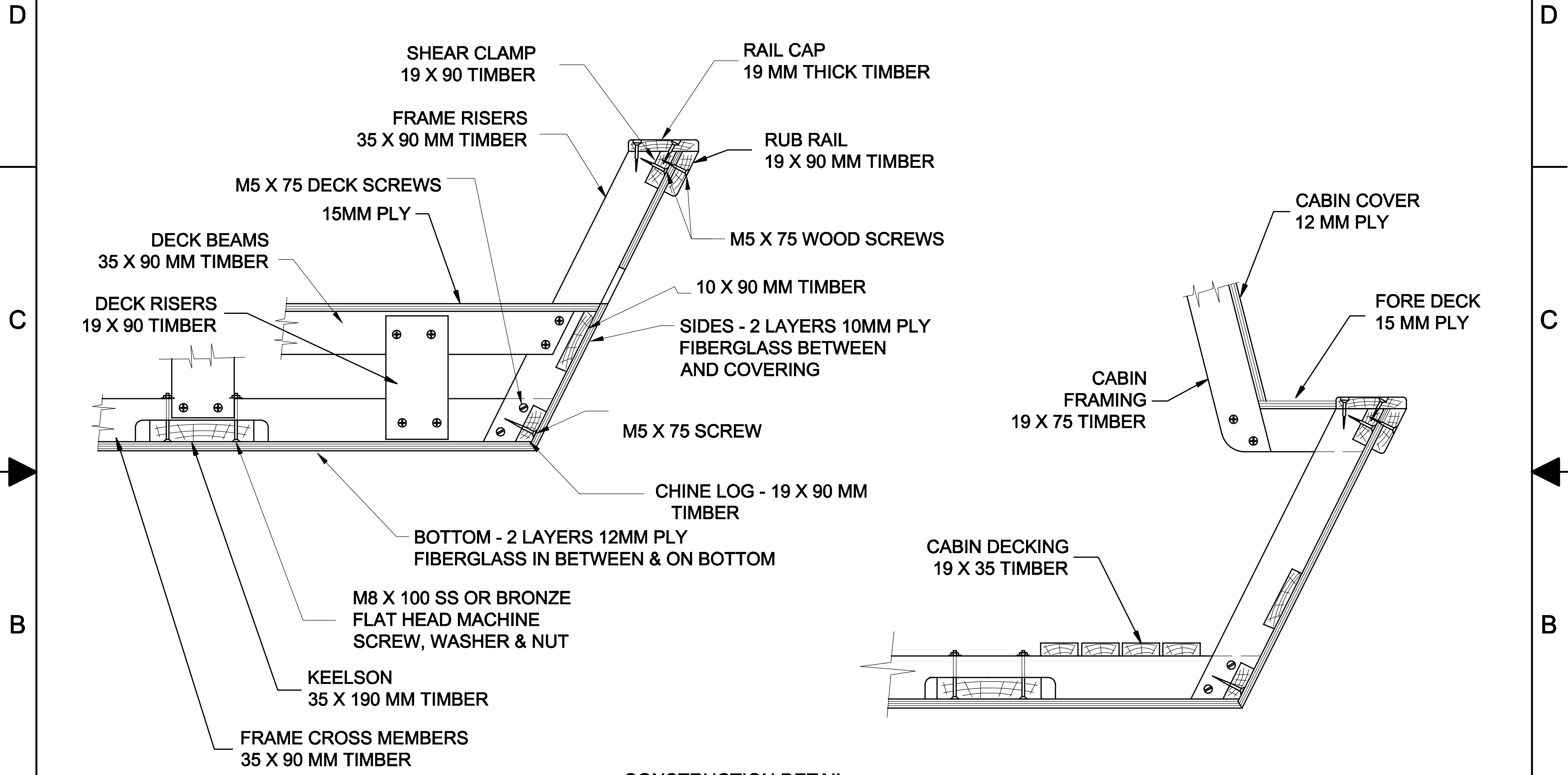
***Spira International, Inc.***  
*Huntington Beach, California*

**NEWFIE**  
**8.3 M GRAND BANKS DORY**

DRAWN BY: J. SPIRA	DATE: 05/10/10	DRAWING NO. <b>NEWFM01</b>
SCALE 1/24	SHEET OF	

**NOTICE**  
 THIS DRAWING CONTAINS A PROPRIETARY DESIGN ASSIGNED TO SPIRA INTERNATIONAL, INC. ALL RIGHTS TO DUPLICATE, TRANSFER OR USE ARE EXPRESSLY RESERVED BY SPIRA INTERNATIONAL. THE BUYER IS LICENSED TO BUILD ONE ASSEMBLY FROM THESE PLANS.

REVISIONS				
ZONE	LTR	DESCRIPTION	DATE	APPROVED
	A	REVISED AND UPDATED	01/11/12	JJS



**CONSTRUCTION DETAIL**  
 NO SCALE

**NOTES:**  
 1. YOU MAY SCARF TOGETHER SHORTER PIECES TO CREATE THE LONGITUDINAL ELEMENTS.

**Spira International, Inc.**  
 Huntington Beach, California

**NEWFIE**  
 8.3 M GRAND BANKS DORY

DRAWN BY: J. SPIRA	DATE: 05/10/10	DRAWING NO. <b>NEWFM02</b>
SCALE 1/24		SHEET OF