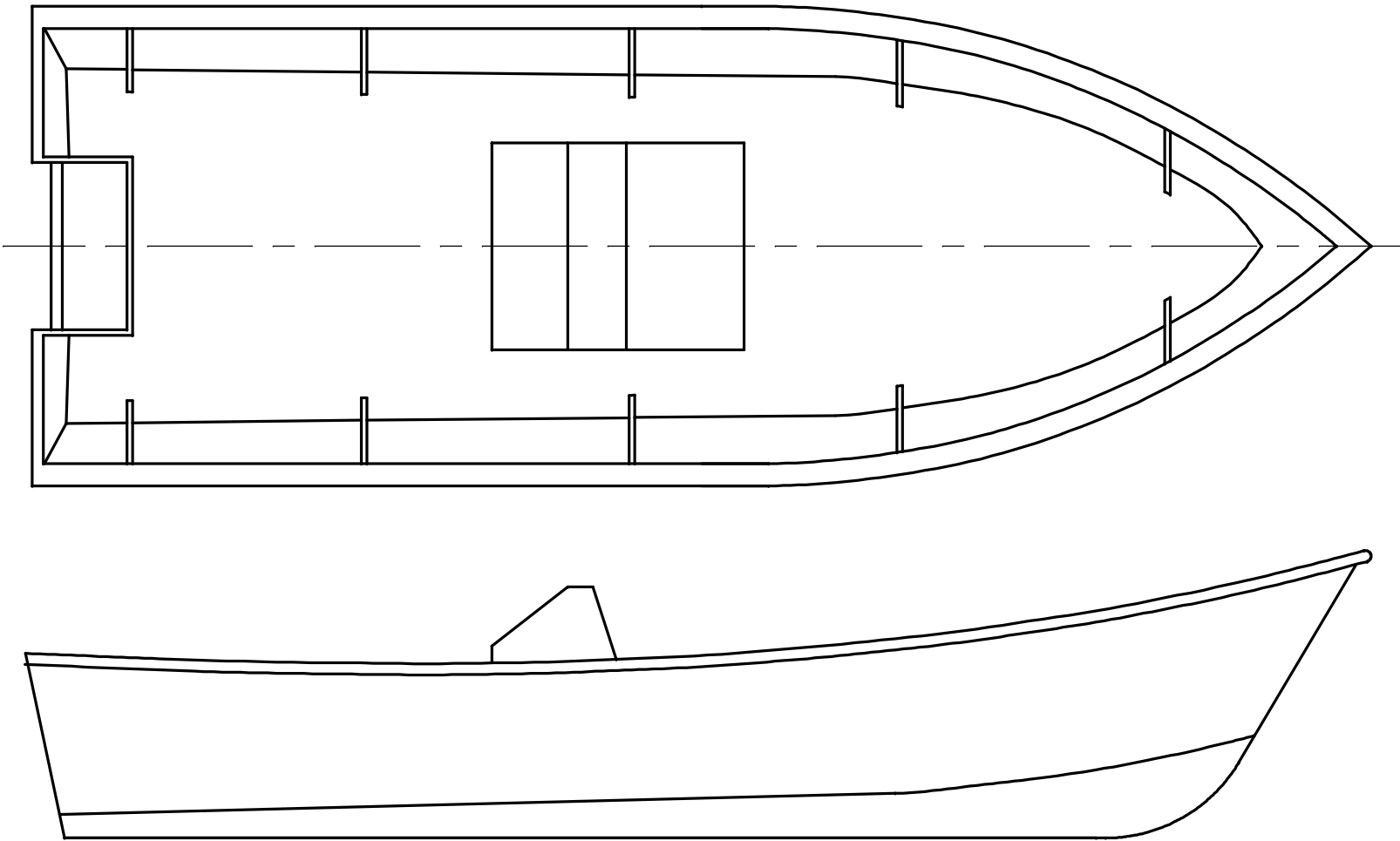


NOTICE
 THIS DRAWING CONTAINS A PROPRIETARY DESIGN ASSIGNED TO SPIRA INTERNATIONAL, INC. ALL RIGHTS TO DUPLICATE, TRANSFER OR SELL THIS DESIGN ARE EXPRESSLY RESERVED. THE BUYER IS LICENSED TO BUILD ONE ASSEMBLY FROM THESE PLANS.

REVISIONS				
ZONE	LTR	DESCRIPTION	DATE	APPROVED
	B	UPDATED TO NEW FORMAT	09/27/04	JJS

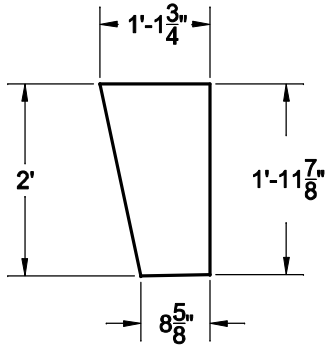


NEWPORTER	
LENGTH	16 0"
BEAM	5' 8"
FREEBOARD	42"

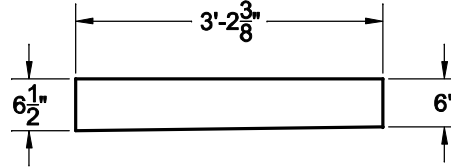
<i>Spira International, Inc.</i> Huntington Beach, California		
NEWPORTER 16' CENTER CONSOLE BOAT		
DRAWN BY: J. SPIRA	DATE: 11/07/01	DRAWING NO. NEWP01
SCALE 1" = 1'		SHEET OF

NOTICE
 THIS DRAWING CONTAINS A PROPRIETARY DESIGN ASSIGNED TO SPIRA INTERNATIONAL, INC. ALL RIGHTS TO DUPLICATE, TRANSFER OR SELL THIS DESIGN ARE EXPRESSLY RESERVED. THE BUYER IS LICENSED TO BUILD ONE ASSEMBLY FROM THESE PLANS.

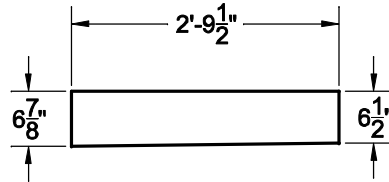
REVISIONS				
ZONE	LTR	DESCRIPTION	DATE	APPROVED
	B	UPDATED TO NEW FORMAT	09/27/08	JJS



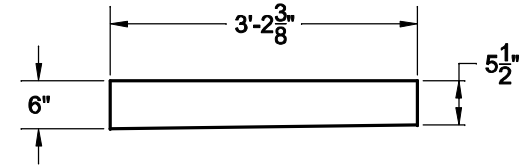
STRINGER 1
 2 REQ'D - 3/4 PLY



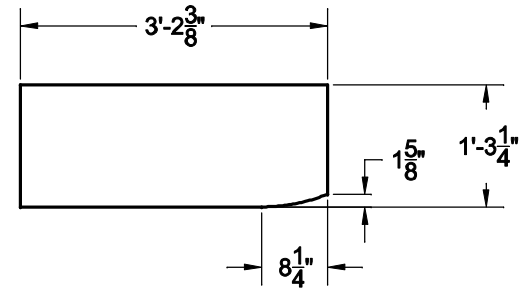
STRINGER 3
 2 REQ'D - 3/4 PLY



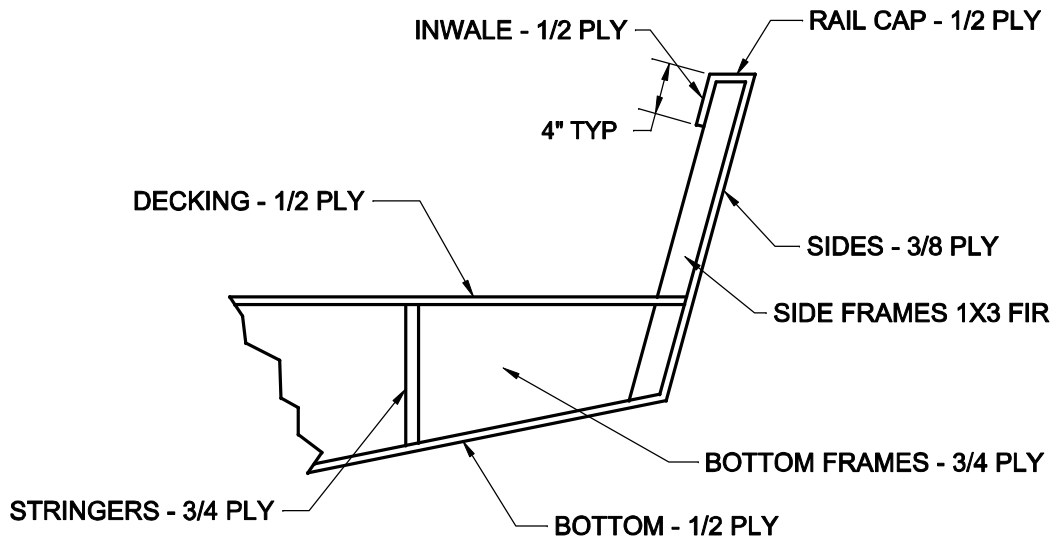
STRINGER 2
 2 REQ'D - 3/4 PLY



STRINGER 4
 2 REQ'D - 3/4 PLY



STRINGER 5
 1 REQ'D - 3/4 PLY



TYPICAL CONSTRUCTION METHOD

Spira International, Inc. Huntington Beach, California		
NEWPORTER FRAMING DETAILS		
DRAWN BY: J. SPIRA	DATE: 11/07/01	DRAWING NO. NEWP04
SCALE 1" = 1'		SHEET OF