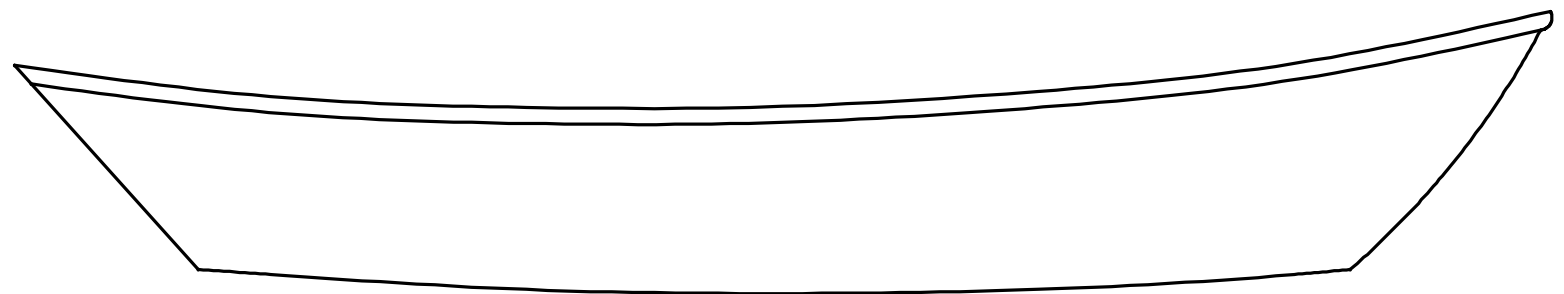
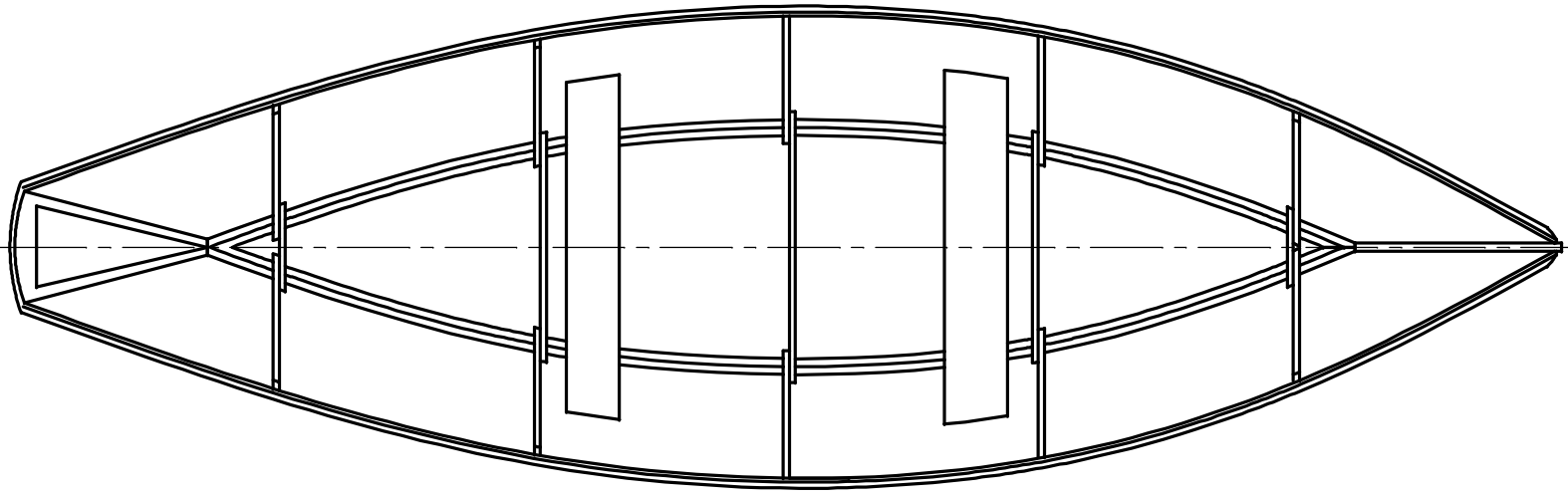


NOTICE  
 THIS DRAWING CONTAINS A PROPRIETARY DESIGN ASSIGNED TO SPIRA INTERNATIONAL, INC. ALL RIGHTS TO DUPLICATE, TRANSFER OR SELL THIS DESIGN ARE EXPRESSLY RESERVED. THE BUYER IS LICENSED TO BUILD ONE ASSEMBLY FROM THESE PLANS.

REVISIONS				
ZONE	LTR	DESCRIPTION	DATE	APPROVED
	A	UPDATED TO NEW FORMAT	09/28/08	JJS



SPECIFICATIONS	
LENGTH	4.92 M
BEAM	1.47 M
HEIGHT	0.89 M
DRAFT	0.09 M
WEIGHT	86 KG

ALL DIMENSIONS IN MILLIMETERS

**Spira International, Inc.**  
*Huntington Beach, California*

**NOVA SCOTIAN**  
 4.9 M GRAND BANKS DORY

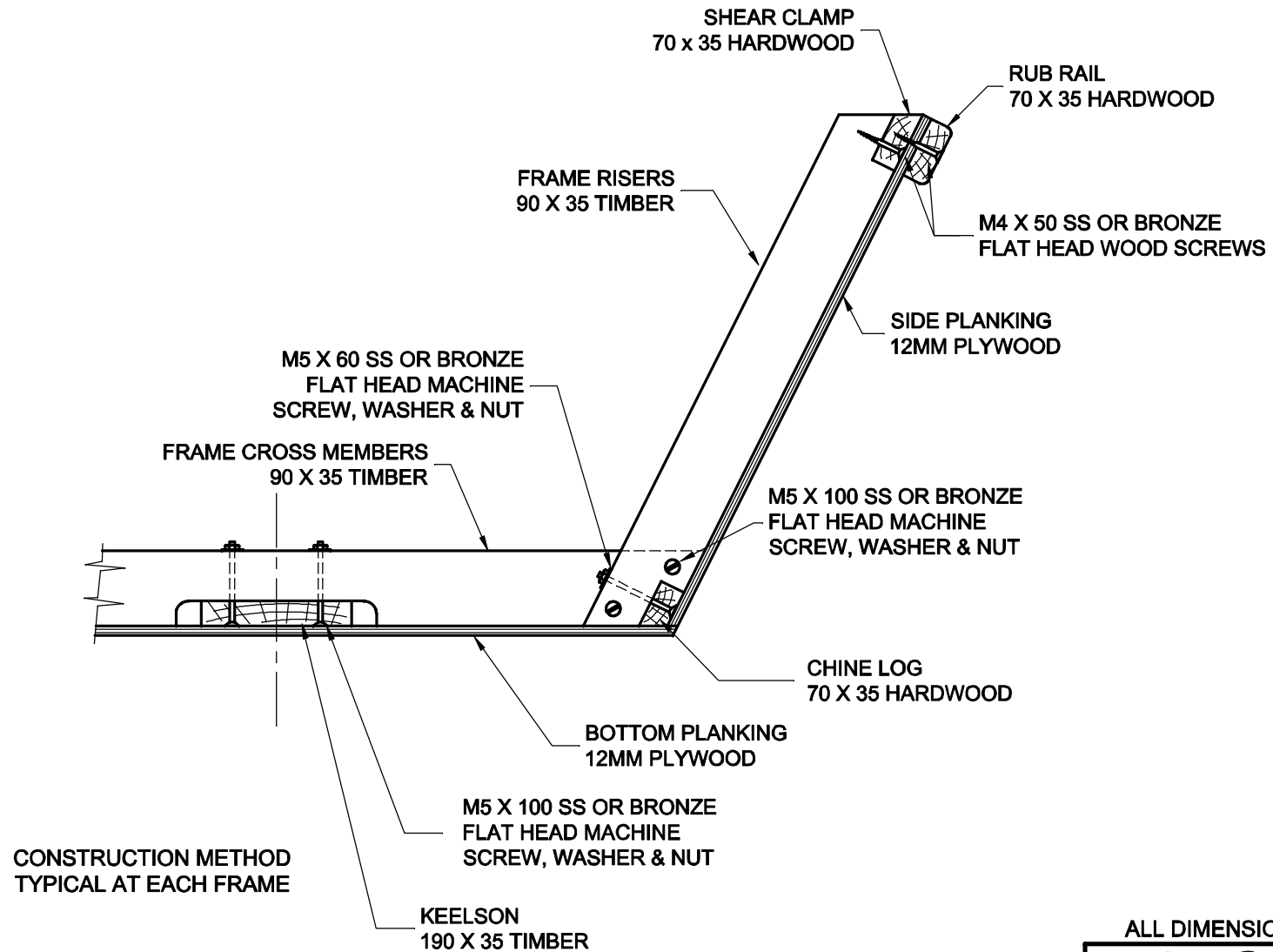
DRAWN BY: J. SPIRA	DATE: 10/13/05	DRAWING NO. NOVA01M
SCALE 1' = 1'		SHEET OF

**NOTICE**

THIS DRAWING CONTAINS A PROPRIETARY DESIGN ASSIGNED TO SPIRA INTERNATIONAL, INC. ALL RIGHTS TO DUPLICATE, TRANSFER OR SELL THIS DESIGN ARE EXPRESSLY RESERVED. THE BUYER IS LICENSED TO BUILD ONE ASSEMBLY FROM THESE PLANS.

**REVISIONS**

ZONE	LTR	DESCRIPTION	DATE	APPROVED
	A	UPDATED TO NEW FORMAT	09/28/08	JJS



ALL DIMENSIONS IN MILLIMETERS

**Spira International, Inc.**  
Huntington Beach, California

**NOVA SCOTIAN**  
4.9 M GRAND BANKS DORY

DRAWN BY: J. SPIRA	DATE: 10/13/05	DRAWING NO. NOVA03M
SCALE 1' = 1'		SHEET OF