

4

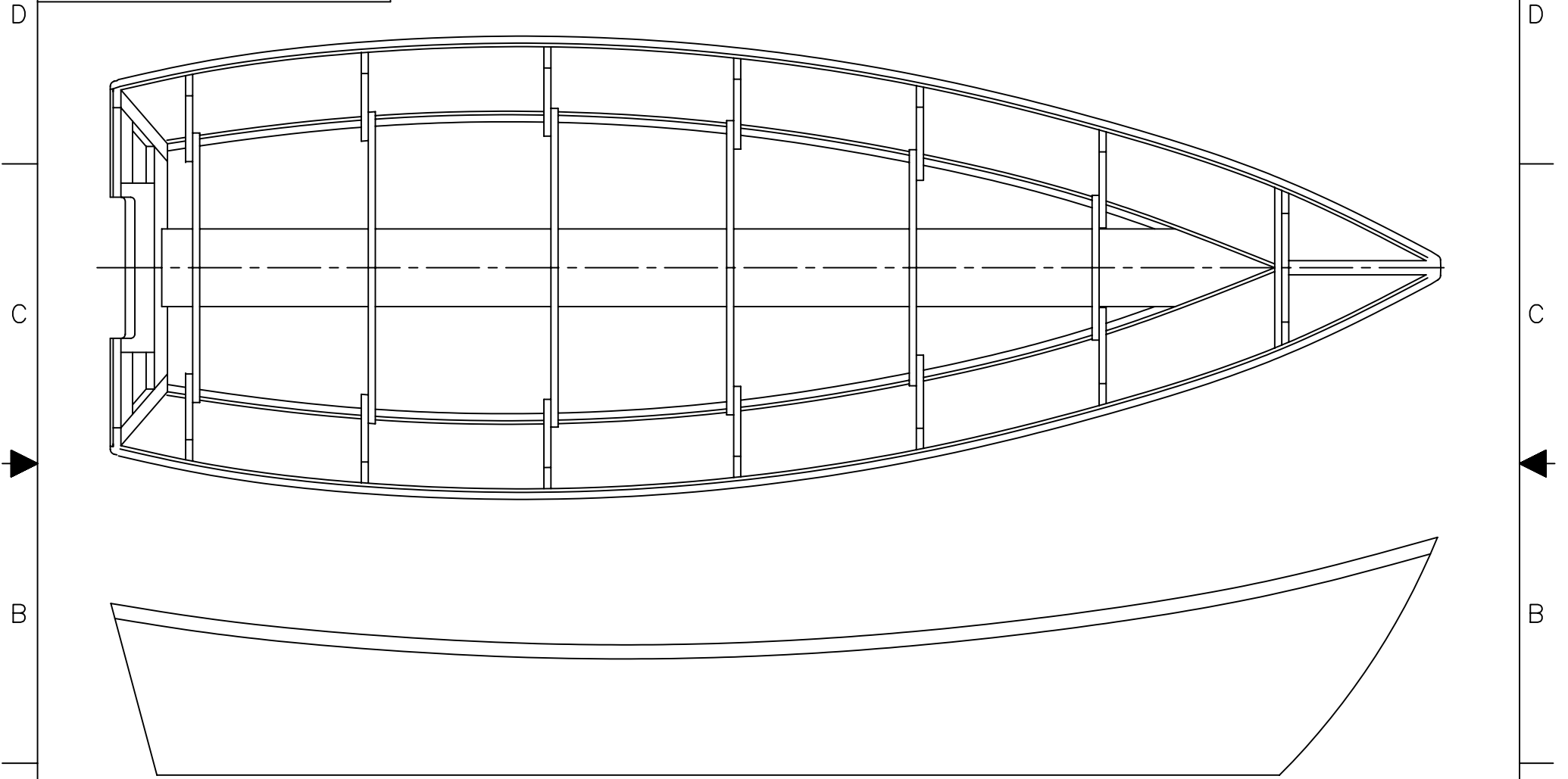
3

2

1

NOTICE
 THIS DRAWING CONTAINS A PROPRIETARY DESIGN ASSIGNED TO SPIRA INTERNATIONAL, INC. ALL RIGHTS TO DUPLICATE, TRANSFER OR SELL THIS DESIGN ARE EXPRESSLY RESERVED. THE BUYER IS LICENSED TO BUILD ONE ASSEMBLY FROM THESE PLANS.

| REVISIONS | | | | |
|-----------|-----|-------------|---------------|----------|
| ZONE | LTR | DESCRIPTION | DATE YR/MO/DA | APPROVED |
| | | | | |



| SPECIFICATIONS | |
|----------------|---------|
| LENGTH | 16' 1" |
| BEAM | 5' 4" |
| HEIGHT | 2' 10" |
| DRAFT | 0' 3" |
| WEIGHT | 290 LBS |

Spira International, Inc.
 Huntington Beach, California

OYSTERMAN
 16' CAROLINA DORY

| | | |
|-----------------------|------------------|-----------------------|
| DRAWN BY: J. SPIRA | DATE: 1/05/00 | DRAWING NO. OYST01 |
| SCALE 1/10 | | SHEET OF |

4

3

2

1

A

A

4

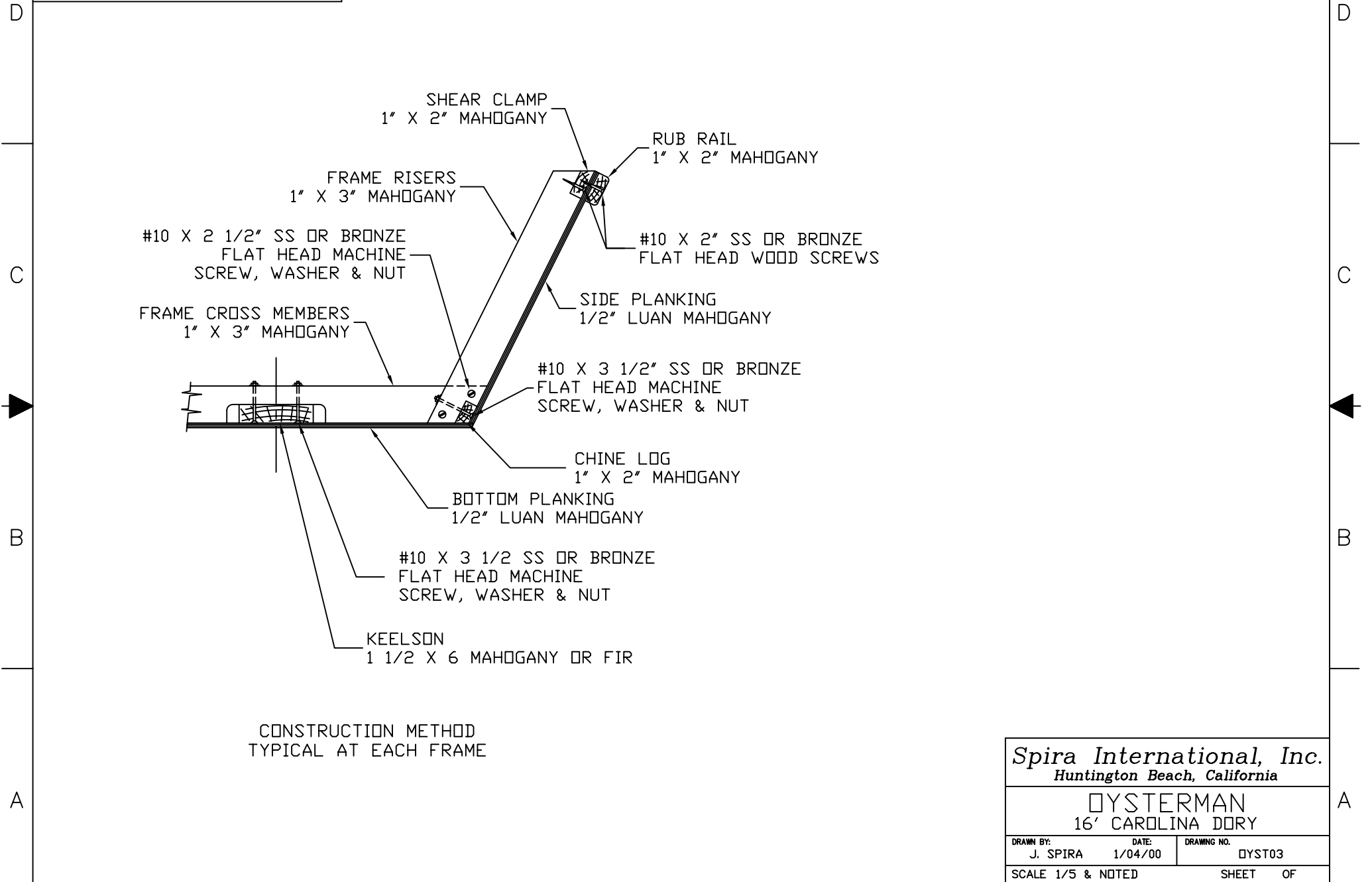
3

2

1

NOTICE
 THIS DRAWING CONTAINS A PROPRIETARY DESIGN ASSIGNED TO SPIRA INTERNATIONAL, INC. ALL RIGHTS TO DUPLICATE, TRANSFER OR SELL THIS DESIGN ARE EXPRESSLY RESERVED. THE BUYER IS LICENSED TO BUILD ONE ASSEMBLY FROM THESE PLANS.

| REVISIONS | | | | |
|-----------|-----|-------------|---------------|----------|
| ZONE | LTR | DESCRIPTION | DATE YR/MO/DA | APPROVED |
| | | | | |



Spira International, Inc.
 Huntington Beach, California

OYSTERMAN
 16' CAROLINA DORY

| | | |
|-----------------------|------------------|-----------------------|
| DRAWN BY: J. SPIRA | DATE: 1/04/00 | DRAWING NO. OYST03 |
| SCALE 1/5 & NOTED | | SHEET OF |

4

3

2

1