

4

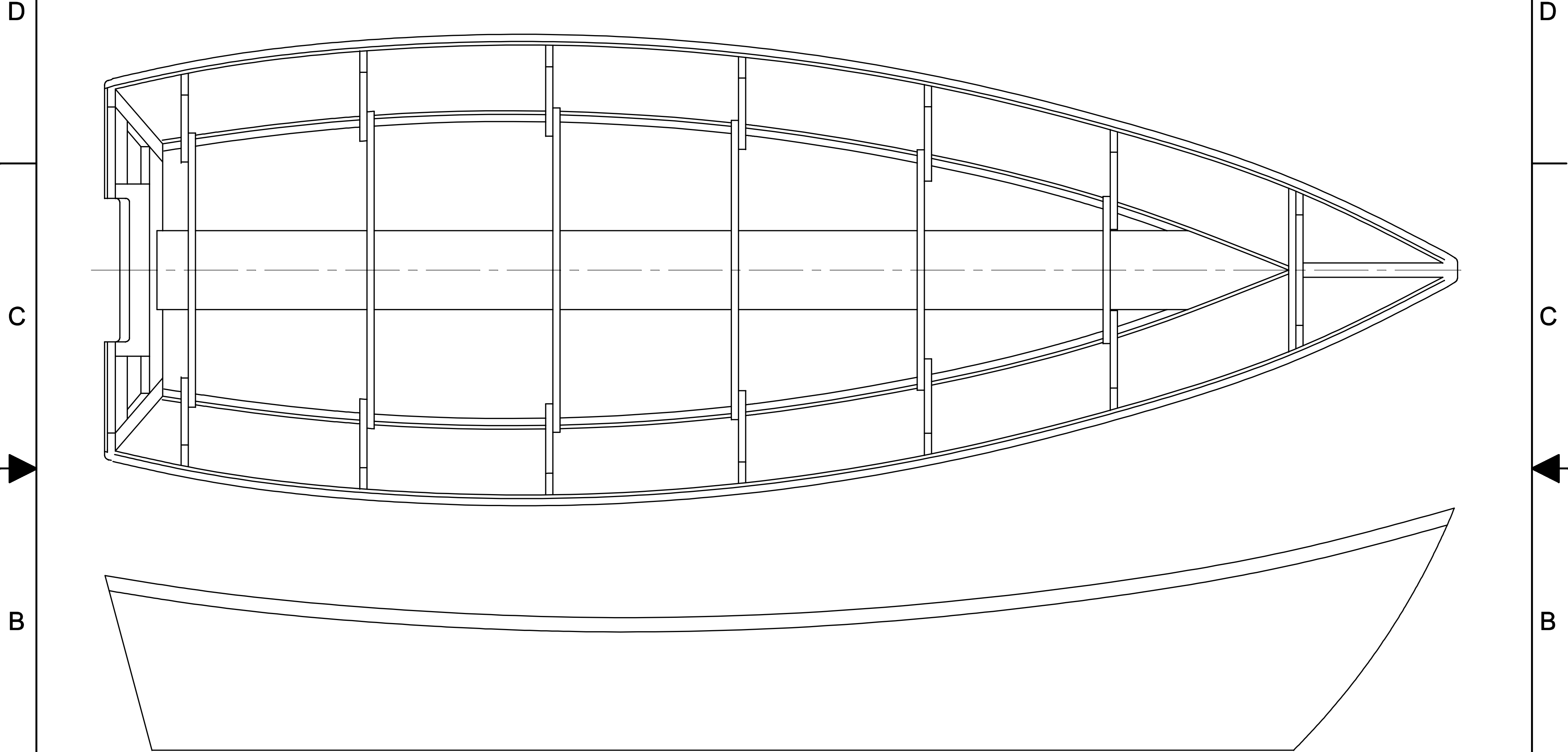
3

2

1

NOTICE
 THIS DRAWING CONTAINS A PROPRIETARY DESIGN ASSIGNED TO SPIRA INTERNATIONAL, INC. ALL RIGHTS TO DUPLICATE, TRANSFER OR SELL THIS DESIGN ARE EXPRESSLY RESERVED. THE BUYER IS LICENSED TO BUILD ONE ASSEMBLY FROM THESE PLANS.

REVISIONS				
ZONE	LTR	DESCRIPTION	DATE	APPROVED
	A	UPDATED TO NEW FORMAT	09/29/08	JJS



SPECIFICATIONS	
LENGTH	16' 1"
BEAM	5' 4"
HEIGHT	2' 10"
DRAFT	0' 3"
WEIGHT	290 LBS

Spira International, Inc.
Huntington Beach, California

OYSTERMAN
 16' CAROLINA DORY

DRAWN BY: J. SPIRA	DATE: 1/05/00	DRAWING NO. OYST01
SCALE 1/10		SHEET OF

4

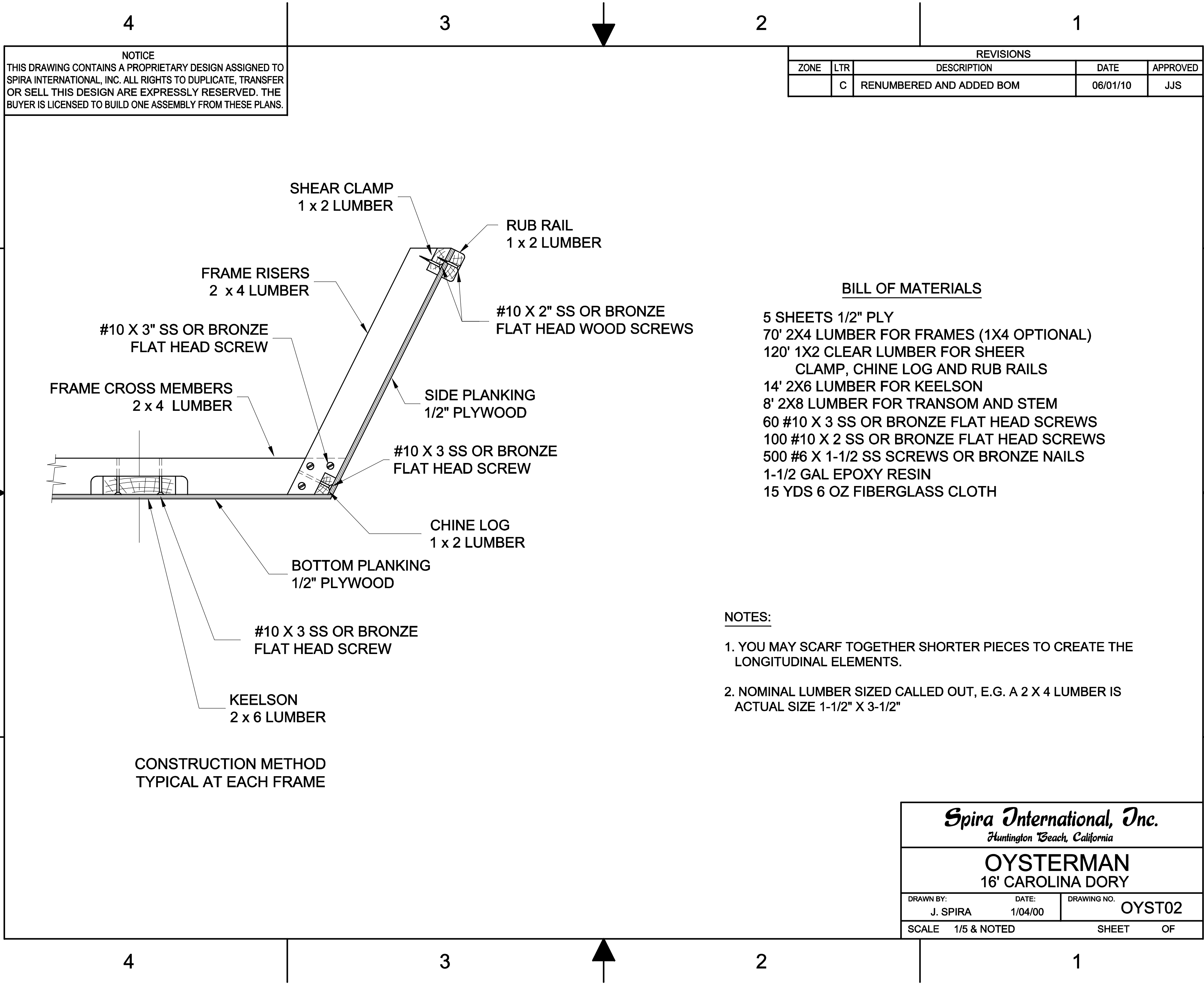
3

2

1

A

A



NOTICE
 THIS DRAWING CONTAINS A PROPRIETARY DESIGN ASSIGNED TO SPIRA INTERNATIONAL, INC. ALL RIGHTS TO DUPLICATE, TRANSFER OR SELL THIS DESIGN ARE EXPRESSLY RESERVED. THE BUYER IS LICENSED TO BUILD ONE ASSEMBLY FROM THESE PLANS.

REVISIONS				
ZONE	LTR	DESCRIPTION	DATE	APPROVED
	C	RENUMBERED AND ADDED BOM	06/01/10	JJS

BILL OF MATERIALS

- 5 SHEETS 1/2" PLY
- 70' 2X4 LUMBER FOR FRAMES (1X4 OPTIONAL)
- 120' 1X2 CLEAR LUMBER FOR SHEER CLAMP, CHINE LOG AND RUB RAILS
- 14' 2X6 LUMBER FOR KEELSON
- 8' 2X8 LUMBER FOR TRANSOM AND STEM
- 60 #10 X 3 SS OR BRONZE FLAT HEAD SCREWS
- 100 #10 X 2 SS OR BRONZE FLAT HEAD SCREWS
- 500 #6 X 1-1/2 SS SCREWS OR BRONZE NAILS
- 1-1/2 GAL EPOXY RESIN
- 15 YDS 6 OZ FIBERGLASS CLOTH

NOTES:

1. YOU MAY SCARF TOGETHER SHORTER PIECES TO CREATE THE LONGITUDINAL ELEMENTS.
2. NOMINAL LUMBER SIZED CALLED OUT, E.G. A 2 X 4 LUMBER IS ACTUAL SIZE 1-1/2" X 3-1/2"

CONSTRUCTION METHOD
 TYPICAL AT EACH FRAME

Spira International, Inc.
Huntington Beach, California

OYSTERMAN
 16' CAROLINA DORY

DRAWN BY: J. SPIRA	DATE: 1/04/00	DRAWING NO. OYST02
SCALE 1/5 & NOTED		SHEET OF