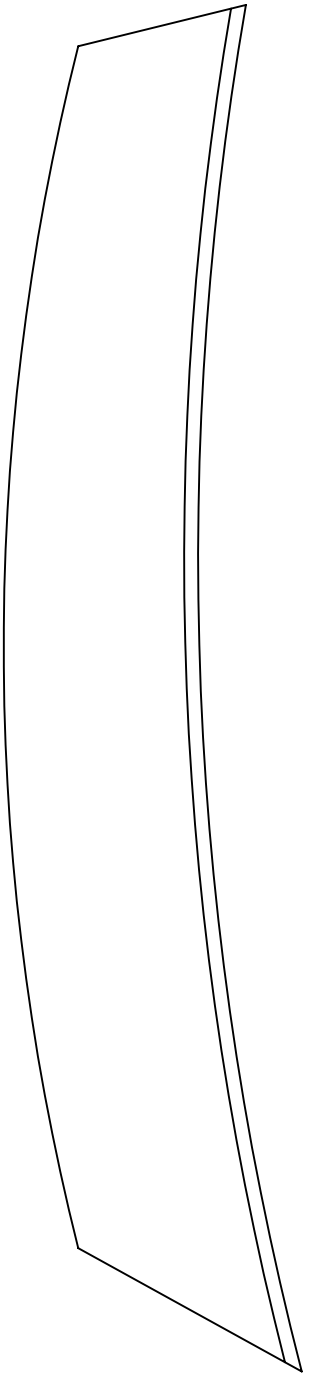
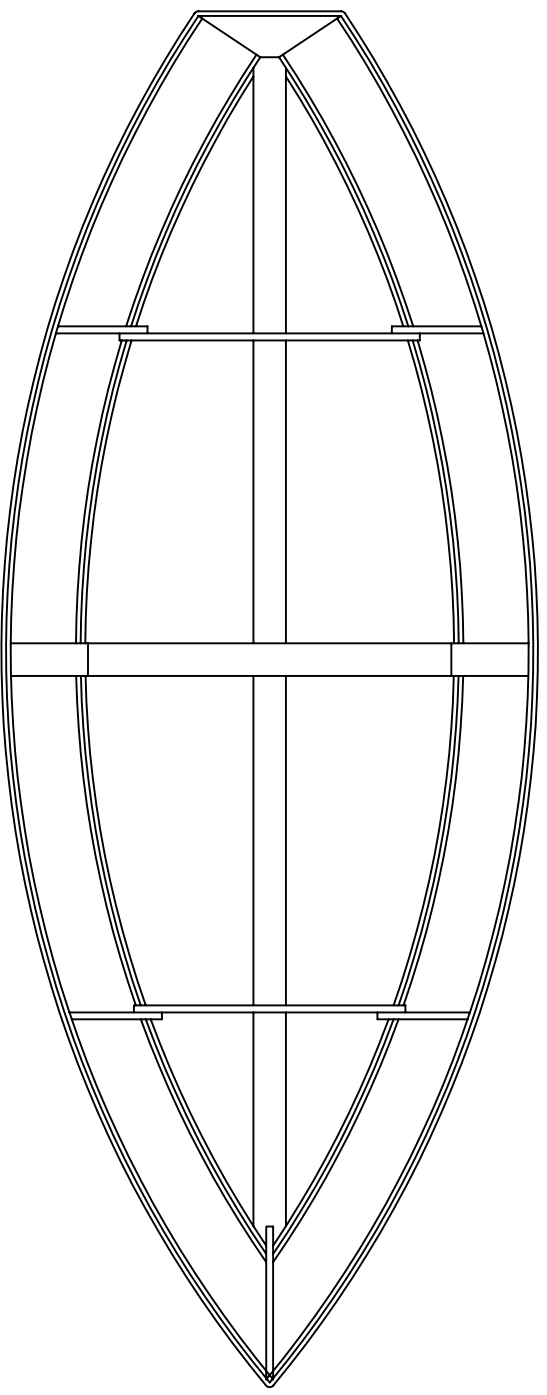


NOTICE
 THIS DRAWING CONTAINS A PROPRIETARY DESIGN ASSIGNED TO SPIRA INTERNATIONAL, INC. ALL RIGHTS TO DUPLICATE, TRANSFER OR SELL THIS DESIGN ARE EXPRESSLY RESERVED. THE BUYER IS LICENSED TO BUILD ONE ASSEMBLY FROM THESE PLANS.

REVISIONS			
ZONE	LTR	DESCRIPTION	DATE R/W/D/A/ APPROVED



SPECIFICATIONS	
LENGTH	12' 4"
BEAM	4' 8"
HEIGHT	2' 10"
DRAFT	0' 4"
WEIGHT	80 LBS

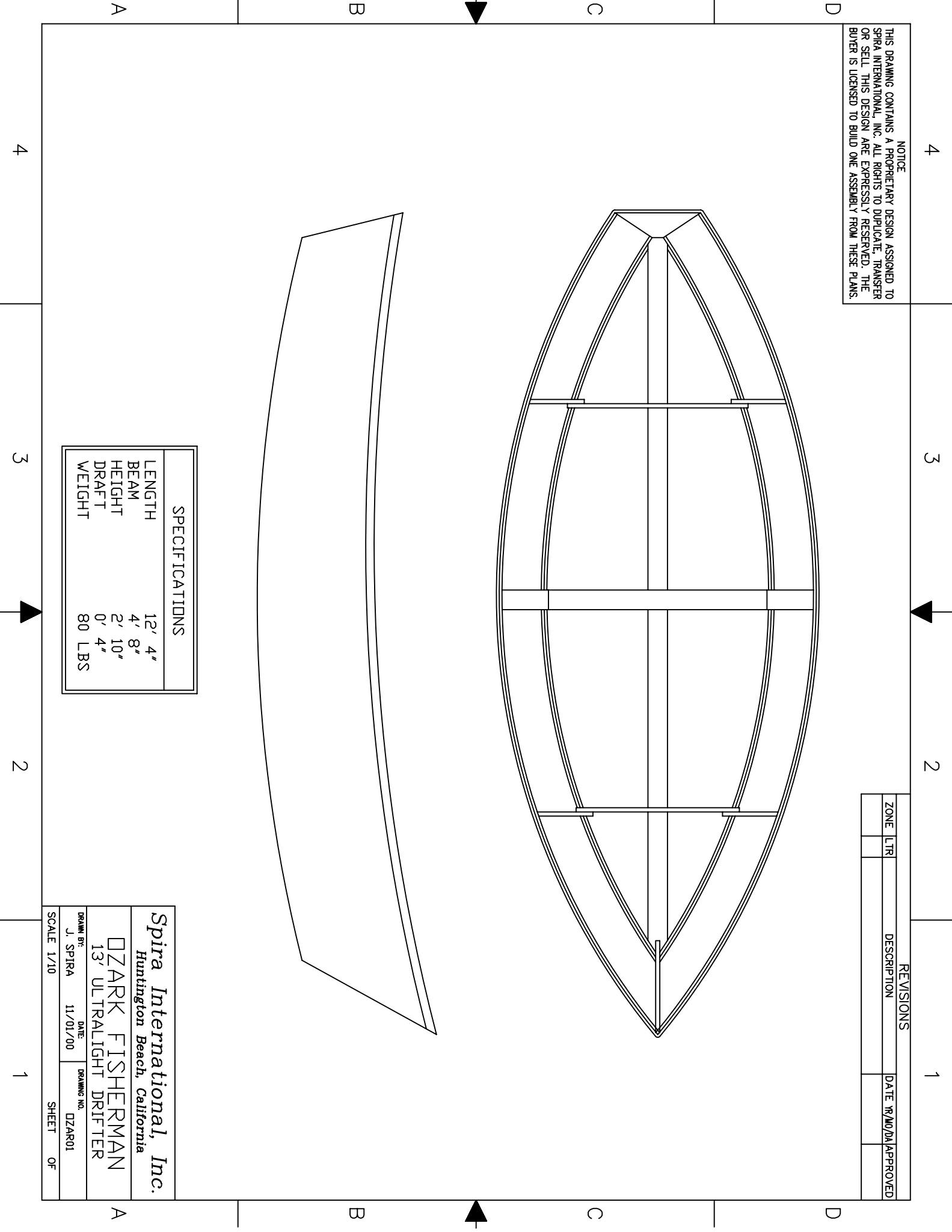
Spira International, Inc.
Huntington Beach, California

DZARK FISHERMAN
 13' ULTRALIGHT DRIFTER

SCALE 1/10

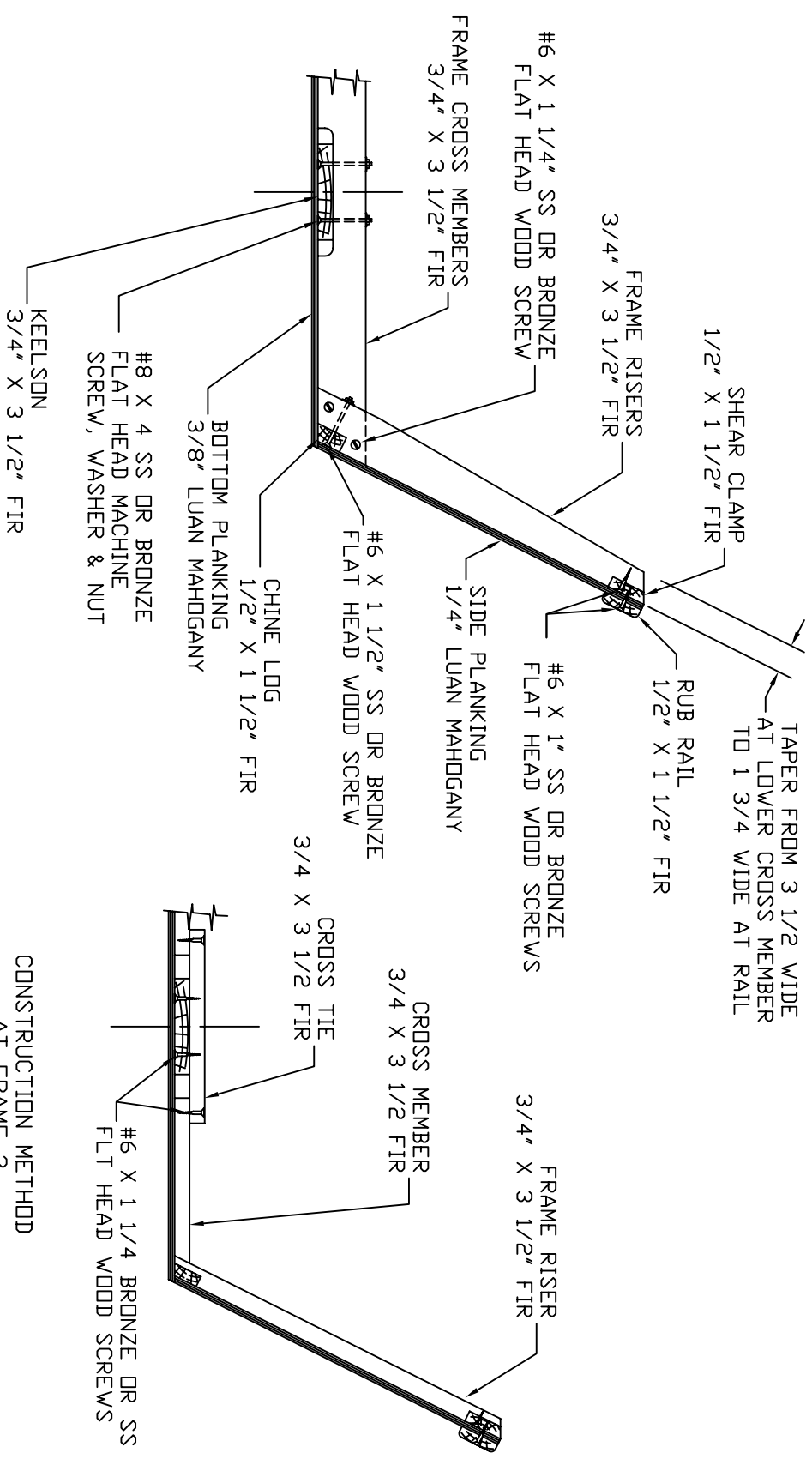
DRAWN BY: J. SPIRA DATE: 11/01/00 DRAWING NO. DZAR01

SHEET 0F



NOTICE
THIS DRAWING CONTAINS A PROPRIETARY DESIGN ASSIGNED TO SPIRA INTERNATIONAL, INC. ALL RIGHTS TO DUPLICATE, TRANSFER OR SELL THIS DESIGN ARE EXPRESSLY RESERVED. THE BUYER IS LICENSED TO BUILD ONE ASSEMBLY FROM THESE PLANS.

REVISIONS			
ZONE	LTR	DESCRIPTION	DATE #/MO/YR APPROVED



CONSTRUCTION METHOD
TYPICAL AT FRAMES 1 & 3

CONSTRUCTION METHOD
AT FRAME 2

Spira International, Inc.
Huntington Beach, California

DZARK FISHERMAN
13' DRIFTBOAT

DRAWN BY: J. SPIRA
DATE: 11/04/00
DRAWING NO. DZAR03
SCALE 1/5" & NOTED
SHEET OF

Ozark Fisherman Bill of materials

2 - 4' x 8' sheet 1/4" thick lauan plywood for sides
1 - 4' x 8' sheet 3/8 inch lauan plywood for bottom
6 - 16' long 1/2" x 1-1/2" clear pine (or fir) molding for rub rail, chine log & sheer clamp
32 ft - 3/4" x 3 1/2" clear fir for frames (random lengths)
12 ft - 3/4" x 3 1/2" clear fir for keelson (one piece)
3/8 plywood and fir 1x2 furring strips for optional seats
2 dozen #6 x 1 1/4" stainless steel wood screws
1 - gallon epoxy
A dozen or so inexpensive disposable paint brushes of various widths
Rubber gloves
Respirators (for sanding dust) & safety glasses

In addition, for the strongback and frame jig, you'll need the following materials:

1 - 14' fir 2x6
4 - 8' 2x4 studs
1/2 sheet (2' x 4') 1/2" ply
Some scraps of 1x2 furring strip
Handful of 16d box nails
Handful of 2d box nails
Woodworking (or white) glue