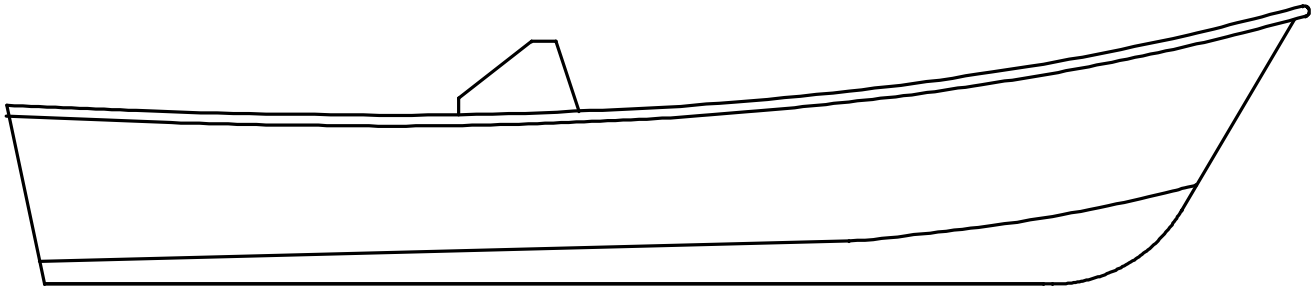
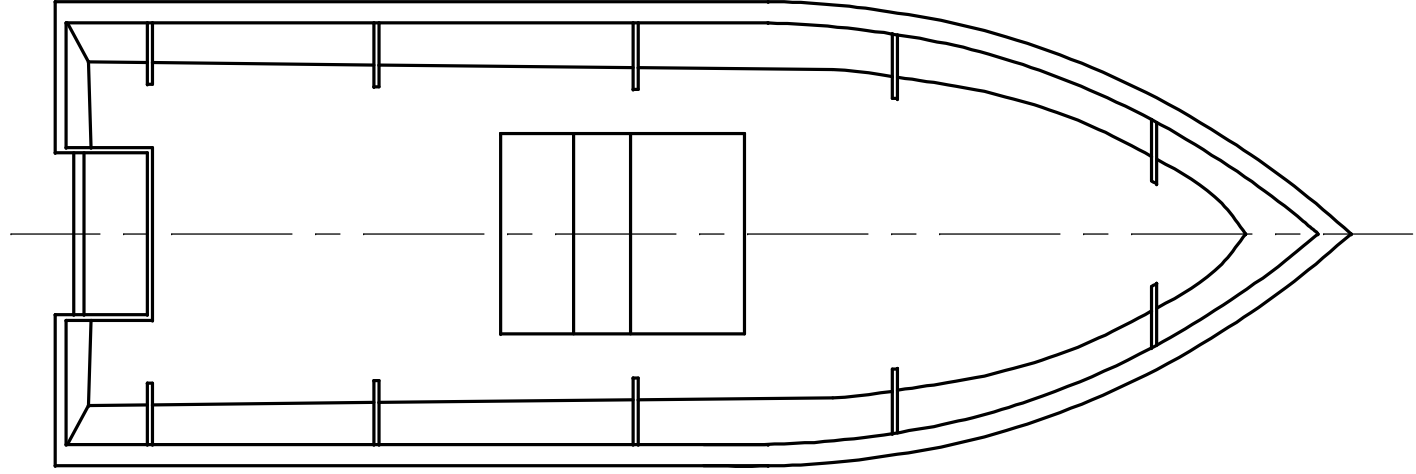


**NOTICE**  
 THIS DRAWING CONTAINS A PROPRIETARY DESIGN ASSIGNED TO SPIRA INTERNATIONAL, INC. ALL RIGHTS TO DUPLICATE, TRANSFER OR SELL THIS DESIGN ARE EXPRESSLY RESERVED. THE BUYER IS LICENSED TO BUILD ONE ASSEMBLY FROM THESE PLANS.

REVISIONS				
ZONE	LTR	DESCRIPTION	DATE	APPROVED
	B	UPDATED TO NEW FORMAT	01/07/09	JJS

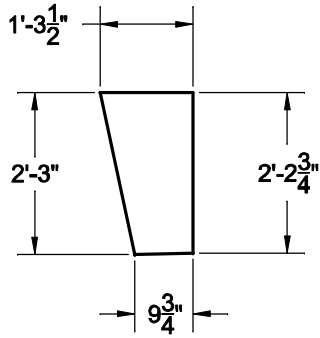


<b>SAN DIEGAN</b>	
LENGTH	18' 0"
BEAM	6' 6"

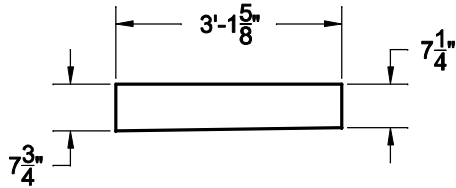
<i><b>Spira International, Inc.</b></i> Huntington Beach, California		
<b>SAN DIEGAN</b> VEE BOTTOM FISHING BOAT		
DRAWN BY: J. SPIRA	DATE: 04/09/02	DRAWING NO. SAND01
SCALE 3/4" = 1'	SHEET OF	

NOTICE  
 THIS DRAWING CONTAINS A PROPRIETARY DESIGN ASSIGNED TO SPIRA INTERNATIONAL, INC. ALL RIGHTS TO DUPLICATE, TRANSFER OR SELL THIS DESIGN ARE EXPRESSLY RESERVED. THE BUYER IS LICENSED TO BUILD ONE ASSEMBLY FROM THESE PLANS.

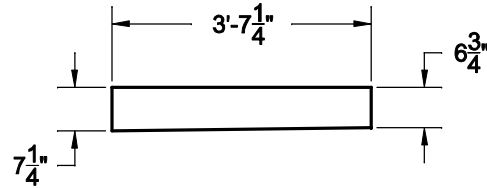
REVISIONS				
ZONE	LTR	DESCRIPTION	DATE	APPROVED
	B	UPDATED TO NEW FORMAT	01/07/09	JJS



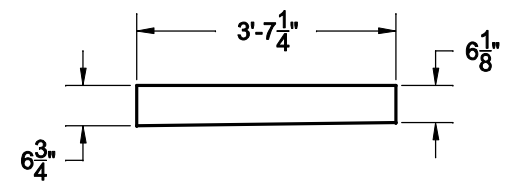
STRINGER 1  
 2 REQ'D - 3/4 PLY



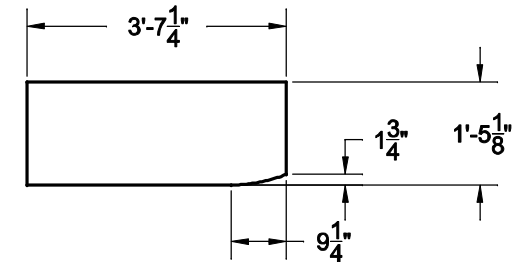
STRINGER 2  
 2 REQ'D - 3/4 PLY



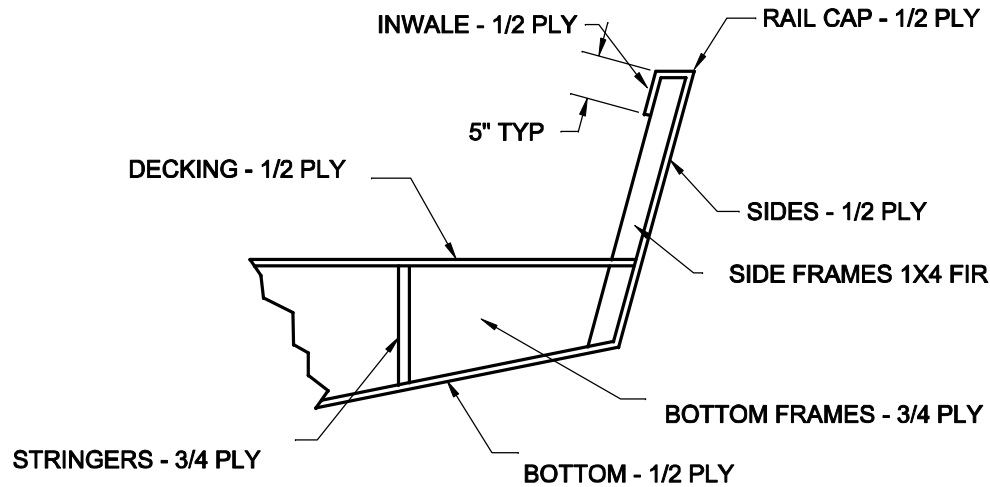
STRINGER 3  
 2 REQ'D - 3/4 PLY



STRINGER 4  
 2 REQ'D - 3/4 PLY



STRINGER 5  
 1 REQ'D - 3/4 PLY



TYPICAL CONSTRUCTION METHOD

<b>Spira International, Inc.</b> <i>Huntington Beach, California</i>		
<b>SAN DIEGAN</b> FRAMING DETAILS		
DRAWN BY: J. SPIRA	DATE: 04/09/02	DRAWING NO. SAND04
SCALE 3/4" = 1'		SHEET OF