

4

3

2

1

NOTICE
 THIS DRAWING CONTAINS A PROPRIETARY DESIGN ASSIGNED TO SPIRA INTERNATIONAL, INC. ALL RIGHTS TO DUPLICATE, TRANSFER OR SELL THIS DESIGN ARE EXPRESSLY RESERVED. THE BUYER IS LICENSED TO BUILD ONE ASSEMBLY FROM THESE PLANS.

REVISIONS				
ZONE	LTR	DESCRIPTION	DATE YR/MO/DA	APPROVED
	A	REVISED & UPDATED	07/07/04	JJS

D

D

C

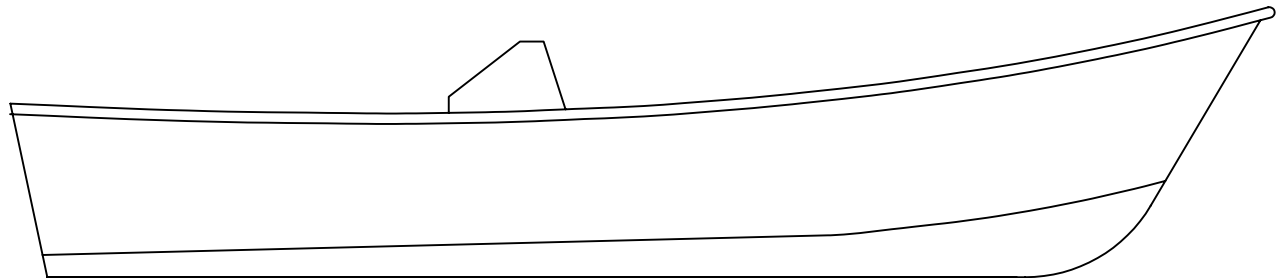
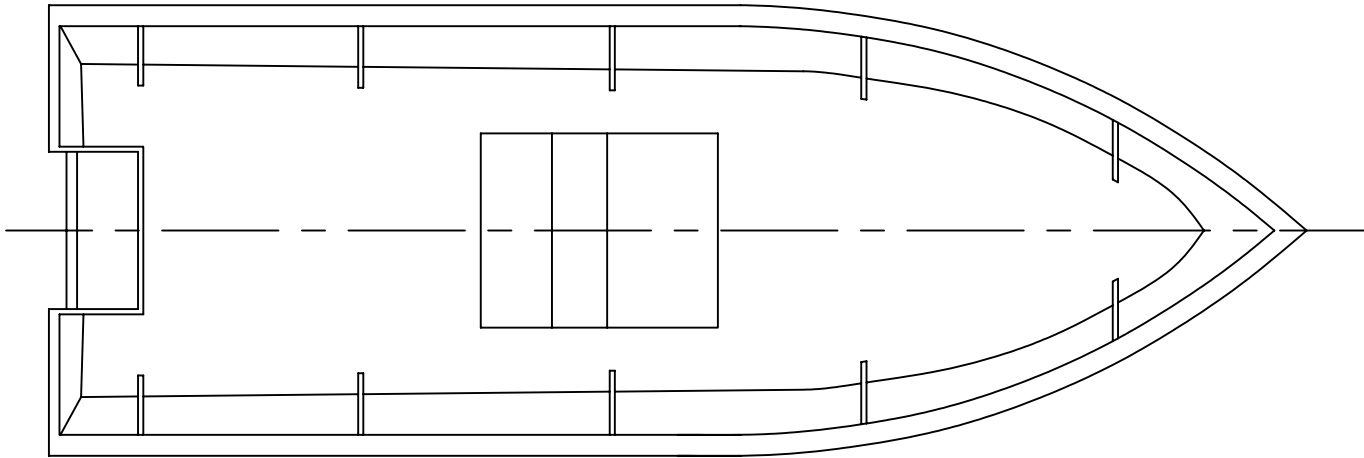
C

B

B

A

A



SAN DIEGAN	
LENGTH	18' 0"
BEAM	6' 6"

Spira International, Inc.
 Huntington Beach, California

SAN DIEGAN VEE BOTTOM FISHING BOAT		
DRAWN BY: J. SPIRA	DATE: 04/09/02	DRAWING NO. SAND01
SCALE 3/4" = 1'		SHEET OF

4

3

2

1

4

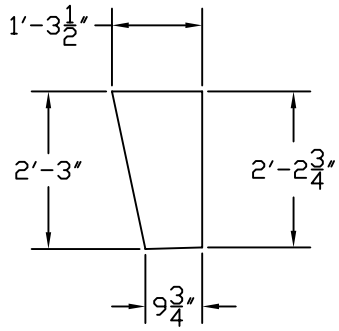
3

2

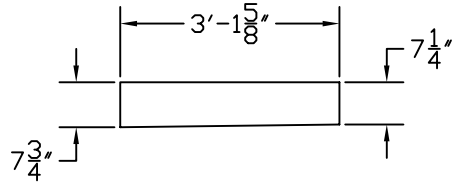
1

NOTICE
 THIS DRAWING CONTAINS A PROPRIETARY DESIGN ASSIGNED TO SPIRA INTERNATIONAL, INC. ALL RIGHTS TO DUPLICATE, TRANSFER OR SELL THIS DESIGN ARE EXPRESSLY RESERVED. THE BUYER IS LICENSED TO BUILD ONE ASSEMBLY FROM THESE PLANS.

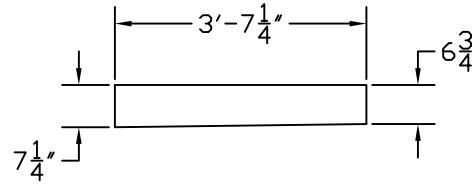
REVISIONS				
ZONE	LTR	DESCRIPTION	DATE YR/MO/DA	APPROVED
	A	REVISED & UPDATED	07/07/04	JJS



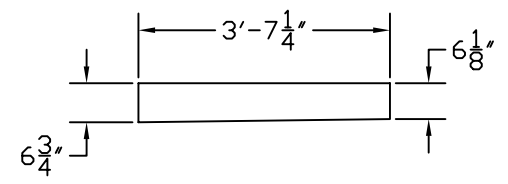
STRINGER 1
 2 REQ'D - 3/4 PLY



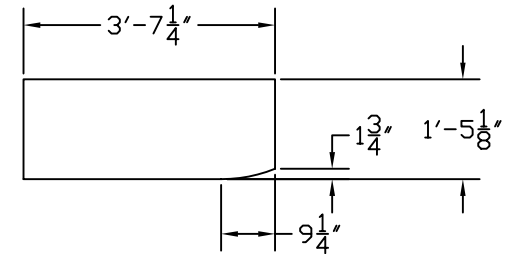
STRINGER 2
 2 REQ'D - 3/4 PLY



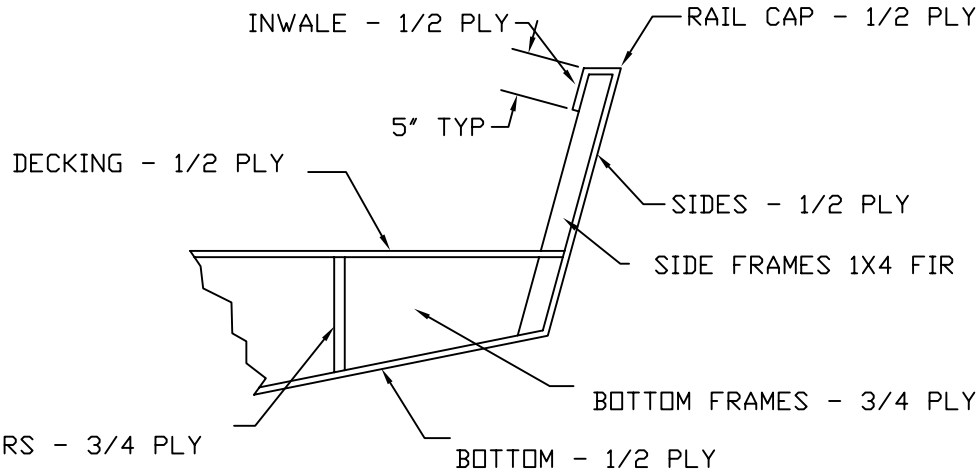
STRINGER 3
 2 REQ'D - 3/4 PLY



STRINGER 4
 2 REQ'D - 3/4 PLY



STRINGER 5
 1 REQ'D - 3/4 PLY



TYPICAL CONSTRUCTION METHOD

Spira International, Inc.
 Huntington Beach, California

**SAN DIEGAN
 FRAMING DETAILS**

DRAWN BY: J. SPIRA DATE: 04/09/02 DRAWING NO. SAND04
 SCALE 3/4" = 1' SHEET OF

4

3

2

1