

4

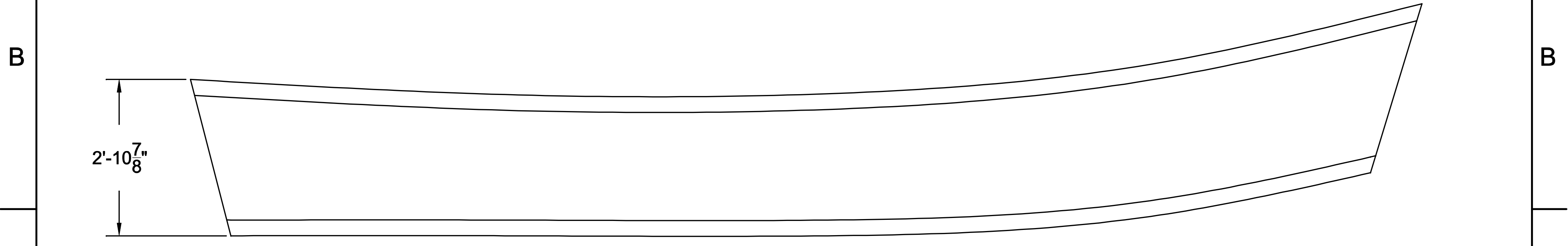
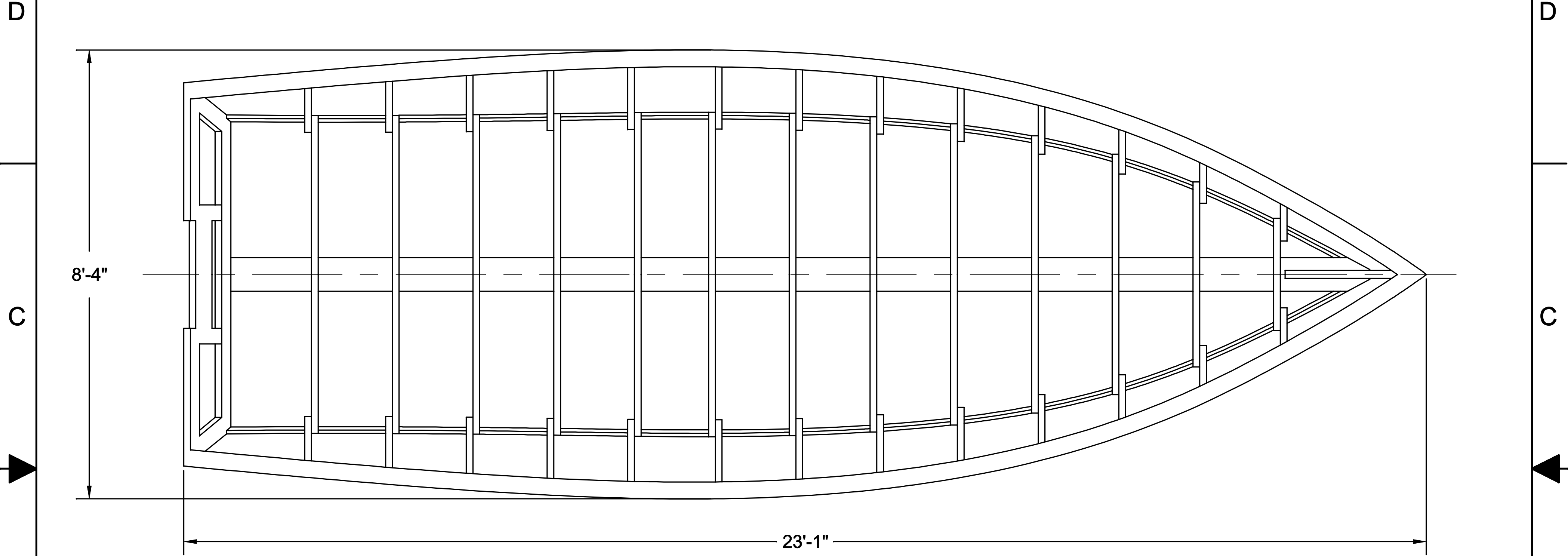
3

2

1

NOTICE
 THIS DRAWING CONTAINS A PROPRIETARY DESIGN ASSIGNED TO SPIRA INTERNATIONAL, INC. ALL RIGHTS TO DUPLICATE, TRANSFER OR SELL THIS DESIGN ARE EXPRESSLY RESERVED. THE BUYER IS LICENSED TO BUILD ONE ASSEMBLY FROM THESE PLANS.

REVISIONS				
ZONE	LTR	DESCRIPTION	DATE	APPROVED



Spira International, Inc.
Huntington Beach, California

WINCHESTER
23' PACIFIC POWER DORY

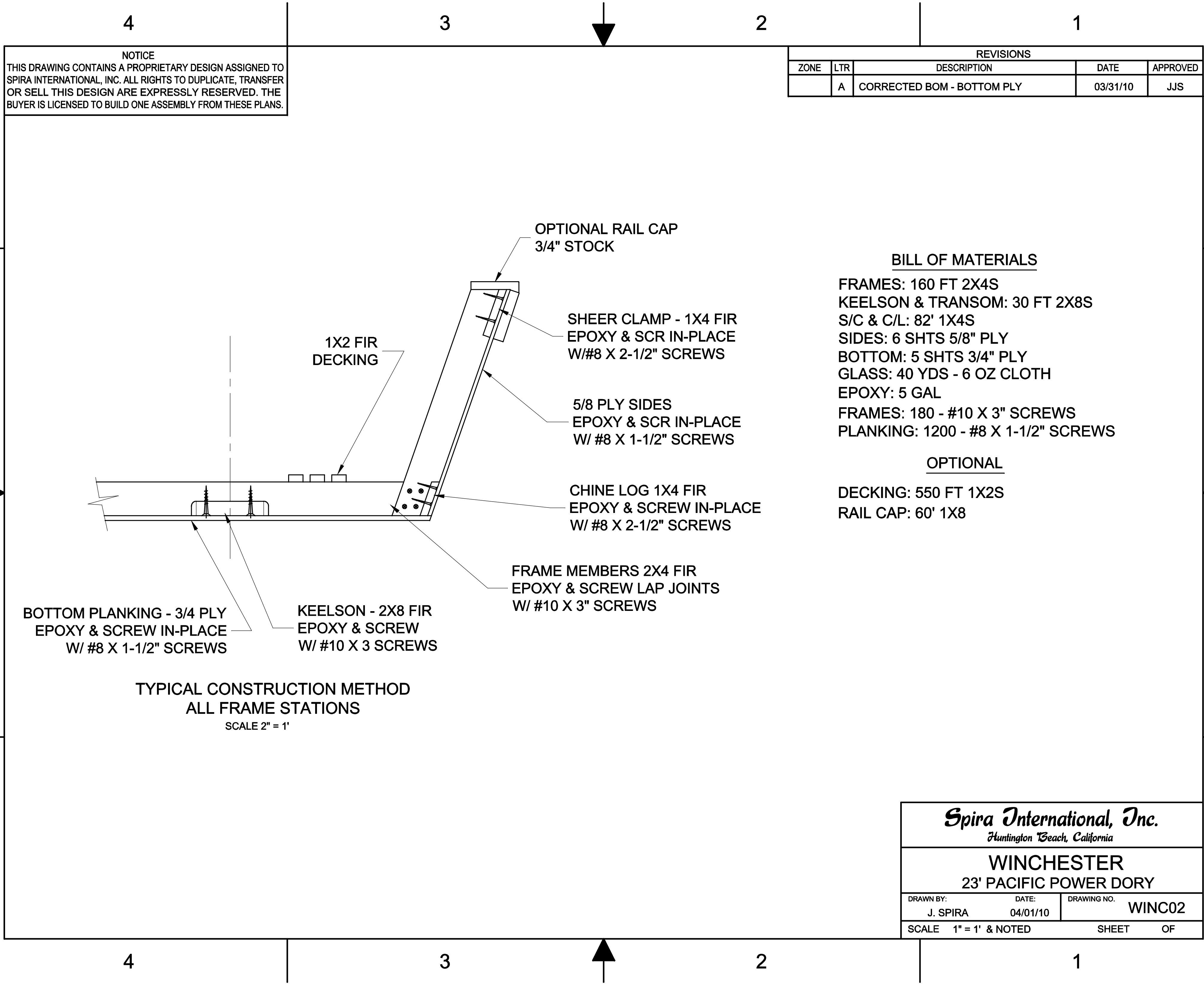
DRAWN BY: J. SPIRA	DATE: 04/01/10	DRAWING NO. WINC01
SCALE 3/4" = 1'		SHEET OF

4

3

2

1



NOTICE
 THIS DRAWING CONTAINS A PROPRIETARY DESIGN ASSIGNED TO SPIRA INTERNATIONAL, INC. ALL RIGHTS TO DUPLICATE, TRANSFER OR SELL THIS DESIGN ARE EXPRESSLY RESERVED. THE BUYER IS LICENSED TO BUILD ONE ASSEMBLY FROM THESE PLANS.

REVISIONS				
ZONE	LTR	DESCRIPTION	DATE	APPROVED
	A	CORRECTED BOM - BOTTOM PLY	03/31/10	JJS

BILL OF MATERIALS

- FRAMES: 160 FT 2X4S
- KEELSON & TRANSOM: 30 FT 2X8S
- S/C & C/L: 82' 1X4S
- SIDES: 6 SHTS 5/8" PLY
- BOTTOM: 5 SHTS 3/4" PLY
- GLASS: 40 YDS - 6 OZ CLOTH
- EPOXY: 5 GAL
- FRAMES: 180 - #10 X 3" SCREWS
- PLANKING: 1200 - #8 X 1-1/2" SCREWS

OPTIONAL

- DECKING: 550 FT 1X2S
- RAIL CAP: 60' 1X8

TYPICAL CONSTRUCTION METHOD
ALL FRAME STATIONS
 SCALE 2" = 1'

Spira International, Inc.
Huntington Beach, California

WINCHESTER
23' PACIFIC POWER DORY

DRAWN BY: J. SPIRA	DATE: 04/01/10	DRAWING NO. WINC02
SCALE 1" = 1' & NOTED		SHEET OF