

4

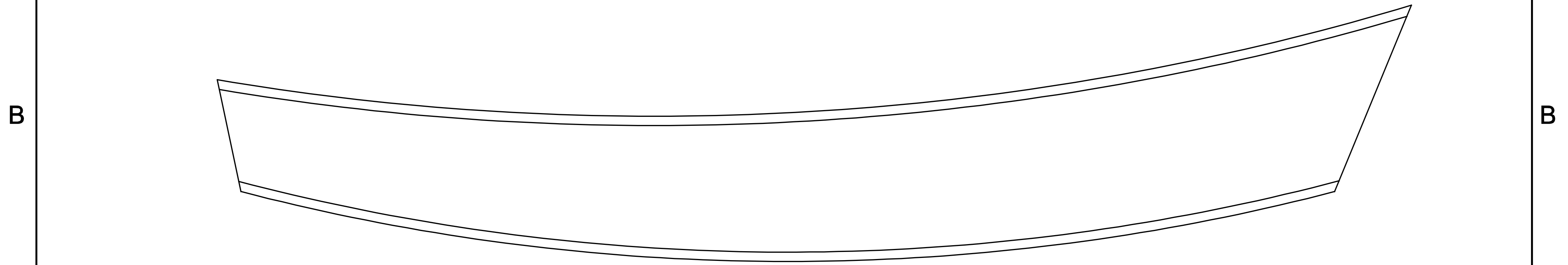
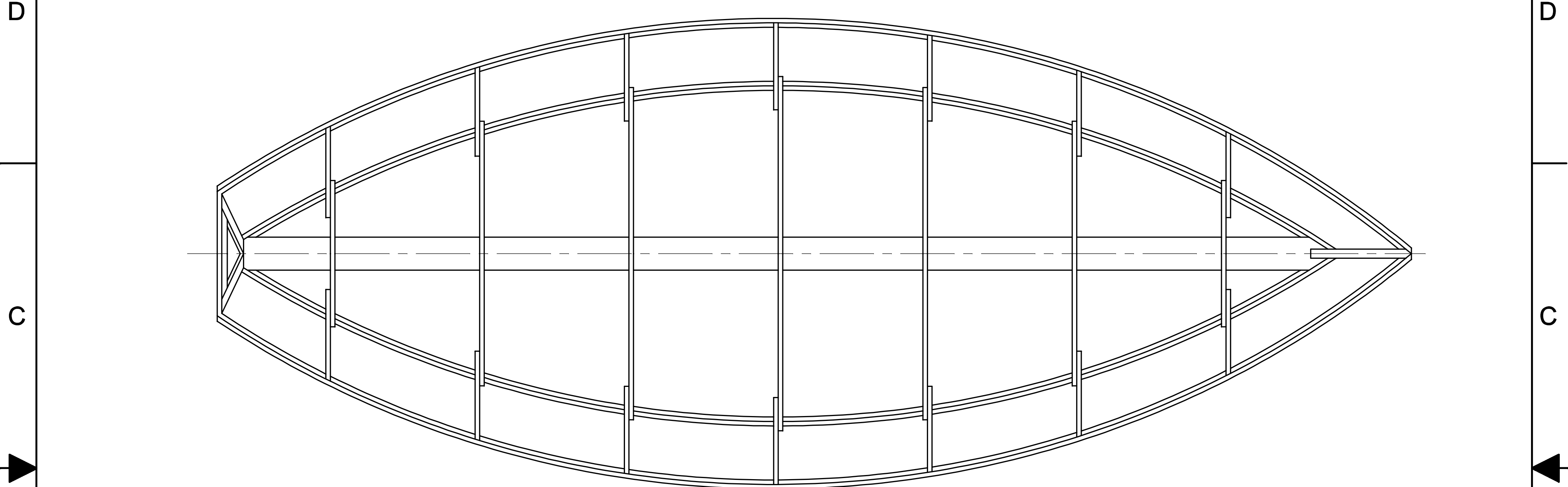
3

2

1

NOTICE
 THIS DRAWING CONTAINS A PROPRIETARY DESIGN ASSIGNED TO SPIRA INTERNATIONAL, INC. ALL RIGHTS TO DUPLICATE, TRANSFER OR SELL THIS DESIGN ARE EXPRESSLY RESERVED. THE BUYER IS LICENSED TO BUILD ONE ASSEMBLY FROM THESE PLANS.

REVISIONS				
ZONE	LTR	DESCRIPTION	DATE	APPROVED



SPECIFICATIONS	
LENGTH	4.9 M
BEAM	2.0 M
HEIGHT	0.9 M
DRAFT	10 CM
WEIGHT	82 KG

Spira International, Inc.
Huntington Beach, California

YUKON
 4.9 M DRIFT BOAT

DRAWN BY: J. SPIRA	DATE: 08/06/10	DRAWING NO. YUKOM01
SCALE 1 / 12		SHEET OF

4

3

2

1

A

A

B

B

C

C

D

D

4

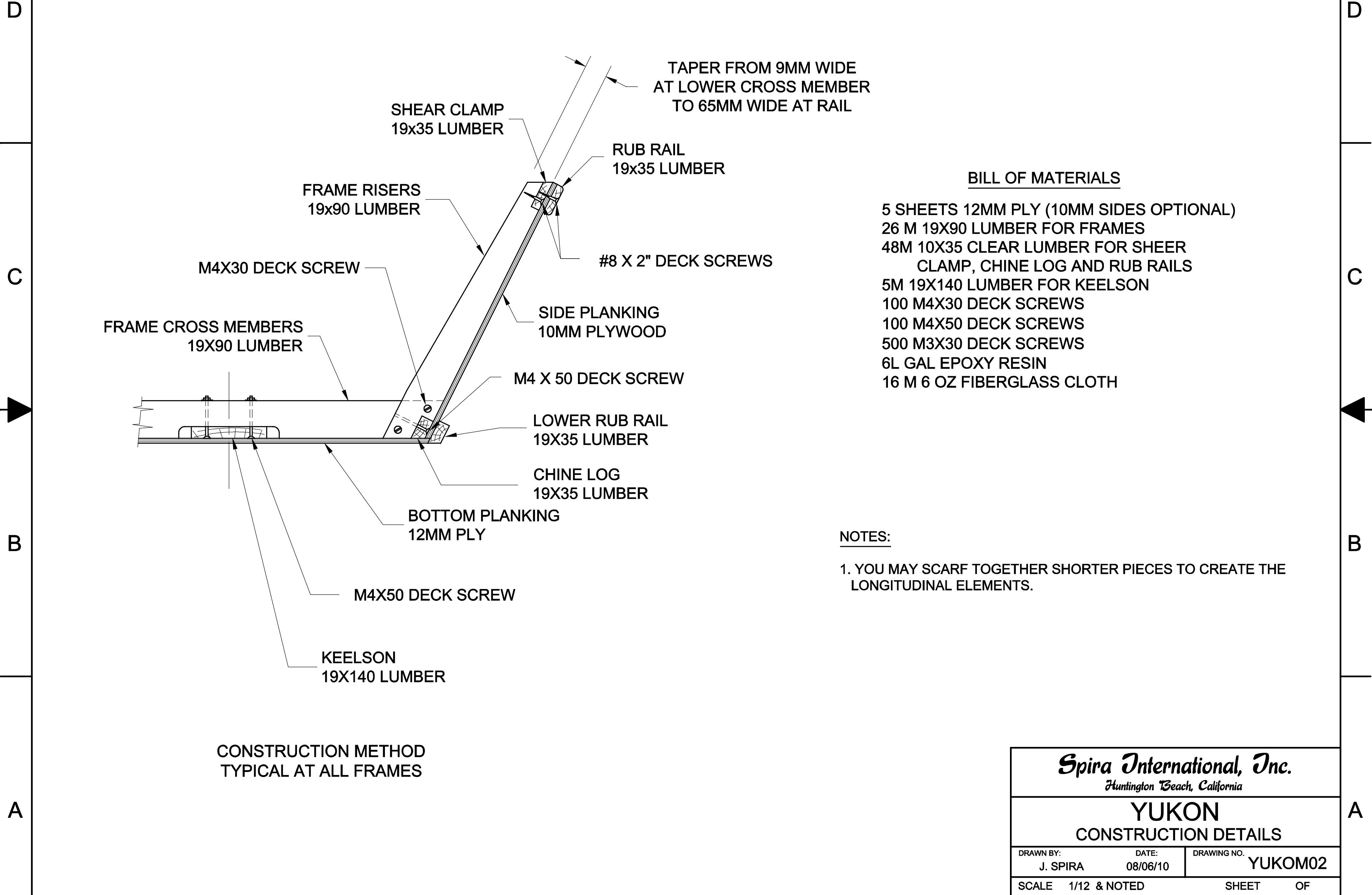
3

2

1

NOTICE
 THIS DRAWING CONTAINS A PROPRIETARY DESIGN ASSIGNED TO SPIRA INTERNATIONAL, INC. ALL RIGHTS TO DUPLICATE, TRANSFER OR SELL THIS DESIGN ARE EXPRESSLY RESERVED. THE BUYER IS LICENSED TO BUILD ONE ASSEMBLY FROM THESE PLANS.

REVISIONS				
ZONE	LTR	DESCRIPTION	DATE	APPROVED



TAPER FROM 9MM WIDE
 AT LOWER CROSS MEMBER
 TO 65MM WIDE AT RAIL

BILL OF MATERIALS

- 5 SHEETS 12MM PLY (10MM SIDES OPTIONAL)
- 26 M 19X90 LUMBER FOR FRAMES
- 48M 10X35 CLEAR LUMBER FOR SHEER CLAMP, CHINE LOG AND RUB RAILS
- 5M 19X140 LUMBER FOR KEELSON
- 100 M4X30 DECK SCREWS
- 100 M4X50 DECK SCREWS
- 500 M3X30 DECK SCREWS
- 6L GAL EPOXY RESIN
- 16 M 6 OZ FIBERGLASS CLOTH

NOTES:

- 1. YOU MAY SCARF TOGETHER SHORTER PIECES TO CREATE THE LONGITUDINAL ELEMENTS.

CONSTRUCTION METHOD
 TYPICAL AT ALL FRAMES

Spira International, Inc.
Huntington Beach, California

YUKON
 CONSTRUCTION DETAILS

DRAWN BY: J. SPIRA	DATE: 08/06/10	DRAWING NO. YUKOM02
SCALE 1/12 & NOTED		SHEET OF

4

3

2

1