

4

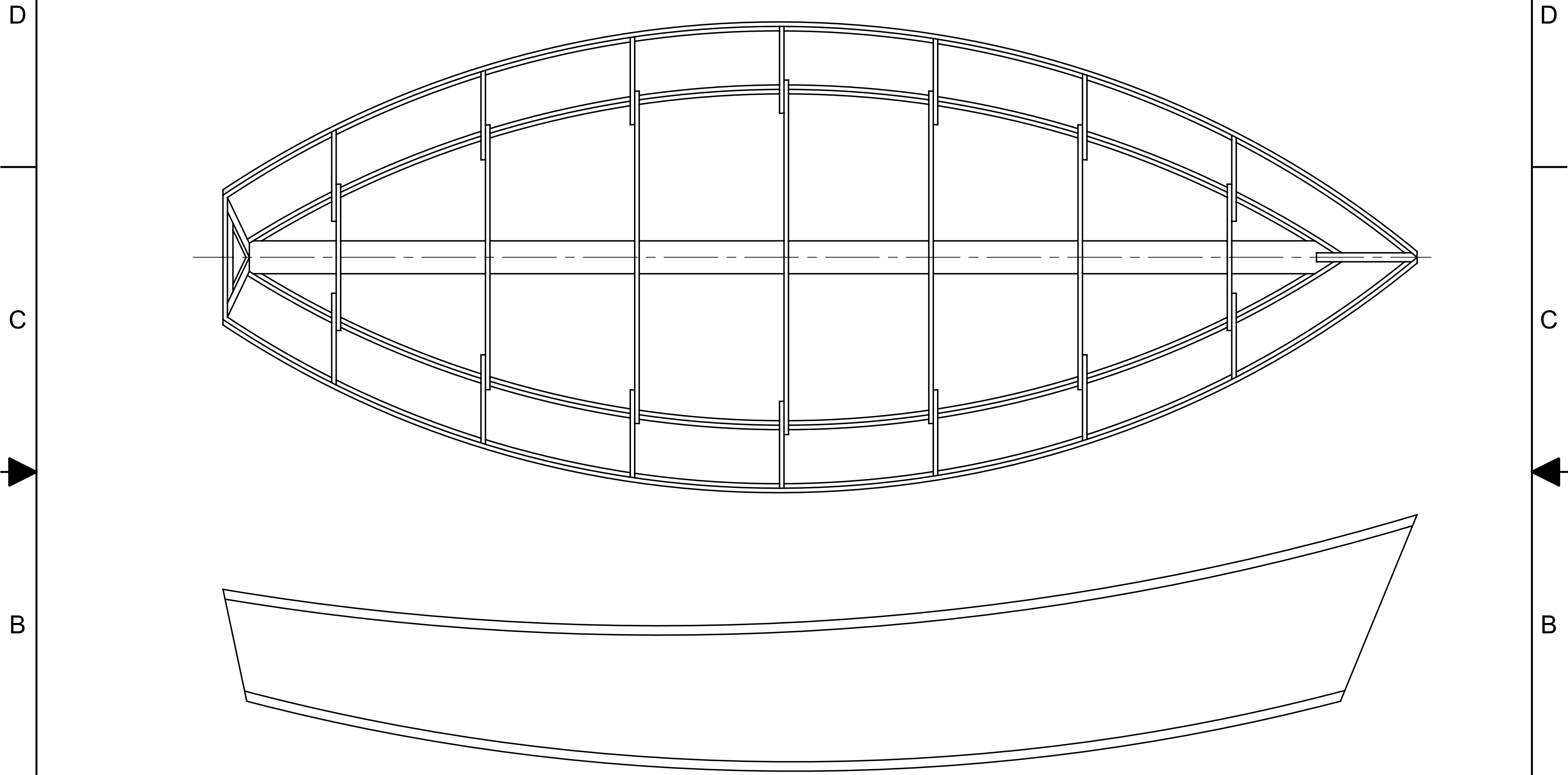
3

2

1

NOTICE
 THIS DRAWING CONTAINS A PROPRIETARY DESIGN ASSIGNED TO SPIRA INTERNATIONAL, INC. ALL RIGHTS TO DUPLICATE, TRANSFER OR USE ARE EXPRESSLY RESERVED BY SPIRA INTERNATIONAL. THE BUYER IS LICENSED TO BUILD ONE ASSEMBLY FROM THESE PLANS.

| REVISIONS | | | | |
|-----------|-----|------------------|----------|----------|
| ZONE | LTR | DESCRIPTION | DATE | APPROVED |
| | B | CORRECTED WEIGHT | 08/06/10 | JJS |



| SPECIFICATIONS | |
|----------------|---------|
| LENGTH | 16' 0" |
| BEAM | 6' 6" |
| HEIGHT | 2' 10" |
| DRAFT | 0' 4" |
| WEIGHT | 180 LBS |

| | | |
|--|-------------------|-----------------------|
|  Spira International, Inc. Huntington Beach, California | | |
| YUKON 16' DRIFT BOAT | | |
| DRAWN BY: J. SPIRA | DATE: 12/04/00 | DRAWING NO. YUKO01 |
| SCALE 1" = 1' | | SHEET OF |

4

3

2

1

A

A

B

B

C

C

D

D

4

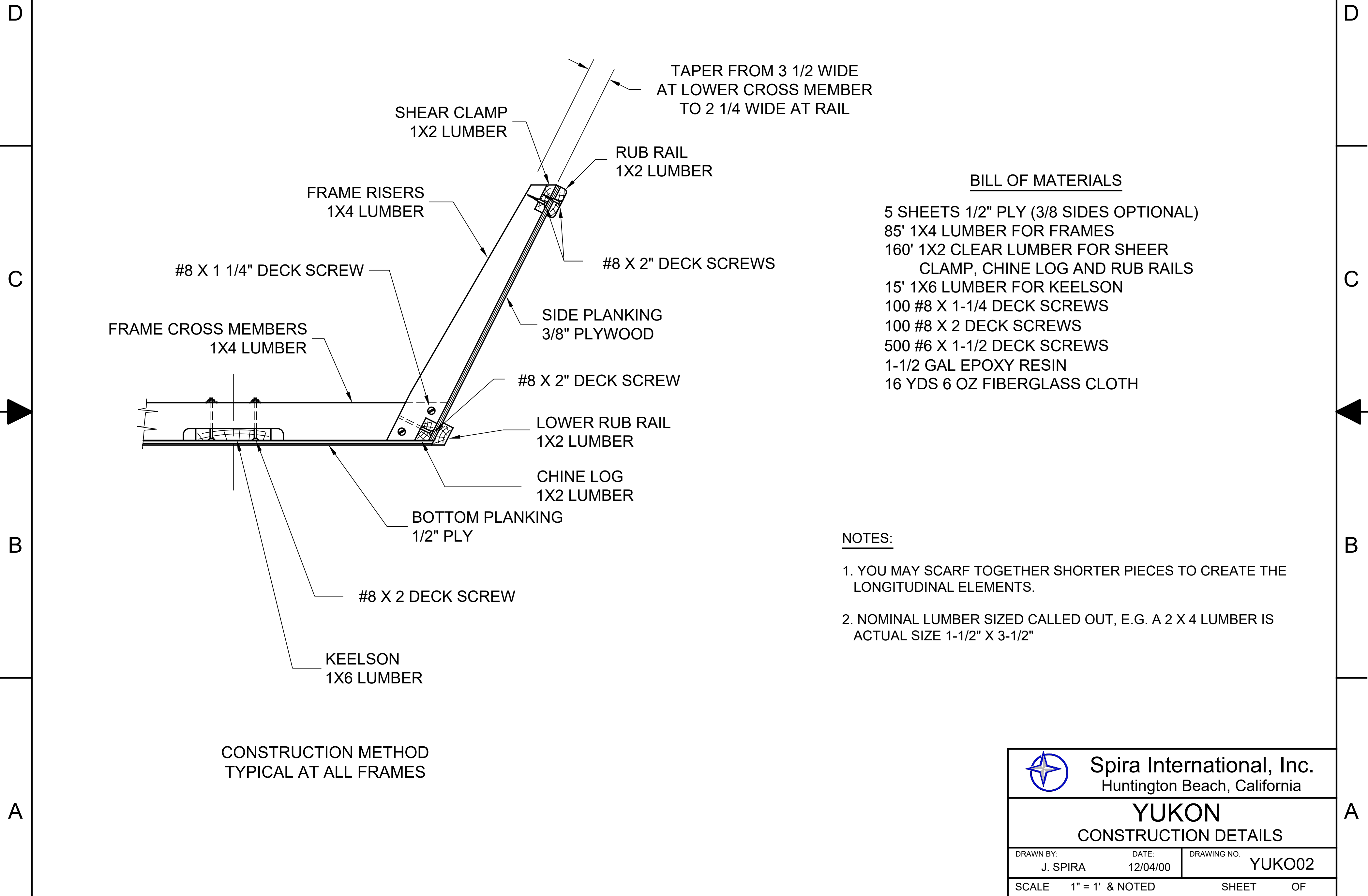
3

2

1

NOTICE
 THIS DRAWING CONTAINS A PROPRIETARY DESIGN ASSIGNED TO SPIRA INTERNATIONAL, INC. ALL RIGHTS TO DUPLICATE, TRANSFER OR USE ARE EXPRESSLY RESERVED BY SPIRA INTERNATIONAL. THE BUYER IS LICENSED TO BUILD ONE ASSEMBLY FROM THESE PLANS.

| REVISIONS | | | | |
|-----------|-----|-------------------------------|----------|----------|
| ZONE | LTR | DESCRIPTION | DATE | APPROVED |
| | A | ADDED BOM - UPDATED MATERIALS | 08/06/10 | JJS |



TAPER FROM 3 1/2 WIDE AT LOWER CROSS MEMBER TO 2 1/4 WIDE AT RAIL


BILL OF MATERIALS

- 5 SHEETS 1/2" PLY (3/8 SIDES OPTIONAL)
- 85' 1X4 LUMBER FOR FRAMES
- 160' 1X2 CLEAR LUMBER FOR SHEER CLAMP, CHINE LOG AND RUB RAILS
- 15' 1X6 LUMBER FOR KEELSON
- 100 #8 X 1-1/4 DECK SCREWS
- 100 #8 X 2 DECK SCREWS
- 500 #6 X 1-1/2 DECK SCREWS
- 1-1/2 GAL EPOXY RESIN
- 16 YDS 6 OZ FIBERGLASS CLOTH

NOTES:

1. YOU MAY SCARF TOGETHER SHORTER PIECES TO CREATE THE LONGITUDINAL ELEMENTS.
2. NOMINAL LUMBER SIZED CALLED OUT, E.G. A 2 X 4 LUMBER IS ACTUAL SIZE 1-1/2" X 3-1/2"

CONSTRUCTION METHOD
 TYPICAL AT ALL FRAMES

| | | |
|--|-------------------|-----------------------|
|  Spira International, Inc. Huntington Beach, California | | |
| YUKON CONSTRUCTION DETAILS | | |
| DRAWN BY: J. SPIRA | DATE: 12/04/00 | DRAWING NO. YUKO02 |
| SCALE 1" = 1' & NOTED | | SHEET OF |

4

3

2

1